

# Belleville Times

Serving Belleville Since 1909

35¢

79th Year No. 7

An Orechio Publication

Thursday, January 21, 1988

Officials see

## 100 pt. tax hike for town

A whopping tax hike of at least 100 tax points is foreseen by township officials thanks to salary hikes within the school system and the burden of transporting Essex garbage to out of state landfills.

Board of Education trustees discussed a "built-in" 33 point tax hike directly linked to increases in salary contracts for school system employees. The tentative 1988 school budget, on its way to the county superintendent following its approval at the January 18 school board meet, reportedly amounts to a 40-50 point overall increase.

"This is tentative," School Business Administrator Leonard DiGiovanni told the Times. "We still don't know how much the state is going to give us." He said that in past years, Belleville and all New Jersey municipalities have not received 100% of the state subsidies it is eligible for. Should the state fully fund its educational commitment, some painful points could be cut.

"We're looking at a 40 point tax increase for garbage alone," Commissioner of Public Affairs Joseph Fornarotto stated. Garbage removal costs fall under Fornarotto's departmental budget, and the prospect of mammoth increases in garbage removal costs makes him fume.

He noted that Belleville, in addition to paying an estimated four times as much for garbage removal in 1988, will also have to pay for emergency payments authorized in 1987. Thus, the price for shipping our trash west - instead of across the Passaic River - will cost somewhat less in 1989 and beyond, but not by much.

Belleville's tax rate was \$6.87 per \$100 of assessed valuation in 1987. For 1986, the figure was \$6.01.

"We're going to definitely be in the area of \$8.00 per \$100 for 1988," Commissioner Vincent Frantantoni said. He noted that his own departmental budget would be about \$10,000 less than the \$996,000 1987 Parks & Public Property allotment. He said he was returning a \$70,000 surplus to the town coffers.

"But the school budget and the garbage is going to hurt us," he said.

Other town officials said a hike in the Essex tax is looming, the third in a trio of taxes on town property - municipal, school and county.

Said one official: "Figuring 40 points for garbage and 40 points for the schools, we need only a 20 point hike to go over a hundred. So I'd say 100 points is a conservative estimate."

At \$8.00 per \$100, a homeowner assessed at \$60,000 would have to pay about \$4,800 in total annual tax.

One citizen, speaking at the school board meeting said, "If this keeps up you're going to have a tax revolt! Other homeowners said they were considering selling their homes and moving to new communities."

However, one town employee said the town tax rate was in the same ballpark as surrounding towns. Others said "All the towns are getting hit with big tax hikes. It's not just Belleville's problem."

As the proposed municipal, county and school budgets become public, a more exact point increase will be reported in the Belleville Times. But for now, many township school and municipal officials agree, there's a 100 point tax hike in the wings for 1988.

Christopher Bifani

Ready to roll...



Commissioner Angelo Risoli and Deputy Commissioner Chester Green inspect Belleville's new street sweeper. (Photo by Christopher Bifani)

By Christopher Bifani

After a year of citizens' complaints over inadequate street cleaning, the Township of Belleville has finally received a new street sweeper. The machine is an ultra-modern Ravo 4000 model manufactured by Ravo International of Holland. It replaces two seventies-era Elgin street sweepers, both of which have been broken for months.

"We'll begin street cleaning operations as soon as the snow melts," Public Works Commissioner Angelo Risoli told the Times. The \$72,000 machine was delivered to the Public Works Garage last week. It's first official appearance was at the January 12 Belleville Commission meeting, when it was parked outside the High School meeting site for inspection by townspeople.

Last year, Commissioner Risoli gave the Ravo a test-run in Belleville before deciding to buy.

"It was very impressive," Risoli recalled. "The Ravo swept the entire neighborhood around Smallwood Avenue in two hours."

Belleville's newest piece of grime-fighting equipment was financed by a \$41,000 Safe And Clean Neighborhood grant. The remaining \$31,000 was bonded by Belleville to be paid out over time.

Public Works Deputy Commissioner Chester Green said the Ravo sports an option which can "remove leaves and debris out of storm sewers."



Dashboard of RAVO 4000

The Ravo, with an attached flexible tube, acts as a giant vacuum.

Unlike its Elgin predecessors, the Ravo has a built-in trash compactor.

"With the old machines," said

Green, "we used to have unload four times a day. The Ravo only has to be unloaded once a day because there is more storage space and the benefit of the compactor."

Risoli noted that the compacting feature may save more than a manhour per day.

Other features of the Ravo include its slimmer, more compact design. Risoli said, "It's

speed is between three and four miles per hour.

More power

Although the Ravo is much smaller than the domestically-built Elgins, Commissioner Risoli says it is more powerful. He adds that the machine is faster, too.

"I estimate that the Ravo can perform 50% more work than one of the old machines in the same amount of time," he said. However, even with the extra performance, there may be a problem with meeting Belleville's street sweeping schedule, which is defined via the parking restriction signs throughout town.

"That sweeping schedule is based on two functioning street sweepers," Risoli explained, "and although we know the Ravo is faster than the previous machines, we don't know yet if it's as fast as two of the previous machines."

Risoli said he would sit down and discuss the scheduling situation with Public Safety Department officials after he evaluates

(continued on page 3)

In 3-2 split vote

## Commission scraps plan for police headquarters

In a split vote, the Belleville Commission has decided to scrap its controversial \$5 million public safety building plan in favor of pursuing alternative solutions to the problem of cramped police headquarters.

Commissioners Joseph Fornarotto, Vincent Frantantoni and Angelo Risoli voted against continuing with the plan. Mayor Michael Pizzi and Commissioner Joseph McGreevey voted in favor of it.

The votes were cast at a special meeting of the Belleville Commission held Tuesday, January 19 in Town Hall. The meeting was filled to capacity with townspeople who applauded the voting results loudly.

Belleville, which has already paid out \$750,000 in architectural, engineering and other costs, now faces additional claims from the two major firms involved in the costly plans.

Neil Siciliano, the township's representative during the design phase of the project, and Beckhard-Richlan Associates of Manhattan, the township's architectural firm, apparently have clauses in their contracts which provide handsomely for early termination.

Town officials say further charges to Belleville could be in the area of \$50,000 from Beckhard-Richlan and \$7,000 from Siciliano. If these charges are paid, Belleville will close the current volume of the municipal construction saga at slightly more than \$800,000 - or eight tenths of the \$1 million which was budgeted for non-construction purposes.

"We might be up for some legal action," Mayor Michael Pizzi told the Times. "We essentially forfeited our part of the deal." He said he would be meeting with the architects and with Siciliano to discuss the matter in coming days.

The Mayor expressed regret over the outcome of the vote.

"How do you think I feel?" His honor exclaimed when asked of his feelings on the vote. Pushed to elaborate he added:

"I'm disappointed. I think I made myself clear when I said we acted irresponsibly."

But Pizzi is not giving up on his dream of providing expanded and more efficient headquarters for the department he heads in his administrative role as Director of Public Safety.

"It's a matter of us getting back together and seeing what we can do."

Of the three commissioners who (continued on page 14)

## Two seats open in 1988 school board race

By Christopher Bifani

The Belleville school administration is gearing up for another school board and budget election, set for April 5. Polling booths will be set up at schools throughout town and at the Board of Education office on Cortlandt Street.

"Two incumbent board of education seats are up for election," stated Business Administrator Leonard DiGiovanni.

Those seats are presently occupied by Ernest Zoppi and Stephen Caputo.

DiGiovanni announced that residents of Belleville may file their petitions to run for a board seat no later than 4PM on February 11.

In addition to being a town resident for at least one year, he said, candidates must be United States citizens and be over the age of 18.

Other qualifications include the ability to read and write and candidates must not be "directly or indirectly interested in any contract with or claim against the board."

Also up for vote is the 1988-89 Belleville school budget which is currently in preparation for presentation to the Essex County Superintendent of Schools. After the

budget is reviewed by the superintendent, it is scheduled to be the topic of a public hearing set for March.

In recent years the school budget has been handily defeated at the polls. If it is defeated this year, the budget goes to the Belleville Commission for cost-cutting recommendations.

### Seven year veteran of Public Works department

## Green named deputy commissioner

Public Works Commissioner Angelo Risoli has named Chester Green of Cedar Hill Avenue as his deputy commissioner.

"Chester Green is a qualified and dedicated town employee," Risoli told the Times. Green, who has resided in Belleville for ten years, is a seven year veteran of the DPW.

"There is a lot of responsibility being a deputy to Commissioner Risoli," Green stated following his selection. "A commissioner is a part-time job in this town and as the deputy commissioner it's my job to implement and follow up on the different programs the director sets forth."

Within the department, Com-

mentations. From there, the school board may choose to appeal the budget at the state level. This procedure occurred with the current school budget (about \$18 million, \$11 million of which was raised through the local tax levy) and resulted in a restoration of \$95,000 in Commission cuts.

If the school budget passes, it goes directly to the state for final approval.

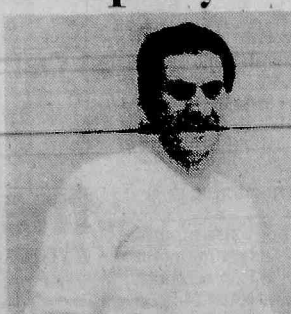
Potential candidates may pick up nominating petitions and make inquiries at the Board of Education office, 190 Cortlandt Street between the hours of 8AM and 4PM. Phone number is 450-3500.

Challenging position

Green finds his new position challenging.

"It's a very interesting job and in the very near future I plan to attend night school to learn about budget preparation and getting state funding," Green said.

Green added that team spirit would be a key factor in his administration. (continued on page 2)



Chester Green

missioner Risoli is referred to as the director of public works.

Green began his public works career in 1980 as a laborer. In 1982 he was promoted to driver and was

### The Belleville Times

20 pages in two sections

Contents:

Section I

Belleville briefly	2
Editorial	4
Flight 890	5
From the Editor's Desk	6
Bookmarks	6
Medically Speaking	6
Obituaries	7
Social News	9
Events in the Area	9

Section II

Sports	11-13
Recreation Roundup	11
Religious Viewpoints	13
Seems like Yesterday	13
Classified	15-17
Real Estate	18-19

MCMLXXXVIII



## BELLEVILLE briefly...

### Steve King completes Navy recruit training

Navy Seaman Recruit Steven J. King, son of Nick Ricca of Prospect Place, has completed recruit training at Recruit Training Command, San Diego.

During King's eight-week training cycle, he studied general military subjects designed to prepare him for further academic and on-the-job training in one of the Navy's 85 basic fields.

King's studies included seamanship, close order drill, Naval history and first aid. Personnel who complete this course of instruction are eligible for three hours of college credit in Physical Education and Hygiene.

A 1987 graduate of Belleville High School, he joined the Navy in August 1987.

"Where Quality Coverage Counts"

#### Troise Insurance Agency

We can make you a "sweetheart of a deal" IF YOU QUALIFY. Ask about Rutgers Casualty Insurance

Call or stop by for a free quote today!

172 Washington Ave., Belleville • 759-4100

Auto • Truck • Commercial • Home • Tenant • Life  
Member of the Belleville Chamber of Commerce



Dan Murphy makes top 20

### Marketing students compete in Bergen

On Wednesday, January 6, eighteen members of the Belleville High School Retailing/Merchandising and Marketing classes journeyed to Bergen Community College with their advisors Mr. Ralph LaConte and assisted by Ms. Constance Gonnella to compete in the Northern Regional D.E.C.A. Conference.

Daniel Murphy placed in the top 20 in the Entrepreneurship event



Ralph LaConte, Raquel Bonasissa and Daniel Murphy and Raquel Bonasissa placed in the top 40 in General Marketing. Both are seniors.

"We wish to extend our congratulations to these students who competed against 1500 other students and represented Belleville High School so well," said Mr. Musmanno, Business Supervisor.

These regional winners now qualify for State competition to be held at Great Gorge on February 29 and March 1st and 2nd.



Stephen J. Mango

### Mango named manager at Mutual Benefit Life

Stephen J. Mango of Belleville was recently promoted to Purchasing Manager of The Mutual Benefit Life Insurance Company in Newark.

In his new position, Mr. Mango will direct all purchasing activities for the Eastern Home Office of Mutual Benefit, as well as manage the Company's Forms Services Operations.

A Cum Laude graduate of Seton Hall University, Mr. Mango joined the company in 1975 as a buyer in the Purchasing Department. He most recently served as a staff associate, Purchasing.

Mr. Mango lives in Belleville with his wife Diana, and is an executive volunteer for the Greater

Newark Chamber of Commerce.

Founded in 1845 Mutual Benefit is the nation's 15th largest life insurance company. With some \$9 billion in assets, The Mutual Benefit Companies offer a full line of financial products and services to individuals, affiliated groups and businesses, ranging from individual life insurance and tax-advantaged investment opportunities to corporate pension plans, group life and health coverage, and asset management services.

Headquartered in Newark, The Mutual Benefit Companies maintain home offices in Kansas City, MO, and Providence, RI, and has affiliated offices and agencies throughout the United States.

Kim Fraone takes first

### Belleville Optimists host freedom essay

The Optimist Club of Belleville recently sponsored an essay contest on the subject of "Freedom, Our Most Precious Heritage."

Tom Spillane, Club Chairman, reported that he received "38 excellent essays from the students at Belleville High School."

Kimberly Fraone has placed first in the club's competition, accord-

ing to Emil Nardachone, Club President.

The winning entry will now be submitted to the Optimist district competition for judging against other Optimist club winners from throughout New Jersey. The winner of the district competition will be awarded an expense paid trip to the Freedoms Foundation at Valley Forge for a four day seminar on freedom and patriotism, funded by the Optimist International Foundation.

Taking second place in the competition was Diane DiVincenzo, with a third place being awarded to Stacy Johansen.

All of the winners will be honored at a latter date by the Optimist Club of Belleville.

### New DPW deputy

(continued from page 1)  
istration of Commissioner Risoli's department.

"We are a team in this department," he noted, "and I intend to work hand in hand with Public Works Superintendent Jim Saldo and his assistant superintendent Jack Gilbert."

Chester Green is married to the former Maria Adamo, a life-long resident of Belleville. They have two children, James, 8, attending School 8 and Danielle, 4.

"My goal is the betterment of public works services for the townspeople," Green said.

**NESSIE'S  
DELI**  
444 Washington Ave.  
Belleville, N.J.  
751-6780  
FREE DELIVERY  
SUBS - HOT FOODS  
CATERING  
50¢ OFF  
ANY SUB  
w/THIS COUPON

**Pharmacy  
Footnotes**  
  
Vincent  
Cozzarelli  
Reg. Ph.

#### A WEIGHTY MATTER

How much medicine a person takes is directly related to his size and age. The dosage for an adult is calculated to act on a body weighing approximately 155 pounds. Therefore, adults who weigh only 100 pounds should take their petite size into account when taking medicine. This means, in this case, reducing the dosage of an over-the-counter medicine by about one-third. If the medicine to be ingested is prescribed by a doctor, he should take his patient's weight into account. As for children, those of average size between the ages of 5 and 12 can be expected to take approximately one-third of an adult dosage of over-the-counter medicine. A person over the age of 65 should also adjust his dosage, based on the recommendation of the pharmacist or his doctor.

Any questions you may have on dosage of a medication can be answered by our pharmacist at ROSSMORE PHARMACY, 338 Washington Ave., 759-1968, 159-1956. We are Medicare and Blue Cross approved. Greeting cards, Russell Stover candies, cosmetics and toiletries are stocked. Open: 9 a.m. - 10 p.m. daily, 9 a.m. - 9 p.m. Sundays.

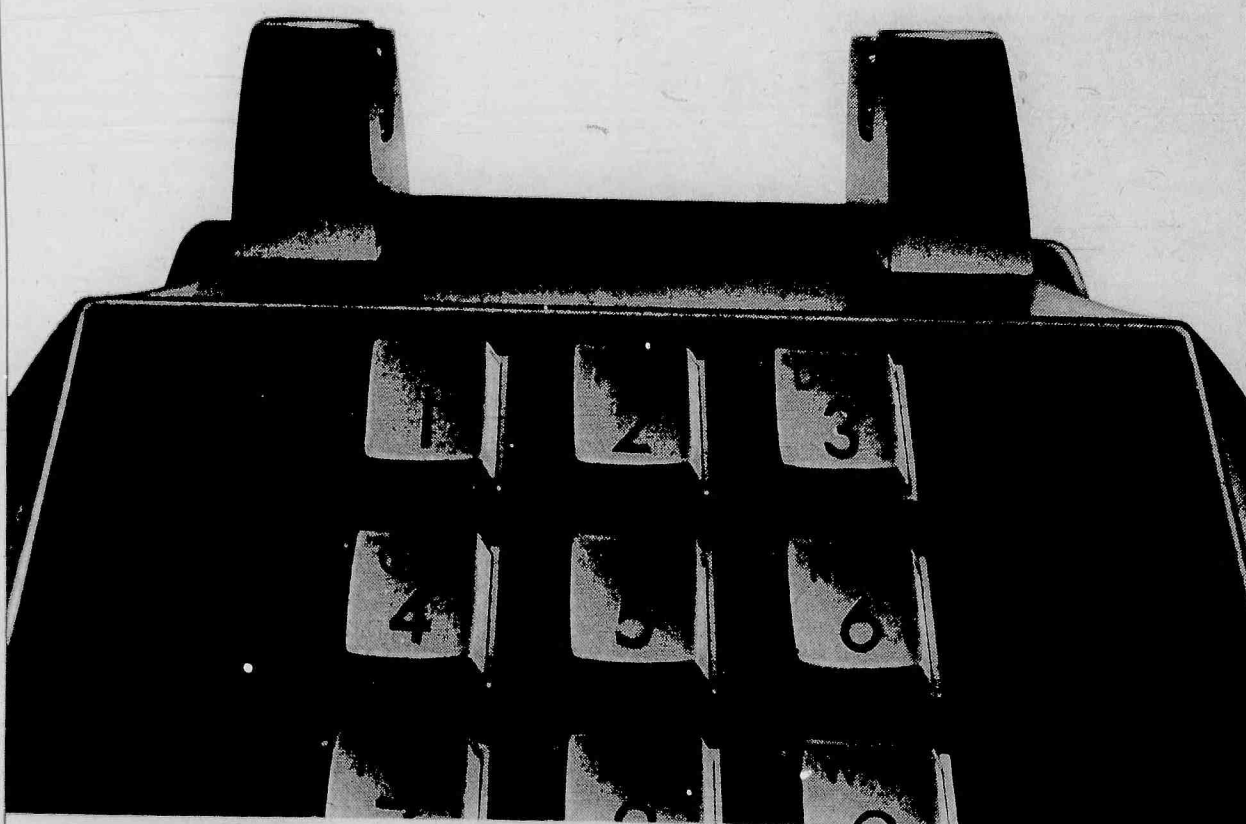
#### HANDY HINT:

Any drug that affects the central nervous system should not be given to a child without doctor's consent.

**Ritacco Bros.  
Pizzeria**  
\$1.00 off  
Any Pizza  
(pick-up only) (w/coupon)  
18 Washington Ave.  
Nutley  
667-9600

**NOW OPEN**  
  
"The Ultimate in  
Floral Expressions"  
Est. Mar. 1980  
759-6677  
100 Belleville Ave.  
Belleville, N.J. 07109

### How to make banking an uplifting experience.



Now all you need is a phone to do your banking at the Howard — including opening a new account, transferring funds between accounts, even applying for a loan.

Just pick up the phone, any phone, anywhere. And you can accomplish just about any banking business you now do in person. Faster and easier. And at your convenience — since all you have to do is get to a phone, instead of getting to the bank.

With our Customer Service Center toll-free number, you'll get professional, courteous, and speedy phone service. And there's no charge for the call. Or the services, including:

- Opening a new account.
- Applying for a personal, home equity (HERO), or auto loan.
- Immediate transfer of funds between your Howard accounts. (Which are confirmed with a receipt mailed to you within 10 days of your call.)
- Latest readings on investment, mortgage, and loan rates.
- Stopping payments on a Howard check, making address changes, and getting information about the status of your loan, accounts, and locations of our Howard MAC® 24-hour banking machines.

All of which make for a rather wonderful way to go about your banking. And get on with the rest of your life.

Call 1-800-4-HOWARD

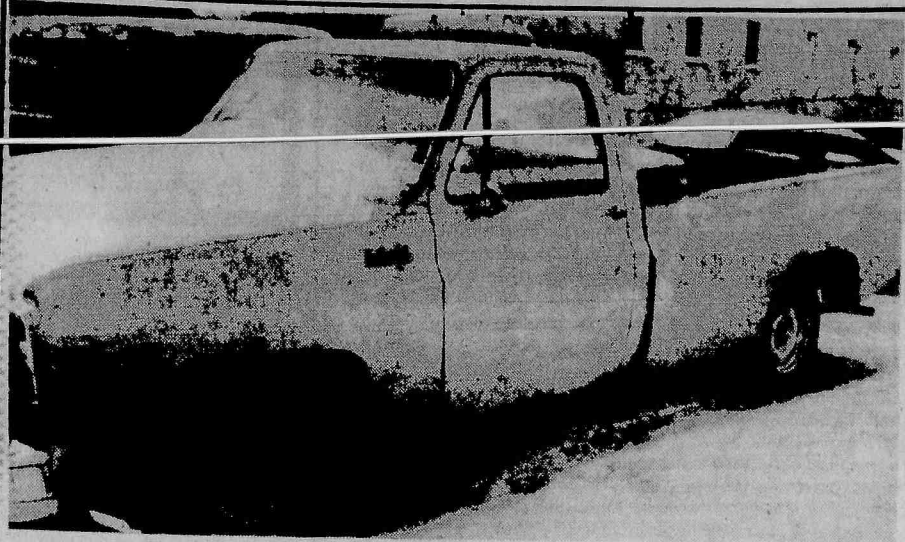
(1-800-446-9273)

Monday through Friday, 8 a.m. to 6 p.m.  
Saturday, 9 a.m. to 1 p.m.

**the Howard**  
It's Great to be Howard Powered.  
Member FDIC Equal Opportunity Lender

Serving you locally at 375 Franklin Avenue, Nutley.





## Out with the old, in with the new...

Public Works Commissioner Angelo Risoli says cost-cutting in the first six months of his term left him with enough surplus cash to retire the rotting, beat-up utility pick-up (above) with a brand new \$10,000 beauty (below). The new Dodge truck is already hard at work. (Photo by Christopher Bifani)



# A clean-sweep for Belleville

(continued from page 1)

the Ravo's performance when the weather breaks.

"We may have to get another sweeper eventually to meet the restricted parking schedule," Deputy Commissioner Green added. If a second Ravo were purchased, it would cost several thousand dollars less than the first one, since there would be no need to equip it with a storm sewer vacuum.

Further, say both DPW officials, there will be little or no time left for Belleville to utilize the sewer vacuum since one Ravo would have to be continuously deployed in its primary function of sweeping streets.

### No back-up

Until both Elgins broke down one after the other, the township had two operating street sweepers. During the periods of frequent breakdowns, there would still be an operating machine.

Although DPW officials are jubilant over the acquisition of the Ravo, should it break down the department would be back to square one.

"But, fortunately, we were

able to purchase the Ravo from Garden State Sweepers right over in Nutley," Commissioner Risoli said. "They promised that if there is any problem they'll come right down and take care of it."

The lengthy period which Belleville has endured without an operative street cleaner resulted in considerable outcry from townspeople.

Many times in recent months residents have spoken at town meetings and through letters to the Editor of the Belleville Times about the dirty curbs and streets in town.

Some township officials and citizens called for a return to

manual street-cleaning to get the town through its dirty interim.

Commissioner Risoli said he would have preferred to purchase a domestically produced street sweeper but said the Dutch model was a better value for the town. He explained that modern comparably-equipped American sweepers were slightly more expensive, but not as efficient.

"These are the machines Essex County is buying along with a large number of Essex municipalities," he said.

With a touch of pride the Commissioner added, "They're the best ones around."

**Welcome to the New CLIPPER** 748-4142

**30 Years of Serving You the Best • 71 Belleville Ave. Bloomfield, N.J.**

**Good Food • Courteous Service**

**Clean & Attractive Atmosphere**

Convenient Location Free Parking for 250 cars

Lunch • Dinner • Cocktails • Parties

Delivery & Catering

Call 748-4142 for Fast Take-out or Reservations

\* Sat. Hrs. • Live Entertainment with DANCE

Return this coupon for complimentary beverage w/dinner (Sat. 9 - 12 p.m.). Offer not valid with any other coupons.

## ARLINGTON JEWELERS

### SPECIAL SALES ITEMS \*

\*All items are 14K Gold — Quantities Limited.  
Prices subject to change due to fluctuating gold market.  
Not responsible for typographical errors.

Layaways Available

#### SPECIAL SALE ITEMS

Save 30% On Every Bulova, Pulsar & Caravel Watch In Stock  
Save 40% On Every Ladies' 14K Gold & Diamond Watch In Stock

	REG.	NOW
7" Solid Rope Bracelet	45.00	28.00
16" Solid Rope Necklace	88.00	52.99
18" Solid Rope Necklace	99.00	59.99
20" Solid Rope Necklace	106.00	63.99
Diamond Heart Initial Pendant	65.00	40.00
Ladies' Diamond Initial Bracelet	120.00	60.00
14K Gold & Diamond Medium Christ Head	109.00	65.00
14K Gold & Diamond Large Christ Head	140.00	84.00
Diamond Stud Earrings 1/4 Ct. T.W.	325.00	199.00
Diamond Stud Earrings 1/3 Ct. T.W.	430.00	275.00
Diamond Stud Earrings 1/2 Ct. T.W.	900.00	450.00

#### Diamond Studs, Pendants, Engagement Rings In All Sizes At Great Savings

Custom Made Name Necklace (Chain Inc.)	150.00	80.00
Diamond Name Necklace With Chain (Handmade)	825.00	475.00
Diamond Name Bracelet With Double Solid Rope	925.00	550.00
Ladies Diamond Initial Rings	99 to 400	50 to 200.00
Mothers Ring	150.00	99.00
Girl's Birthstone Ring	49.00	25.00
Mini Crucifix Ring	43.00	25.00
Ladies Crucifix Ring	65.00	40.00
Gents' Crucifix Ring	80.00	50.00
Small Diamond Cut Initial Ring	38.00	25.00
Large Ladies' Initial Ring	126.00	75.00

261 Franklin Ave. • Nutley • 661-1558

Open 10:30 a.m. - 6:00 p.m. Closed Tuesday



## For community service commitment

# Gabbai earns highest Rotary honor

The Rotary Club of Belleville recently celebrated the awarding of Rotary's highest award, The Paul Harris Fellowship to Club member, Rene Gabbai.

The award is presented by Rotary International, through local clubs to Rotarians who display a long term commitment to community service, fundraising for local national and international Rotary projects, and a sincere desire to improve the quality of life for one person or many.

### Gift of life organizer

Gabbai, a longtime Belleville resident, organized the Belleville Rotary Club's participation in "The Gift of Life Campaign," providing delicate heart surgery to poor children from third world countries. Also, he has given annual merit awards to Belleville High School students who show significant quality in their scholarly performance.

In the sixty five year history of the Belleville Rotary Club, only four local Rotarians have achieved the Paul Harris Fellowship. Mr. Gabbai said he was deeply moved by the honor and promises to continue the Belleville Club's mission of community service.



Pictured (L-R) Tom Devine, Club President, Marryann Gabbai, Rene Gabbai and Larry Gabbai celebrate the receipt of the Paul Harris Fellowship by Belleville Rotary Club member, Rene Gabbai.

## WINTER CLEARANCE SALE

Starting Jan. 21st

# 20-40% OFF

Jackets — Shirts — Thermals — Vests  
Gloves — Quilted Flannels

(All sizes available)

## Atlantic Uniform Co.

444 Washington Ave.

Belleville • 751-1242

Open 9 - 5:30

Mon. & Fri. 9 - 7:30

# For Me? Health Screening

Health screenings provide you with an assessment of your current health status in precisely targeted areas. The results are useful primarily in detecting potential problems which may require further testing, examination and/or evaluation.

Our screening sessions often include short educational presentations about the illness or disease targeted by the screening and the role of early detection in any subsequent treatment. Once your screening results are obtained, individual counseling can be arranged through our Health Educators. The counseling sessions will enable you to ask specific questions regarding your test results.

It should be emphasized that participation in a screening is not a substitute for an annual physical exam. It is a tool. Your designated physician will ultimately receive your screening results for review.

At all times, the Community Health Resource Center remains available to both yourself and your physician for further discussion of results.

### SCHEDULE:

#### ■ SCREENINGS

Space in screening sessions is limited. Please call 450-2119 between 8 am and 4 pm to reserve.

February 10th: Wednesday

☐ ORAL CANCER SCREENING, conducted in recognition of Dental Health Month. Screening for early detection of cancers of the gum, tongue, lips and throat area. Literature and information session preceding screening.

February 26th & 27th: Friday-Saturday

☐ WOMEN'S HEALTH SCREENING, includes pap smear, breast exam and health education about importance of early cancer detection and instruction on breast self examination. Open to all interested women, regardless of town of residence. Appointment required. Fee of \$15.00 payable at session.

coming later this spring...

April ☐ Male Health Screening

May ☐ Comprehensive Blood Screen

☐ American Cancer Society's Breast Cancer Detection Awareness

☐ Skin Cancer Education Program & Screening

#### ■ EDUCATIONAL PROGRAMS

Call for details and registration

Beginning January 19th: Tuesday

☐ AGING: ISSUES FOR THOSE WHO CARE, a six week series on caring for and coping with the elderly at home.

Beginning March 10th: Thursday

☐ DOMESTIC VIOLENCE, a three part panel discussion series on commonly occurring abuses.

## COMMUNITY HEALTH RESOURCE CENTER

(201) 450-2119

*knowing*  
**CLARA MAASS**

YOUR COMMUNITY MEDICAL CENTER and HEALTH RESOURCE  
ONE FRANKLIN AVENUE • BELLEVILLE, N.J. 07109 • VHA Medical Community Programs of America, Inc.



# Belleville Times

Serving Belleville Since 1909 (USPS 049-220)

Publisher: Frank A. Orechio Editor: Christopher Bifani

Assistant to the Publisher: Social Editor: Helen Maguire

Jaye H. Tarantino Sports Editor: Michael Lamberti

Published Every Thursday At 155A Washington Ave. Belleville, N.J. 07109

Second-Class Postage Paid At Newark, N.J. Postmaster: Send address changes to The Belleville Times, 155A Washington Ave., Belleville, N.J. 07109

All departments call: 759-3200  
Annual Subscription \$14.00  
Senior Citizens \$7.00

## THOUGHT FOR TODAY

If you want to be happy,  
Begin where you are,  
Don't wait for some rapture  
That's future and far.  
Begin to be joyous, begin to be glad  
And soon you'll forget  
That you ever were sad.

## Commission chops down the money tree

The Belleville Commission made a painful decision when it decided, 3-2, to stop throwing good money after bad in the municipal construction debacle. They put an end to a stream of spending, authorized by the previous administration, that now stands at three quarters of a million dollars.

Although Mayor Michael Pizzi, who voted with the previous commission to authorize the scrapped plan, said the Commission acted "irresponsibly" in the vote, the applause of townspeople indicated that the vote, nonetheless, was the will of the people.

This Commission will not be held to blame for continuing to waste money on a plan which is obviously unsuitable to the township's requirements. Instead, this Commission is to be praised for chopping down the money tree, for having the the good common sense to know that enough was enough.

Mayor Pizzi, along with Commissioner Joseph McGreevey - the other remaining incumbent on the board - stuck by their guns and continued to support the plan. All the scrap votes were from the newcomers to the Commission.

But fortunately for Belleville, there are indications of hope and good will on both sides that can surely lead to a new plan that includes a handsome, sturdy - but economical - addition to the back of Town Hall, connected by corridors which would house an elevator to serve both structures.

This concept, proposed by Frantantoni in 1986 - and which consulting engineer Neil Siciliano said he considered as far back as 1981 - is endorsed by this newspaper as the most practical and cost-effective answer to municipal and police department needs.

We'd like to see four floors of 5,000 square feet go up right in back of Town Hall, simply fashioned but constructed of the strongest brick and steel.

The town center needs more parking, and a building which takes up 5,000 square feet at ground level is going to leave room for more cars than one which takes up 8,000 square feet in an irregular form, as the Beckhard-Richlan plan would have done.

An extension to the back of Town Hall will also provide for all-weather access between police and municipal offices. This is a key reason for our endorsement of the addition idea over the separate building idea. The Beckhard-Richlan plan would have been situated across a parking lot on Belleville Avenue.

We encourage our town fathers to investigate the possibility of a \$3 million cap on a common-elevator addition project. Are there architects out there, perhaps based in Essex (or at least New Jersey), who can blue-print what we want for the price we can afford to pay? That notion is a promising avenue to pursue.

One more thought on the \$750,000 money tree:

It is no fault of either Beckhard-Richlan nor Neil Siciliano that they received large sums of money for their role in the scrapped plans. They were legally and publicly hired by the township to perform their functions.

Their fees, while high, are not unrelaistic in the world of major construction. They were business professionals making money at their businesses.

At times, townspeople were openly hostile to these Commission-authorized firms when they were only doing the jobs the town was paying them to do, at a price agreed on by the town.

That \$750,000 down the drain was the result of the previous commission. It was a mistake made by our own elected officials.

But all that's in the past now, and it is with optimism that we turn to the future.

Perhaps in 1988 and 1989, the Mayor, the Commissioners and all Bellevillites will be treated to the thrilling spectacle of giant girders rising behind our Town Hall, followed by steel crossbeams, floors, and the laying of permanent, enduring masonry.

After all we've been through, this would surely be a sight for sore eyes!

## Municipal 'monster'...

To the editor:

The Belleville Town Commissioners have labored mightily and for a long time only to bring forth a monstrosity. Who's responsible for this costly blunder? In my opinion this monstrous municipal construction project is allowed to grow any

more. It is already completely out of control. We have had five years of opposition to every proposal ever put forth to improve the heart of Belleville. Each time a proposal was defeated, another was put forward at an even higher cost. Yet the "obstructionists" (for want of a better term) continued to lobby for cheaper and cheaper prices, gutting the architect's design in order to save money, meanwhile the cost was rising, not diminishing. We now have the spectacle of one commissioner-trying to lower the payments to the consulting engineer in order to save one hundred thousand dollars while millions have been added to the costs.

How's that for a public spirited individual?

How blind can people be?

Originally the price tag for a new Public Safety Building was a paltry sum, the Federal Government would have borne most of the cost. Some selfish, near sighted people defeated the plan. What a stupid move. We almost got a new building for free but we were led by foolish people who were only really interested in projecting a false image of being concerned.

I believe that the Belleville Police work in difficult surroundings. I believe that the holding cells are a blight not worthy or indicative of the humane people of Belleville.

The revitalization of the seat of the town's government, I consider as crucial to the come back of this area. I, therefore, favored the putting up of a new structure at the proposed cost not to exceed 3.5 million as was proposed when the 10 million structure was defeated.

In an effort to reduce the cost, debates raged while the concerned citizens blocked effort after effort until the cost is now absolutely prohibitive. Instead of a 10 million Taj Mahal, a 6 million shack. The plan is now beyond salvation and should be scrapped.

Michael Giordano



## Girl Scouts seek members...

To the Editor:

Girl Scouting offers exciting and fulfilled opportunities for girls to learn about themselves as individuals and members of their families, communities, country and world. Through achievement oriented activities, each girl learns to master a full range of life skills designed to help her gain a positive perspective about herself, her womanhood and her role in society.

Under the umbrella of Girl Scouting, girls ages 5 through 17 actively participate in a group process of sharing, caring and growing through programs which promote friendship, self-esteem and group comradery.

The Belleville Girl Scout district has a goal to reach every girl in the community who is interested in becoming a Girl Scout by developing a program continuum from Daisies through Seniors in which girls can progress for as long as they desire to participate in the Girl Scout experience.

The Belleville membership drive is underway, and although there are many girls who are eager to be Girl Scouts there is still a need for adult support. Traditionally troops have been organized at schools or houses of worship. Today though there are many options available to fit Girl Scouting into a busy adult schedule. Persons who are not able to make a commitment to lead a troop alone can opt for sharing the responsibility with a co-leader or a team of leaders. Meetings can be held during the day, at night or on weekends.

In addition to leaders, we are looking for short-term volunteers, people who have a particular skill they can share or those who can serve as chaperones or trainers. The Girl Scout Council of Greater Essex County, located on Valley Road in Montclair, offers extensive training for adult volunteers and provides support wherever it is needed.

As you can see the options are many for those who have the time and interest. Take the lead... become a Girl Scout volunteer and remember, you don't have to be a parent to be involved in Girl Scouting!

Gloria Corriveau  
District chairman, Belleville  
Gay Sacchetti, field director  
Girl Scout Council of Greater Essex County  
746-8200

## Commissioner Risoli praised...

To the editor:

I would like to comment Commissioner Risoli for a job well done in our recent snow-storm.

On Friday, Jan. 8, the plow that finally arrived on Mitchell Street made a path down the center of the street, cleared up the dead-end and then returned up its narrow path to the main road. Furiously, I called the Dept. of Public Works and informed Commissioner Risoli that although everyone had removed their cars from the street, the plow did not go anywhere near the curbs. Within 10 minutes, he was at my home, examining the job done by the plow. Within 30 minutes, the plow returned and did a magnificent job of cleaning the remaining snow.

To my surprise, on Saturday morning, without making any calls to the Public Works Department, the plow returned and cleaned up the snow which had fallen during the night. In my 11 years as a Mitchell Street resident, a plow never even came down the street without first having been called and requested!

The town of Belleville is very fortunate to have such a conscientious gentleman as Commissioner Risoli in office. He and his crew did a splendid job!

Thanks, too, to Deputy Chester Greene who accompanied Commissioner Risoli and made personal visits to several homes on my street to see if anyone else had complaints. These men are really doing the job they were elected to do! Thank you!

Lynn Falduto  
Mitchell Street

## Speak your piece...

USE YOUR TIMES LETTER SECTION!

## Golden Comments

By James R. Golden

## Fighting the snow

Battling the throes of winter's most severe snow storm in many years, the valiant men of Belleville's Public Works Department, working in frigid temperatures, did an exemplary job in plowing and salting our township's streets — keeping them open for emergency equipment and passage of cars and fuel trucks as well as pedestrians until sidewalks had been cleared.

Not only were they out early after the storm struck, but, well into the night and the next day and also Saturday for a final clean-up all over town in a welcome improvement over past years.

For this long hoped-for type of winter storm clean-up, we must offer the "tip-of-the-hat" to Commissioner Angelo Risoli, who sees that his charges get the job done the way he wants it done.

When it comes to money matters look to a banker to find the answer... a novel plan arranged by J.P. Morgan, between Mexico and the U.S. Treasury, will allow Mexico to offer commercial banks up to \$10 billion in new securities backed by zero-coupon U.S. bonds in return for their old, shaky Mexican loans, now trading for 50 cents on the dollar in the secondary market.

Mexico gets long-sought debt relief. Banks will trade in \$2 of their old debts for \$1 of the new issue. It's estimated Mexico will save around \$900 million a year in interest costs as well as retire a significant portion of its old bank debt. Not only would that country's creditworthiness be helped but the saved money would be available for economic development.

Although U.S. banks appear to be losers, that's only on the surface for most. It's true that banks, in effect, will be writing off 50% of the loans they exchange for the new issue, but they'll also be able to take a tax loss on the transaction, which they couldn't do last year when they shored up their loan-loss reserves.

The U.S. also gains, too. The Treasury benefits by borrowing from Mexico to finance the national debt but not having to pay interest on its first issue of zero-coupon bonds until maturity in 20 years. The deal doesn't cost the taxpayer a cent. This enables Mexico to boost its economy, opening the door for increased U.S. exports... There are no losers.

The big question is: Will this new novel approach help other Third World debtor nations solve their problems? The answer is not clear. Few, if any, have the cash reserve available to copy the Mexico pattern exactly. Yet there is reason for optimism. Although Wall Street creditors abhor the term "forgiveness" of debts, that's what the Mexican plan is all about and it brought cheers from a champion of Third World debt relief, Senator Bill Bradley (D-N.J.), who called it a "workable solution."

Up to now, U.S. lenders have played the game of perpetual rollover, lending new money to debtors to meet interest payments without actually retiring much debt... Anthony Solomon, under secretary of the Treasury in the Carter administration, declares "The Mexico deal is the first major departure from that fiscal orthodoxy."

Bankers, themselves, see it as in their self-interest to "reward good behavior" meaning that if debtor nations watch their department — unlike Brazil which stopped interest payments — ways may be found to lighten their debt burdens.

The Mexican package was the second welcome bit of news for Treasury Secretary James Baker in a week. Previously Japan had unveiled a 1988 budget with a 4.8% spending increase, the biggest in six years. Outlays for public works, defense and foreign aid are headed upward, hopefully leading to more purchases of American goods which could help to lessen the U.S. trade deficit.



## Teachers lounge becomes cafe as

# International students host faculty feast at high school

Twenty-four students, representing 11 countries, hosted an international breakfast for the Belleville High School faculty and staff. On the morning of December 17, 1987, the teacher's lounge was converted into a multi-cultural cafe. All who entered were greeted by WELCOME signs in many languages.

Ethnic treats from India, Portugal, Italy and the Philippines were sampled and enjoyed.

Cookies, cakes, sweet rice, almond confetti and pastries were just some of the delectable assortment available.

Many students, dressed in their native garb, were available to discuss the sweets and their cultural background. The experience was multi-faceted, it enabled the staff to better understand the many cultures intertwined in the Belleville School system while allowing the students to share, and yet, maintain their culture in our democratic society.

The atmosphere was warm and festive and everyone seemed to enjoy the special morning.

Special recognition to Mr. Paolo DiRenzo, (English as Second Language) teacher, who initiated and supervised the entire event. The students wish to thank all the supporters who made this event the success it was.



Students pose with teacher Paolo DiRenzo.



Teachers enjoy ethnic culinary treats.

## Town banks provide prizes

# Kids win smoke-out poster contest sponsored by Clara Maass hospital



School 9 youngsters and their winning posters.

Students of Belleville School No. 9 recently participated in a poster contest to promote a "Smoke Free Environment." The event was sponsored by the Clara Maass Community Health Resource Center.

Students from grades four, five and six submitted posters relating to the theme of creating a smoke free society. One winner from each grade was selected and awarded a savings bond from local financial institutions.

Pictured from left are winners John Weir, grade 4: \$50 Bond from People's Bank; Dai Nguyen, grade 5: \$50 Bond from Provident Savings Bank; Mr. Michael Harvey, Principal, School No. 9; and Melissa Noto, grade 6: \$100 Bond from First Jersey National Bank, all of Belleville.

Congratulations to all!

## Town library site for tax program

The Belleville Public Library will be a site for the AARP Tax Aide Program, a tax counselling service provided at no cost to Senior Citizens.

The service will be available at the Main Library, 221 Washington Avenue, Tuesday through Thurs-

day, 10 a.m. to 1 p.m. A certified AARP-TCE Aide will be at the Library to assist in tax preparation.

Appointments are required and can be made by calling the Library at 450-3434 during regular library hours. The service is scheduled to begin on Tuesday, January 26 and

will continue until April 15.

If you plan to take advantage of this free service, assemble a folder of all relevant documents for ease in preparing your 1987 tax return.

Please call 450-3434 for more information or to arrange an appointment.



By Frank Orechio

Frank Orechio is on vacation this week so the column has been written by Tom Sullivan, editor of The Nutley Sun.)

"Moonstruck" from MGM and director Norman Jewison is that rarity in these enlightened days, a thoroughly literate film for adults who like gentle laughs. No car chases, laser zapping, fist fights or foul language.

It has a well known star in Cher, a less well known leading man in Nicholas Cage, and a supporting cast of Broadway players who make it a real slice of life and, to quote the well known film critic, Tom Kean, "play off one another like a string quartet, making the written word so much better."

That Kean is, of course, the same one who occupies the state house, and it may surprise many to know that he is an ardent theater and movie goer, and more than capable of deciding why a given play or movie works and another one doesn't.

BECAUSE ONE OF the supporting players in "Moonstruck" happens to be Olympia Dukakis, producing artistic director of Montclair's Whole Theater, MGM agreed to allow a charity premiere for the film at The Clairidge last Friday evening, with many of the players on hand and Governor Kean there, too, because he has long been a supporter of Whole and likes a dress-up night out, any way.

Like most of the well dressed guests who crowded in to the largest chamber of Paul Peterson's nicely modernized Clairidge, Kean enjoyed the movie with its bittersweet comedy, and made a very telling point about the effect of ensemble playing.

"Norman Jewison didn't know it when he hired us," said Danny Aiello, another of the ensemble, "but we had mostly known each other for years and in many cases

worked together. Also, he gave us the luxury of a two-week rehearsal, which is relatively unheard of in the movie business, so when the cameras started to roll, we had our accents and our relationships down pretty well."

"WHAT YOU HAVE in 'Moonstruck' is a play on film," Dukakis explained, "and for those of us who are stage actors, it was a treat. Such a literate script and from a relatively young man, John Patrick Shanley. In fact, just stating a fact, without downgrading anyone, you can see the difference between movie actors and stage actors in this film."

"Movie actors tend to take a script such as this and start scaling it down for themselves. Cher did that

and to a certain extent, so did Nicholas. But that's okay."

If she didn't say it, we can, that the most memorable moments of this movie about Italian-American life in Manhattan were given us by Dukakis, Aiello, Julie Bovasso and Vincent Gardenia. If you go over to the Clairidge and catch it, you will see an awful lot of people in it you know, and I don't mean the actors. I mean the people they play.

In other ways, the film shines. Its cinematography by British cameraman David Watkins is impressive and oldtime music man Dick Hyams almost steals the show away from a seasoned crop of show stealers by scoring the proceedings with variegated performances of operatic arias and resurrected 1940's and 50's recordings.

It's a good movie, for discriminating adult viewers, and we're happy to report that its opening weekend in a wide break was highly successful. If you have been heard to say "They don't make movies the way they used to," go see it. You may be glad you did. The premiere will be seen on "The Rainbow Magazine" at 7:30 Friday night on OBC's Channel 36.

## MONTCLAIR RADIOLOGICAL ASSOCIATES, P.A.

is pleased to announce  
the opening of its new office in the

FRANKLIN STATION PROFESSIONAL BUILDING

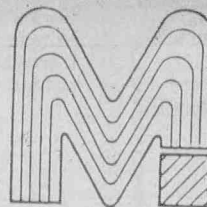
20 HIGH STREET  
NUTLEY, N.J. 07110  
(201) 284-1881

CT SCANNING DIAGNOSTIC RADIOGRAPHY ULTRASONOGRAPHY  
LOW DOSE MAMMOGRAPHY BONE DENSITOMETRY  
MAGNETIC RESONANCE IMAGING

445 Bloomfield Avenue  
Caldwell, N.J.  
(201) 228-5330

116 Park Street  
Montclair, N.J.  
(201) 746-2525

Kenneth L. Jewel, M.D. Barry I. Loigman, M.D. Richard F. Mattern, M.D.  
Steven D. Richman, M.D. Richard J. Stabile, M.D. Charles A. Whelan, M.D.  
Diplomates, American Board of Radiology



# MODERN MAN

(formerly JNC The Mens Store)

Nutley's Newest Mens & Young Mens Store

Invites You To Our

# JANUARY CLEARANCE

# 30-50% OFF

Selected Merchandise

# 20% OFF All Shoes

Featuring: Bruno Magli, Ennesi, Freeman

FREE SAME DAY ALTERATIONS ON PREMISES...  
For As Long As You Own The Garment!

Formal  
Rentals  
&  
Sales

Major  
Credit Cards  
Accepted



237 Franklin Avenue  
Nutley, N.J. • 201-661-2327

• Shoes  
• Custom  
Shirts

HOURS:  
Monday and Friday 10 - 9  
Tues., Wed., Thurs. 10 - 7  
Saturday 10 - 6



Family Chiropractic Office  
DR. SAMUEL SBARRA

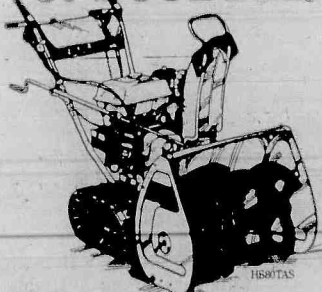
- Blue Cross/Blue Shield provider
- Medicare provider
- Most insurances accepted

Come Find Out What Chiropractic Is All About

482-0455  
Mon.-Fri. 10-2, 3:30-7pm  
Sat. 9-12

915 Franklin Ave.  
No. Newark, NJ  
(next to Kleib's Bakery)

# Blow away a storm.



Honda snowthrowers are built to start easily and run smoothly even in the most severe conditions.

They're available from 3.5 to 8 HP. With wheels or tracks. In self-propelled or push models. Most with an electric start option.

Two-way adjustable discharge chutes that rotate 220° allow them to throw almost any direction or distance you choose.

Honda snowthrowers. The easy way to turn that snowdrift back into a driveway.



165-175 Washington Ave.  
Belleville, N.J. 751-4545

For optimum performance and safety we recommend you read the owner's manual before operating your Honda Power Equipment. ©1986 American Honda Motor Co., Inc.

## FRANKLIN MEDICAL ASSOCIATES P.A.

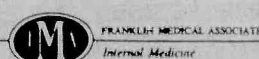


Louis J. Citarelli, M.D.  
and  
Donato Marucci, M.D.

NO APPOINTMENT  
NECESSARY FOR  
EMERGENCIES

- ★ Comprehensive health care for the entire family
- ★ Diagnostic, laboratory and X-ray facilities on premises
- ★ Minor emergencies and suturing
- ★ Allergy testing

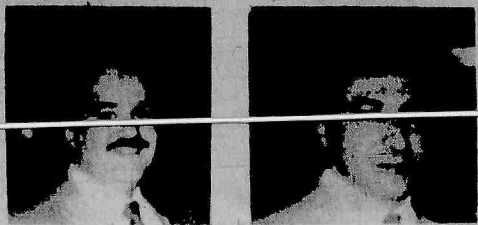
Open Mon. thru Fri. 9 - 5  
Tues. & Thurs. 9 - 7



14 Franklin Street  
Belleville, N.J. 07109  
751-2060



## Medically Speaking



By Dr. Lou Citarelli  
Dr. Dan Marucci

Dear Dr. Citarelli:

I am a 31 year old female, who was recently diagnosed as having Raynaud's disease. My doctor advised me to stop smoking, and avoid exposure to the cold whenever possible. I am curious to know if there is any other treatment or medication available for this problem?

ANSWER:

Raynaud's disease is classified as a type of vascular (blood vessel) disease, in which the affected blood vessels undergo spasms, that compromise the blood flow through these vessels. The areas most commonly affected are the hands and feet. These spasms are usually triggered by exposure to cold or to emotional stress. Classically, the skin of the affected areas often change colors during these attacks, turning pale, then bluish, then red. The duration of these attacks varies, from minutes to hours. The cause of Raynaud's disease is often unknown, or may be related to other diseases or exposure to certain toxins. It is very important that a careful medical history be obtained.

Therapy is usually directed towards treating the underlying cause of the disease, if one can be found. Smoking should be stopped, as nicotine can precipitate attacks. Direct exposure to cold or emotional stress should be avoided whenever possible.

Medication is available, but it is of limited value in the treatment of this disease.

When all the above measures fail, and the patient is suffering severely, surgery is sometimes performed on the affected areas to alleviate these spasms, but again, this is with limited success. There is much study being conducted with regards to the treatment of Raynaud's disease, and hopefully in the near future new treatment will be available.

Dear Dr. Marucci:

Next month, I'll be planning to take a winter vacation cruise. My problem is that I suffer severely from motion sickness, for which I usually take dramamine to control this problem. Recently, friends of mine informed me that there is another medication available which is available as a "skin patch." Could you comment on this? A.W. Belleville

Answer:

What you are referring to is transdermal scopolamine. Scopolamine is from a family of belladonna alkaloids, with well-known pharmacological properties. Scopolamine is indicated for prevention of nausea and vomiting associated with motion sickness in adults. This medication is marked as a small, flat, circular disk which is applied to the skin of the head, behind the ear. This disk will release medicine continuously over a period of three days. Certain patients prefer taking medication in this form due to the convenience it offers.

Before using this type or any other anti-emetic medication, consult your physician.

Send inquiries to:  
Medically Speaking  
c/o Franklin Medical Associates  
14 Franklin St.  
Belleville, N.J. 07109

### DENTALLY SPEAKING

By Drs. James D. Muglia  
and Paul N. De Maio

Ann C. of Nutley writes: "What is root cleaning? How do you know if you need a root cleaning or getting a root cleaning? I have a partial. If I have the remaining teeth cleaned and sealed under novocaine, should it be as costly as a full mouth?"

Ann proposed some excellent questions. Root cleaning or scaling of the gums is basically a deep cleaning. This is performed when a bone has receded and there is left a pocket of diseased gum surrounding the roots of the teeth. Plaque then accumulates in this area and forms tartar both on the roots and the teeth. In order to prevent further bone destruction and eventual loss of teeth it's essential to remove this tartar from the root surfaces. The deep cleaning removes the diseased gum as well as the tartar and plaque and allows healthy gum to reattach. The above can only be determined by your dentist via tissue examination and x-rays. A routine cleaning usually concerns itself with removing plaque from the exposed teeth above the gums. You would know if you're getting a root cleaning because you'll feel the instruments used go under the gums. This feeling is not one of pain since you would receive novocaine if desired. Also, you could ask the dentist for a hand mirror and could watch the instrument clean the debris from areas deep under the infected gum.

Since this procedure can be time consuming due to the difficult location of the tartar, fees are generally based on the number of affected teeth and their degree of severity. It could be more than a cleaning on a healthy mouth even though that person has a full set of natural teeth. Please discuss the fee in advance with your dentist but be assured, Ann, that if a root cleaning is needed it's essential in preservation of your own teeth. Afterwards your home care done daily and correctly will allow you to have more routine future cleanings. Thank you.

Send Inquiries To:  
Dentally Speaking  
671 Franklin Avenue  
Nutley, N.J. 07110  
667-4421

Charles E. Davies  
Director

We now accept  
Visa &  
Mastercard

## American School of Real Estate

SALESPERSONS AND BROKERS COURSES  
DAYS, EVENINGS AND SATURDAYS  
ALL YEAR ROUND

- THREE WEEK DAY COURSE  
Beginning Feb. 1st, Mon. to Fri. 9:00 - 2:00 p.m.
- SIX & TEN WEEK EVENING COURSES  
Beginning Feb. 1st, 6:30 - 10:00 p.m.
- 12 WEEK SATURDAY COURSE  
Start any time, 9:00 - 3:00 p.m.

ALL SALESPERSONS COURSES - \$285  
642 Bloomfield Ave.  
Verona, N.J. 07044 (201) 239-1216

CALL FOR A FREE BROCHURE

## From the Editor's Desk

# The King is dead, long live the dream

By Christopher Bifani

As I write this, it is Martin Luther King's birthday and the American nation mourns and remembers anew his brutal assassination nearly twenty years ago. Black people - and all minorities - in America have come a long way since 1968. But the Dream, of course, is still a fantasy.

True, there are more black elected officials today. About 4,000, according to the almanac, or about twice as many as there were the day the King was shot.

True, there are more blacks in executive positions. And more blacks living in the suburbs. And more blacks moving through the corridors of power, complete with magazines, associations and even "old boy networks" to move them up and along.

But the black underclass is just as rock solid as it was in 1968. Children who live in the predominantly black neighborhoods that lie mere blocks from the Belleville line will not receive an education equal to that of Belleville children residing immediately to the north. Not this year, not next year, not any time soon.

Black working-class men will not be hired as readily as white men when seeking employment or apartments.

### History of exploitation

The history of the negro, like that of the Jew or the American Indian, can not be changed. It is a history of savage prejudice and exploitation, and there will always be those in which that history festers like a sore.

There will always be those who will seek revenge for the past, rather than hope for the future - the essence of Dr. King's Dream.

This bitterness, so evident in the metropolitan area in recent months, presents more of an obstacle to fulfillment of the Dream than any bigotry on the part of the white majority. In fact, it provides cannon fodder for the bigot!

When black activists - led by a pastor! - engaged in civil disobedience actions to tie up vehicular and subway traffic, what was the result?

How many black citizens and citizens of all colors sat fuming in those traffic jams, alienated from the "cause" in one fell swoop?

"You have to draw the line

somewhere," said one Essex newspaper editor. "What if someone was sick and had to get to the hospital? That kind of action increases prejudice. It sets black people back." Interestingly enough, that editor leans toward liberal thought.

Other media professionals, to be sure, disagree. Said one associate editor of an Essex weekly on the transit tie-ups: "Those actions provided an outlet for blacks to express their outrage. If even one black chose participating in the civil disobedience instead of committing an act of violence, then it was worth it."

### Civil disobedience?

But is it civil disobedience? Or, like the first editor suggests, is it crossing the line?

In this editor's opinion, it is crossing the line. And, once crossed, we wonder where it ends. Black activists now talk of attempting to close down an airport. If this scenario comes to fruition, there is a potential for danger and the loss of countless dollars in productivity, manhours, and even spoilage - not to mention the disruption of

thousands of lives, black and non-black.

More disturbing is the chain reaction which may arise. Clashes between white reactionaries and black activists are virtually certain, and polarization - not equality, will be the immediate result.

One wonders what Dr. King would think of all this activity being committed in the name of his Dream!

### Education is the key

As the increasingly turbulent eighties draw to a close, it is becoming obvious that the fulfillment of the Dream rests not with law-breaking antagonistic activists, but with the people of all races who are striving first and foremost for equality in education.

Because when the day comes that the children in the neighborhoods south of the Belleville line are receiving educations equal to those which Belleville children receive, only then will the festering hatred begin to heal.

Only then will our future generations, bonded by the common thread of knowledge, have the tools to live in harmony.

## Bookmarks

### Childrens books on newborns

The James J. Cozzarelli Jr. Children's Room of Belleville Public Library announces the availability of books on newborns designed specifically for use with pre-schoolers. Some of the books available are: The New Baby by Fred Rogers; The New Baby at Your House by Joanna Cole; I Love my Baby Sister Most of the Time by Elaine Edelman; How I Was Born by Lennart Nilsson; Nobody asked me if I wanted a baby sister by Martha Alexander; and That New Baby by Sara Bonnet Stein.

For further information on these offerings, call Belleville Public Library, 450-3434, and ask to speak with a member of the Children's Room Staff.

### Martone is Library artist of the month

Imagine possessing the gift of expressing creative imagery on canvas and suddenly losing your only means of expression in an accident?

This is what occurred to Julia Martone, but instead of retiring from an exciting career, she started an exciting career, by beginning a rehabilitative process that enabled her to continue painting with her left hand.

Today, a member of the Rutherford Art Association, Art Center of New Jersey and the Ridgewood Institute, Julia Martone has created an impressive array of paintings, which are currently on display at the Belleville Public Library, 221 Washington Avenue, during library hours. Ms. Martone has exhibited her works at the William Carlos Williams Center, receiving the "Thoughts of Youth" award, and the North Arlington and Woodbridge Public Libraries.

She has also been the recipient of the honorable mention citation at a showing of artists' works at the Rutherford Public Library.

Originally from the Ukraine, she was educated at the Newark School of Fine and Industrial Art and the Fashion Institute of Technology. Painting since the age of 9, she has lived the past 27 years in Rutherford. During her years as owner of a fashion design company, her list of prestigious clients included Neiman Marcus and Lord and Taylor. Her exhibit includes watercolors, pastels, and oils.

### Valentine's Day films

The James J. Cozzarelli Jr. Children's Room of Belleville Public Library has various holiday filmstrips for use by nursery and elementary school teachers. For Valentine's Day, the filmstrip selection includes such titles as Arthur's Valentine (Marc Brown); Lollipop Dragon's Valentine Party; One Zillion Valentines (Frank Modell); The Story of Valentine's Day; and Twistytine Valentine. These and other holiday filmstrips may be borrowed for a two-day period. For further information, call Belleville Public Library, 450-3434, and ask to speak with a member of the Children's Room Staff.

### Monday evening branch hours

The Shafter Branch Library will be open Monday evenings from 1:00 p.m.-8:00 p.m. At this time, the Library will also offer the xerox machine for public use, the rental of a growing collection of videocassettes, and reference service. For further information, call Kathleen Mollica, Branch librarian at 450-3438.



At a program to honor the work of the late Dr. Martin Luther King, Jr., the Belleville Public Library featured a lecture and discussion by King scholar, Dr. Samuel Proctor of New Brunswick, Pastor of New York's Abyssinian Baptist Church. The program was sponsored by the M.L. King Commemorative Commission. Pictured (L-R) Library Director, David Bryant, King scholar, Dr. Samuel Proctor and Assistant Library Director Adrea Cohen.

### King on video

As a result of a grant from the Martin Luther King, Jr. Commemorative Commission, the Belleville Public Library's video program "Celebrate Books" and "Libraries in Focus" will tape a special program, entitled "Free at Last" at the Library, with host Library Director David Bryant and Dr. Geraldine Smith. Dr. Smith, an assistant professor of English, College of Liberal Arts, Drew University, gave the first lecture at Madison High School in 1987 for the first celebration of Martin Luther King, Jr.'s birthday.

The program, a commemorative one for Dr. Martin Luther King, Jr., will discuss Dr. King's significance in the civil rights movement, how colleges respond to the recognition of Dr. Martin Luther King,

FRADE'S  
DELI  
& caterers

Michael Frade

imported italian pastas  
cheeses and cold cuts  
catering for all occasions

311-313 Union Avenue Belleville • 759-3509

## Questions about the sweeping tax changes?

H&R Block has the answers.



Everybody's asking questions about the most sweeping tax changes in history. Our experienced preparers know the answers. We know the new laws and the new forms. We'll save you every dollar possible. And, you'll get the biggest refund you have coming! If there's ever a time for H&R Block, it's now.

**H&R BLOCK** DON'T FACE THE NEW TAX LAWS ALONE.

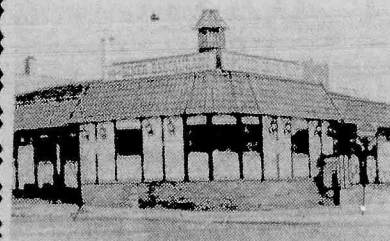
Belleville, 125 Washington Ave. .... 751-3836  
Nutley, 155 Franklin Ave. .... 235-1000  
Bloomfield, 18 Broad St. .... 743-0898

All offices will be open 9 a.m. to 9 p.m. Weekdays  
9 a.m. - 5 p.m. Saturdays and Sundays

Appointments and House Calls Available  
\* Speakers for your Club and Civic Group available  
Free of charge • Call any office for information



## The Choice of the People



7 Days  
24 Hours  
Delicious  
Salad Bar!

Italian  
Specialties!  
Steaks & Chops

All baking done on premises • Homemade pastries

Children's Menu Available

Special Breakfast Menu: 6-11 a.m.

Daily Businessman's Lunch: 11 a.m.-3 p.m. Salad Bar Open 11 a.m.-10 p.m.

ALA CARTE and COMPLETE DINNER MENU

We're Always Open

**WILLIE'S**  
DINER-RESTAURANT

9 State St., Bloomfield

Call 748-7414



## Obituaries

### Dorothy McDonald, 71

Dorothy McDonald, 71, of Belleville, died last month in her home. Services were held in St. Mary's Church, Nutley, following the funeral from Biondi Funeral Home, Nutley.

Born in Philadelphia, Mrs. McDonald lived in Belleville for 45 years after moving from Newark. She was an assembler and inspector for 22 years for Western Electric,

Kearny, before retiring ten years ago. She was a member of Belleville Senior Citizens and Tuesday and Friday Afternoon Clubs.

Surviving are two daughters, Mrs. Arlene Schmidig, Clifton, and Mrs. Corinne Palmieri, Fairfield; two sons, William Jr., Marlboro, N.Y., and Kenneth, Belleville, and 12 grandchildren.

### Joseph Abbaleo, 64

Services for Joseph Abbaleo, 64, of Bloomfield, were held earlier this month in St. Mary's Church, Nutley, following the funeral from Megaro Memorial Home.

Mr. Abbaleo died last month in Clara Maass Medical Center, Belleville.

Born in Newark, Mr. Abbaleo lived in Bloomfield for the last 16

years. For 15 years he owned Pak Machine and Glass Co. in Brooklyn. An army veteran of World War II, he earned a silver star and purple heart.

Surviving are his wife, Vivian; two sons, Joseph, of Nutley, and Anthony, of Bloomfield; one brother, Vincent, of Nutley, and four grandchildren.

### Fred D. Robinson, 63

Fred D. Robinson, 63, of Belleville, died early this month in Columbus Hospital, Newark.

Funeral services were held in Imperial Chapel, Irvine-Cozzarelli Memorial Home, Belleville.

Born in Phenix, Virginia, Mr. Robinson moved to Belleville 25 years ago from Brooklyn, New York. He was a mail handler for the U.S. Postal Office, Newark, for 25 years before retiring in 1978. He

was a member of Postal Workers Union, Local 300 Newark.

He is survived by his wife, Lorene Robinson; three daughters, Mrs. Linda M. Anderson, Lisa L. Wells and Lorlei Wells; three sons Lawrence Robinson, Kent Robinson, and Charles Wells; one brother, Frank Robinson; two sisters, Mrs. Sally Hamlett, and Mrs. Elizabeth Madison, and seven grandchildren.

### Robert E. Metcalfe, Sr.

Robert E. Metcalfe, Sr., 81, of Belleville, died Jan. 9 in Clara Maass Medical Center, Belleville.

Services were held Jan. 12 in Fewsmit Memorial Church following the funeral from S.W. Brown & Son Funeral Home, Nutley.

Born in Kearny, Mr. Metcalfe lived in Belleville for 53 years. He was an auditor for 45 years, employed by Royal Clobe Insurance Co., New York City, before retiring 16

years ago.

Mr. Metcalfe was a member of Old Guard of Nutley, Old Guard of Belleville, past president of Retired Men's Club of Belleville, AARP 2051 of Belleville, and Copstone-ophir Lodge 147 of Kearny.

Surviving are his wife, Lillian E. Pesvey; one daughter, Barbara Schickram of Cedar Grove; one son Robert Jr. of Califon; one sister, Alice Green of Kearny, and five grandchildren.

### Frank Marotti, 65

Frank Marotti, 65, of Belleville, died Jan. 17 in St. Michael's Hospital, Newark.

A Mass was offered Jan. 20 in St. Anthony's Church, Belleville, following the funeral from the LaMonica Memorial Home, Bloomfield.

Mr. Marotti had been a truck driver for Chemical Leaman Trucking of East Rutherford for 16 years before he retired in 1978. Previously, he had owned Marotti's Gulf Station in Belleville for

five years.

He was a World War II Army veteran and a member of Amvets Post 26 and the American Legion Post 299 in Belleville.

Born in Newark, he lived in Belleville for 21 years.

Surviving are his wife, Rose; three sons, Rocco, Anthony and Frank Jr.; a daughter, Mrs. Kitty DiLorenzo; two brothers, John and Michael; a sister, Mrs. Rita Driza, and nine grandchildren.

### Pagano, 72

Gelsomina Pagano, 72, formerly of Belleville, died Jan. 18 in Monmouth Medical Center, Long Branch.

Services were held Jan. 15 in St. Anthony's Church, Belleville, following the funeral from Biondi Funeral Home, Nutley.

Born in Newark, Mrs. Pagano moved to Eatontown three years ago after living in Belleville for many years.

Surviving are one daughter, Mary Ann Tamborrino of Eatontown; one son, William of Middletown, and two grandchildren.

**BEGIN THE NEW YEAR  
WITH A NEW YOU!!**

Join our  
**Weight Loss  
&  
Beauty Enhancement  
Adventure**

Call Today For Information  
**748-5200**

*pbt*

**Pragma Bio Tech, Inc.**  
225 Belleville Ave.  
Bloomfield  
Clinical Evaluations Division

# Plaza

 men's store

## Inventory Clearance Sale

# 50% OFF

## 3 Days Only

Thurs., Fri. & Sat., Jan. 21, 22 and 23

Choose From:

Di Mitri

Christian Dior

Tallia

Stanley Blacker

Thomas Anthony

- SUITS
- SPORTCOATS
- SLACKS
- OUTERWEAR
- FURNISHINGS

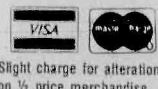


# Plaza

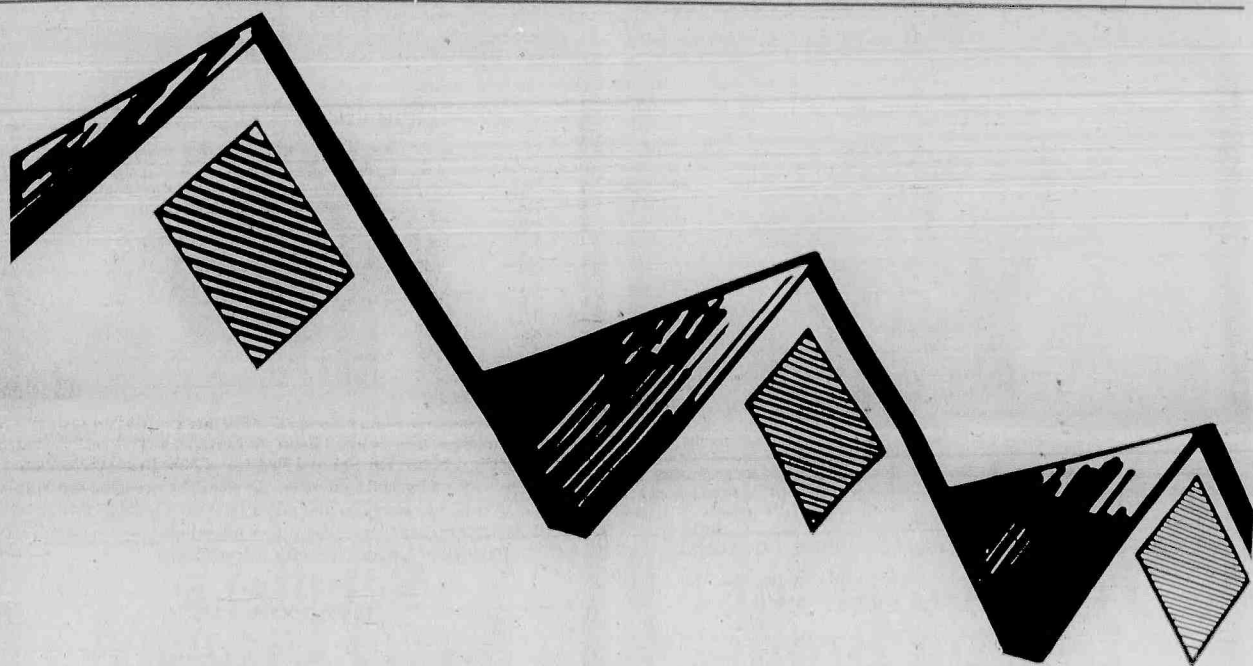
 Men's Store  
"The Alternative"

363 Franklin Ave. Belleville 759-0019  
(Channel Plaza at Joralemon St.)

Mon. & Fri. 9:30 - 9 P.M., Tues. - Sat. 9:30 - 5:30 P.M.

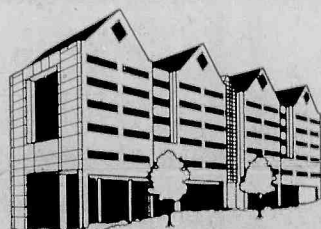


Slight charge for alterations on 1/2 price merchandise



## We're Reaching New Peaks to Serve You Better!

### Beginning this month, Mountainside Hospital will admit the first patients to its new patient care tower.

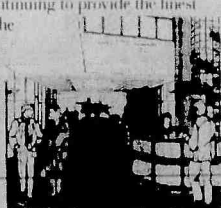


"On behalf of the Board of Trustees, Medical/Dental Staff, employees and volunteers of The Mountainside Hospital, it is my privilege to share with the community the following progress report on the hospital's new patient care tower."

*Bernard G. Koval*  
Bernard G. Koval  
President and Chief Executive Officer

This is the year that The Mountainside Hospital will open and formally dedicate its new six-story patient care tower. We'll be ready to provide you with up-to-the-minute services in our new Critical Care Units by the end of January. And, by the Spring, the tower will be fully operational and officially dedicated.

We've worked hard for the past few years to reach this moment. The hospital is proud of its record of providing for the health care needs of the community with peak services since 1891, and looks forward to continuing to provide the finest service along with the latest advances in medical technology with the completion of our new patient care tower.



The new patient care tower will also include:

- Crisis Intervention Center
- Birthing Center with three Birthing Rooms
- Three floors of Medical/Surgical Units
- Main Lobby and Admitting Department
- Solariums
- Gift Shop
- Coffee Shop

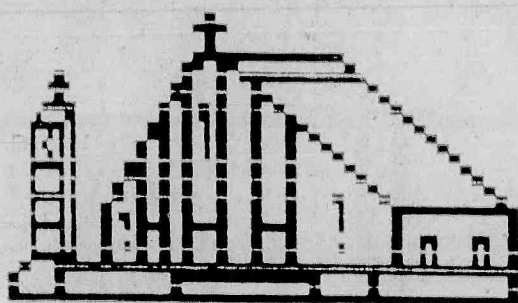


We've all watched the peaks of our roof line take shape this past year. At the same time, we at The Mountainside Hospital are proud to let you know that we are also reaching new peaks of service—providing state-of-the-art facilities to complement our services and programs, and the quality efforts of the Medical/Dental Staff, employees and volunteers.

The hospital's first commitment has always been the people we serve. Our new patient care tower will enable us to further meet the community's growing need for health care excellence as we move into our second century of service.

**THE MOUNTAINSIDE HOSPITAL**

Bay and Highland Avenues Glen Ridge/Montclair, New Jersey 07042



Learn About The Word Of God  
at

**Holy Family Parish**  
28 Brookline Avenue  
Nutley • 667-0026

**Evenings of Scriptural Discovery**  
Six Consecutive THURSDAYS  
at 7:30 p.m. in St. Joseph Center

**Bring A Friend or Family Member  
ALL ARE WELCOME!!**

Jan. 28, 1988 — God's Call: From Abraham to YOU!!  
Feb. 4, 1988 — In the Beginning... The Story of Creation  
Feb. 11, 1988 — The Story of Joseph  
Feb. 18, 1988 — Exodus: Wonder of Wonder, Miracle of Miracles  
Feb. 25, 1988 — From Desert to Promised Land with God  
March 3, 1988 — Preparing for Lent with the Pentateuch



# GRAND UNION



# PHARMACY

- Drug Interaction screening
- Drug Allergy screening
- Complete patient prescription history.
- Year-end medical expense summary.

**Your health needs are our main concern!**

We gladly accept



and



We honor major third party insurance prescription plans.

Grand Union's computerized Pharmacy means—

Of course we have all the brands and pharmacist, but you'll be on our computer, too. Your medical record and needs will be available at a button's touch, for safe reliability. Convenient? Drop off your Rx at The Pharmacy before you shop, it'll be ready when you are. Senior citizens (62 years of age or over), are eligible for prescription discounts of 10% off.

**PHARMACY HOURS:**

Monday thru Friday 9 A.M. to 9 P.M.;  
Saturday 9 A.M. to 6 P.M.;  
Sunday 9 A.M. to 2 P.M.

DIAL: 751-0666

Redeem the valuable coupon below at:

354 Main St. & Joralemon Ave.,

## Belleville

**SENIOR CITIZEN DISCOUNT COUPON**

### \$300 Off

Towards The Purchase Of Any New or Transferred Prescription

Including advertised prescription items — filled at a Grand Union Pharmacy Dept. This coupon does not apply to insurance or government payment plan programs. Limit one prescription coupon per prescription. Valid only for prescription of any person who is 62 years of age or older (verification of age required).

Coupon Good Jan. 20 Thru Jan. 26. Limit One Coupon Per Family.

U.S.D.A. Choice Ultra Trim Beef

### Top Round Roast

Also: Sirloin Tip or Rump Lb.

### 179

Tomato Puree, Whole Italian Style or

### Progresso Crushed Tomatoes

28-oz. Can

### 69

**Super GRAND UNION Coupon**

Assorted Varieties

### Duncan Hines Cake Mix

One 18.25-oz. Pkg.

### 49

No Minimum Purchase Required With This Coupon. Good Jan. 17 Thru Jan. 23. Limit One Coupon Per Family.

**Super GRAND UNION Coupon**

Coca-Cola Classic or Regular or Diet Sprite or Regular or Caffeine Free Tab or

### Coke or Diet Coke

One 2-Liter Btl.

### 79

No Minimum Purchase Required With This Coupon. Good Jan. 17 Thru Jan. 23. Limit One Coupon Per Family.

**Super GRAND UNION Coupon**

Assorted Flavors

### Dolly Madison Ice Cream

One Half Gal. Cont.

### 169

No Minimum Purchase Required With This Coupon. Good Jan. 17 Thru Jan. 23. Limit One Coupon Per Family.

U.S.D.A. Choice - Boneless Ultra Trim Beef

### Top Round for London Broil

Also: Sirloin Tip Lb.

### 219

California - Low in Sodium

### Seedless Navel Oranges

Bag of 8

### 169

Assorted Varieties

### Spigadoro Imported Pasta

2 16-oz. Pkgs.

### 100

Sliced  
**Thorn Apple Valley Bacon**

1-Lb. Pkg.

### 159

Fancy - Ultra Trim  
**Shoulder Veal Chops**

Blade Bone Lb.

### 249

The Natural Snack  
**Seedless Red Grapes**

Lb.

### 99

All Temperature  
**Cheer Laundry Detergent**

42-oz. Pkg.

### 159

Not Less Than 75% Lean  
**Fresh Ground Beef**

In Pkgs. of 3-Lbs. or More.

### 139

U.S.D.A. Grade 'A'  
**Country Pride Pick of the Chick**

3 Breasts split with ribs, 3 Thighs, 3 Drumsticks

### 99

U.S. No. 1 - Low in Sodium  
**All Purpose White Potatoes**

10-Lb. Bag

### 99

Big Tea Satisfaction  
**Tetley Tea Bags**

Pkg. of 100

### 199

**THE CORNER DELI**  
AVAILABLE IN STORES WITH SERVICE DELI

**THE BIG FREEZER**

**DATE-LINE DAIRY**

**HOME AND FAMILY**

**Baby Back Pork Spareribs**

### 599

In-Store Roasted - Fresh Domestic Pork

**Budget Gourmet Entrees**

Assorted Varieties

### 179

11-oz. Pkg.

**Breakstone's Whipped Butter**

Sweet or Lightly Salted

### 119

8-oz. Cont.

**Secret Roll-On Deodorant**

Assorted Varieties

### 159

1.25-oz. Pkg.

Deli Sliced To Order - Meat or  
**Russer's Beef Bologna**

Lb.

### 199

Mini Ears  
**Ore-Ida Cob Corn**

Pkg. of 6 Ears

### 99

Kraft - Sharp or Extra Sharp Colored  
**Cracker Barrel Cheddar Cheese**

10-oz. Pkg.

### 199

Helene Curtiss - Assorted Varieties Conditioner or  
**Salon Selectives Shampoo**

15-oz. Btl.

### 169

# GRAND UNION

**MOST GRAND UNIONS ARE OPEN 24 HOURS**

Check your local Grand Union for exact store hours



Not Responsible For Typographical Errors. We Reserve The Right To Limit Quantities. For Consumer Information or Assistance, Call Toll Free, 1-800-221-1835. Prices and Offers Effective Sunday, Jan. 17 thru Saturday, Jan. 23, 1988.



## Events in the area

### Fundraisers...

**Dinner fashion show**, sponsored by Nutley High School class of 1988, 6:30 p.m. Feb. 4, The Fiesta, Route 17 South, Woodridge. Fashions by Wild Bill's, I Do, I Do, The Formal Shoppe, Ups and Downs. \$20. For reservations, send check, made payable to NHS Class of '88, to Joanna Conrad, 504 Prospect St., Nutley, 07110.

**Fish and chips dinner**, sponsored by Bloomfield Knights of Columbus, 5:30 to 6:30 and 7 to 8 p.m. Feb. 5, 190 State St. For tickets, call Rose Ruffalo at 743-8688.

**Dinner dance**, sponsored by Bloomfield Elks Lodge, Feb. 13, 296 Bloomfield Ave. \$15. Proceeds to group's charities. For tickets, call Elsie P. Robinson at 746-0804 or Audrey Whelan at 239-7279.

**Beefsteak dinner**, sponsored by Nutley Civic Celebrations Inc., 7:30 p.m. Feb. 20, Parks and Recreation Dept., 44 Park Ave. \$15 includes unlimited steak, french fries, salad, soda, dessert and coffee. Proceeds will support Easter egg hunt, July 4th celebration and Santa Claus ride. For tickets call Beatrice Ucci at 661-2920 or Lillian De Filippis at 667-4693. Advance tickets only.

**Card party**, sponsored by Evening Membership Dept., Woman's Club of Nutley, 7:30 p.m. Feb. 25, 216 Chestnut St. \$4. For reservations, call 661-0362.

**Fourth Annual Champagne Brunch**, sponsored by Historic Restoration Trust, 11:30 a.m. to 1:30 p.m. Feb. 28, Ramada Inn, Route 3, Clifton. \$22 for adults, \$16 for children under 12. Proceeds to restoration of Kingsland Manor. Checks made payable to Historic Restoration Trust should be sent to D.J. Eisenfelder, 51 Enclosure, Nutley, 07110.

**Entertainment 1988 books**, St. Mary's School and Home Association, Msgr. Owens Place, Nutley. \$30. Save up to 50% on dinners, theater, special events, sporting events etc. Call Debbie Mowad at 667-5081 or St. Mary's School at 667-0801 8:30 a.m. to 3 p.m.

**Cookbooks**, featuring recipes by the best cooks and bakers of St. Paul's Congregational Church. \$6. Call Layne at 661-2909 or Ellen at 661-2063.

**Entertainment 1988 books**, Bloomfield Chapter of Hadassah. Save up to 50% on dinners, theaters, etc. Call 338-8972 or 338-8510.

**Bus trip to Daytona, Fla.**, sponsored by Bloomfield Knights of Columbus and Columbiettes 1178, Feb. 20-28. \$330 includes bus, 8 nights accommodations, visiting Disney World, St. Augustine, Daytona Beach, etc. For more information, call Rose Ruffalo at 743-8688.

**Fish and chips dinner**, sponsored by Nutley Irish American Assoc., 6 to 8 p.m. Jan. 22, Parks and Recreation building, 44 Park Ave. \$7.50. Catered by The Thistle. Live entertainment. Takeout 6 to 7:30 p.m. For tickets and information, call Lois Martino at 661-3200, 9 a.m. to 4:30 p.m.

### Fairs, flea markets, bazaars...

**Fun fair, flea market**, sponsored by School 3 Home and School Association, Jan. 30, 230 Joralemon St., Belleville. For tables at \$15, call Donna at 751-1786. Games and contests for children of all ages.

### Other events...

**Free health screenings at Montclair Community Hospital**, 120 Harrison Ave. Appointments necessary. Call 744-7300, ext. 4296, 10 a.m. to 1 p.m. daily. Jan. 23: skin cancer (Drs. Paul and Stephen LoVerne), eye disorders, not including prescriptions for glasses (Dr. Herbert Glatt); Jan. 25: cataracts (Dr. Howard Pruzon).

**Evening seminar on raising teens**, sponsored by St. Paul's Congregational Church, 8 p.m. Feb. 9, chapel of the church, 10 St. Paul's Place, Nutley. Speaker: Kay Willis, founder of "Mothers Matter" and mother of 10 who believes that parenting should be recognized as a profession. Public invited. Refreshments served. Donations accepted.

**Annual Carnevale**, sponsored by Nutley Italian American Civic Association, 7:30 p.m. Feb. 13, 642 Franklin Ave. \$17.50. Hot and cold buffet. For tickets, call chairlady Mary Romagnoli at 667-1473 or Ann De Fabbio at 667-0234.

**"The Laugh Factory,"** free workshop for all comedichumorous talent from teens to senior citizens, 7 to 10 p.m. Tuesdays, Student Union building, FDU campus, River Road, Teaneck. For more information, call 833-0068.

### Club meetings...

**Evening Membership Dept., Woman's Club of Nutley**, January luncheon, 11:30 to 2 p.m. Jan. 21 at the clubhouse, 216 Chestnut St.

**Belleville Lions Club**, luncheon meeting Jan. 22, Forest Hill Field Club, Belleville.

**Tri-County Camera Club**, 8 p.m. Tuesdays, Nutley Museum, 65 Church St. Jan. 26: workshop (members only), "Understanding Available Light." Meetings open to the public unless specified.

**Nutley Concerned Citizens**, 7:30 p.m. Jan. 26, Parks and Recreation building, 44 Park Ave. Thomas Gilheany, former member of the Nutley Planning Board, will speak about appearing before official boards at public hearings.

**Bloomfield Columbiettes**, 7:30 p.m. Jan. 27, K of C hall, 190 State St. Schedule for 1988 to be announced. Refreshments.

**Tri-Town Business and Professional Women's Club of Belleville**, Bloomfield and Nutley, monthly dinner meeting, 6:30 p.m. Jan. 28, Ramada Inn, Route 3 East, Clifton. For more information, call Frances Sentner at 667-1622.

**Belleville Junior Woman's Club**, second Mondays, 7:30 p.m., 51 Rossmore Place. Membership open to women 18 to 35. For more information, call 667-8359.

**The Old Guard of Belleville**, second and fourth Tuesdays, Fewsmith Memorial Presbyterian Church hall, Union Ave.

**Kwanis Club of Belleville**, 6:30 p.m. Thursdays, San Carlo Restaurant, Lyndhurst.

**Nutley Junior Women's Club**, 8 p.m. first Monday, 216 Chestnut St. Women 18-40 welcome. For information: Cary Intindola, membership chairman, at 284-0202.

**Rotary Club of Nutley**, luncheon meeting, 12:15 p.m. each Thursday, San Carlos Restaurant, Lyndhurst.

[To be included in this section, items must reach us by 3 p.m. the Friday preceding publication. Sorry, no exceptions. Send information to: Events in the Area, Orechio Publications, 800 Bloomfield Ave., Nutley, N.J., 07110. Limited to Belleville, Bloomfield, Nutley primarily. Other events included if space permits.]



Mr. and Mrs. Daniel Gammo — nee Deborah LaBar

## Gammo-LaBar wedding held in St. Anthony's

Deborah LaBar, daughter of Walter LaBar of Stroudsburg, Pa. and the late Jean LaBar, and Daniel Gammo, son of Mr. and Mrs. Daniel Gammo of Newark, were married recently in St. Anthony's Church, Belleville.

The Rev. Patrick Wilhelm performed the ceremony which was followed by a reception at Atrium West, West Orange.

Escorted by her father, the bride wore a white satin gown fashioned with a mandarin collar, draped open back and dolman sleeves. It was accented with fringe beading on the shoulders and hemline and trimmed with sequins and pearls.

A headband of pearls held her veil and she carried calla lilies, babies breath and eucalyptus.

Joann D'Amico of Syracuse, N.Y., was her sister's matron of honor. Bridesmaids included Cynthia and Camille LaBar of Belleville, sisters of the bride and Paula Iannia and Tina Matto, also of Belleville. Flower girl was Jacqueline LaBar of Bartonsville, Pa., niece of the bride.

They were attired in electric blue silk tea length dresses fashioned

with high necklines, dolman sleeves and dropped waists accented with a bow. Trimming was of rhinestones. Headpieces were rhinestone headbands and they carried calla lilies and babies breath. The flower girl, in a white satin dress with electric blue bow, wore babies breath in her hair.

Robert Sbaraglio of Newark was best man. Ushering were Walter LaBar of Belleville and Lewis LaBar of Bartonsville, brothers of the bride, Ronnie Kinder of Bloomfield and Michael Pettoni of Cedar Grove.

The groom's mother chose a gray silk tea length dress accented with sequins. Her corsage was a white lily.

Mrs. Gammo, an alumna of Belleville High School and Capri Institute of Hair Design, is with Gallery Haircutters, Caldwell.

Mr. Gammo, an alumnus of Essex Catholic High School and Kean College, Union, is an optician with Pearl Vision Center, Wayne.

The couple honeymooned on the Hawaiian islands of Maui and Oahu following the Oct. 4 nuptials and have made their home in Bloomfield.

### Catholic Daughters donate money to Palsy Center

At its Dec. 10 meeting, The Catholic Daughters of the Americas, Court Sancta Maria 61, donated monetary gifts to the Clifton Cerebral Palsy Center to be used to buy equipment for the school and to aid the children.

Members and guests enjoyed a catered buffet dinner sponsored by the officers of the court.

**BALNEO ESTHETIC INC.**

**European Skin & Body Care**

- Facials • Waxing
- Massage Therapy
- Seaweed Body Wraps
- Manicures & Pedicures

Gift Certificates Available

521 Franklin Ave.  
Nutley • 661-1818

Hours: Tues.-Thurs. 9:30-7 p.m.  
Fri. 9:30-9 p.m. Sat. 9-6 p.m.

**PAUL A. CAPUTO D.P.M.**

**GENERAL and SURGICAL CARE of the FOOT**

**DAY EVENING and SATURDAY HOURS**

345 Washington Ave.  
Belleville, N.J.

**759-6560**

**BELLEVILLE - KEARNY OBSTETRICS - GYNECOLOGY**

**HOWARD GRODER, M.D.**

**JEFFREY ROSEN, M.D.**

**HIGH RISK PREGNANCY INFERTILITY**

Clara Maass  
Professional Building  
5 Franklin Avenue  
Belleville, N.J. 07109  
759-0700

Arlington  
Medical Building  
837 Kearny Ave.  
Kearny, N.J. 07032  
991-1519

"Serving The Community For 40 Years"

## West Indies honeymoon for Mr. and Mrs. Tiene

Ellen A. Novak of Mantua, daughter of Mr. and Mrs. Theodore J. Novak of Phoenixville, Pa., and John K. Tiene, son of Mr. and Mrs. Guy J. Tiene of Nutley, were married Nov. 28 in St. Mary of the Assumption Church, Phoenixville.

The Rev. John C. Wilz performed the double ring ceremony. A reception followed at General Washington Country Club, Audubon, Pa.

Escorted by her father, the bride wore a traditional gown of ivory satin fashioned with a high neckline, long fitted sleeves, lace bodice and chapel train. It was accented with Alencon lace and seed pearls. A matching lace pillbox held her veil and she carried a cascade of gardenias, white roses, stephanotis and pale pink alstramaria lilies.

Eileen Navarro of Mont Clare, Pa., was her cousin's matron of honor. June Hunter of Santa Rosa, Ca., was the maid of honor. Bridesmaids included sisters of the groom, Maria and Elizabeth Tiene

of Nutley.

They were attired in tea length tone on tone silk dresses with white lace sailor collars and lace accents at the waist and cuffs. The matron of honor and one bridesmaid were in light rose while the maid of honor and the other bridesmaid were in light teal. They carried European clutch bouquets of deep pink roses and alstramaria lilies. Headpieces were of deep pink lilies.

Keith Fallon of Old Bridge served as best man. Ushering were brothers of the couple, Jeffrey Novak of Norristown, Pa. and Joseph and Peter Tiene of Nutley.

Mrs. Tiene, an alumna of Phoenixville Area High School and West Chester State College, is with Holman Enterprises, Pennsauken.

Mr. Tiene, a graduate of Nutley High School and Montclair State College, is with Allstate Insurance Co., Mt. Laurel.

The couple honeymooned in the West Indies and have made their home in Mantua.



Mr. and Mrs. John Tiene — nee Ellen Novak

### Fun fair/flea market Jan. 30 at School 3

School 3 Home and School Association is sponsoring a fun fair/flea market 10 a.m. to 4 p.m. Jan. 30 in the school gym.

Games and contests will be available for the children and food and fun will be featured for the entire family.

Tables at the flea market may be rented at \$15 by calling Donna at 751-1786.

"Diet Center changed my life."

"I can't believe how self-conscious I used to be about my weight. I wore loose fitting clothes and tried every fad diet that came along.

"Then I went to Diet Center. I learned how to change my eating habits and lost 28 pounds for good.

"Now I'm a happier, more confident person, and I think that makes me more attractive."

Whether you want to lose ten pounds or 100, call Diet Center today.

We can change your life.



April Breiten

**Diet Center**  
The weight loss professionals.

**Nutley**  
166 Chestnut St.  
667-8446

**Clifton**  
1115 Clifton Ave.  
773-4121



# '87 FORD LEFTOVERS

**MANY IN STOCK AT LOWEST PRICES EVER!**

**SAVE  
\$2790**

**BRAND NEW FORD**

**'87 ESCORT GL 2-DR. HATCHBACK**  
**"EQUIPPED - NOT STRIPPED"**

Std. Eq.: 1.9 Liter 4 Cyl. EFI Eng., B/W Tires, Pwr. Brks., Opt. Eq.: Pwr. Strg., 5 Spd. Man. Trans., A/C, Wide Bodyside Mldgs., AM/FM Stereo, Tint. Gls., Inter. Wipers, Frt. & Rr. Bumper Gds., Rr. Def., Dual Elec. Mirs., Instr. Grp., Light/Security Grp., Trim Rings, Stk #232, One in Stock at Exact Price, VIN #202767.

**MFR. SUGG. LIST PRICE** \$9389  
**FACTORY DISCOUNT** 749  
**MEAD FORD DISCOUNT** 1641



**AFTER \$400  
REBATE  
YOU PAY ONLY \$6599**

**\$6999**

**21 IN STOCK AT SIMILAR SAVINGS!**

**SERVICE LIKE YOU'VE  
NEVER SEEN BEFORE**

**OUR SERVICE  
DEPT. HAS  
MOVED...**

**TO OUR NEW CAR  
LOCATION.  
515 WASHINGTON AVE.**

**NEW EXTENDED HOURS  
8AM-8PM MON.-FRI.  
BIGGER & BETTER THAN EVER**

**NO WAITING!**

**MAKE AN APPOINTMENT NOW FOR**  
• WINTERIZING • LUBE & OIL CHANGE  
• BRAKES • FRONT-END • TUNE-UP  
**1-DAY SERVICE AVAILABLE!**

**SERVICE HOTLINE  
759-1200**

We Also Service Lincoln Mercury  
Products & All Other Makes.

©E.J. BARRIE ADVERTISING, 1987

**CALL FOR  
PRE-APPROVED CREDIT**

MR. HERNANDEZ 759-1200

**LOW RENTAL RATES**

CALL  
NANCY

RENT-A-CAR

**MEAD GUARANTEED USED CARS**

**'83 ESCORT 2-DR.**  
Ford, 4 Cyl., Auto., AM Radio, Pwr. Strg., Pwr.  
Brks., 30,223 mi. Stk #9790, VIN #111334. \$3495

**'83 C-20 VAN**  
Chevy, 8 Cyl. Eng., Auto Trans., Pwr. Strg.,  
Pwr./Brks., A/C., 45,995 mi. Stk. #9705, VIN  
#111021. \$6399

**'84 6000 LE 2-DR.**  
Pontiac, 6 Cyl., Auto., Pwr. Strg., Pwr. Brks.,  
A/C, Stereo, Vinyl Rf., Pwr. Winds., Cruise,  
Tilt, Rr. Def., 38,110 mi. Stk #9742, VIN  
#301864. \$6995

**'85 LTD CROWN VIC 4-DR.**  
Ford, 8 Cyl., Auto., A/C, Pwr. Strg., Pwr.  
Brks., Stereo, Vinyl Rf., Pwr. Winds./Locks,  
Cruise, Tilt, Rr. Def., 34,766 mi. Stk #9770, VIN  
#195726. \$6995

**'85 REGAL 2-DR.**  
Buick, 6 Cyl. Eng., Auto Trans., A/C, Pwr.  
Strg., Pwr. Brks., AM/FM Stereo W/Tape, Vinyl  
Rf., Cruise Cntrl., Tilt Whl, 25,102 mi. Stk  
#9536, VIN #431679. \$6999

**'84 LTD CROWN VIC 4-DR.**  
Ford, 6 Cyl., Auto., A/C, Pwr. Strg., Pwr.  
Brks., AM/FM Radio, Vinyl Rf., Rr. Def., 42,089  
mi. Stk #9671, VIN #166066. \$7299

**'84 COUNTRY SQUIRE WAGON** \$7299  
Ford, 8 Cyl., Auto., Pwr. Strg., Pwr. Brks., A/  
C, Stereo, Cruise, Tilt, 9 Pass., Rr. Def., 45,480  
mi. Stk #9722, VIN #149089.

**'84 LESABRE 4-DR.** \$7499  
Buick, 8 Cyl. Eng., Auto Trans., A/C, Pwr.  
Strg., Pwr. Brks., AM/FM Stereo/Tape, Vinyl  
Rf., Pwr. Winds./Dr. Locks/Sts., Cruise Cntrl.,  
Tilt Whl., Rr. Wind. Defogger, 42,114 mi. Stk  
#9686, VIN #946299.

**'84 CUTLASS 4-DR.** \$7499  
Olds, 8 Cyl., Auto., Pwr. Strg., Pwr. Brks.,  
Stereo W/Tape, Vinyl Rf., Pwr. Winds./Locks,  
Cruise, Tilt, Rr. Def., 30,733 mi. Stk #9745, VIN  
#386724.

**'84 PARK AVE. 4-DR.** \$7949  
Buick, 8 Cyl. Eng., Auto Trans., Pwr. Strg.,  
Pwr. Brks., A/C, AM/FM Stereo/Tape, Vinyl  
Rf., Pwr. Winds./Sts./Dr. Locks, Tilt Whl.,  
Cruise Cntrl., Rr. Defr., 38,656 mi. Stk #9712,  
VIN #800418.

**'83 TRANS AM 2-DR.** \$7999  
Pontiac, 8 Cyl. Eng., Auto Trans., A/C, Pwr.  
Strg., Pwr. Brks., T-TOPS, AM/FM Stereo, Pwr.  
Winds./Dr. Locks, Cruise Cntrl., Tilt Whl., Rr.  
Wind. Defogger, Mag Whls, 38,367 mi. Stk  
#9659, VIN #N21847.

**'86 CELEBRITY 4-DR.** \$7999  
Chevy, 6 Cyl. Eng., A/C, Auto Trans., AM/FM  
Stereo, Pwr. Strg., Pwr. Brks., Rr. Wind. De-  
fogger, 56,555 mi. Stk #9701, VIN #478089.

**'87 FIRENZA 4-DR. SEDAN** \$8995  
Olds, 4 Cyl., Auto., A/C, Pwr. Strg., Pwr.  
Brks., Stereo, Pwr. Winds./Locks/Sts., Rr.  
Def., 18,305 mi. Stk #9781, VIN #305228.

**'86 REGAL 2-DR.** \$9499  
Buick, Auto., Pwr. Strg., Pwr. Brks., 8 Cyl., A/  
C, Sunroof, Stereo W/Tape, Cruise, Tilt, Rr.  
Def., 22,024 mi. Stk #9751, VIN #221688.

**'85 DELTA 88 4-DR.** \$9499  
Olds, 8 Cyl. Eng., Auto Trans., A/C, Pwr.  
Strg., Pwr. Brks., AM/FM Stereo/Cass., Vinyl  
Rf., Pwr. Dr. Locks, Rr. Wind Defogger,  
16,621 mi. Stk #9694, VIN #3F9231.

**'84 RIVIERA 2-DR.** \$9995  
Buick, 8 Cyl. Eng., Auto., Pwr. Strg., Pwr.  
Brks., A/C, Stereo W/Tape, Vinyl Rf., Pwr.  
Winds./Sts./Locks, Cruise Cntrl., Tilt Whl., Rr.  
Def., 34,484 mi. Stk #9737, VIN #447132.

**'85 F-150 XL PICKUP** \$9799  
Ford, 8 Cyl., Auto., Pwr. Strg., A/C, Cap Run-  
ning Boards, Stereo, Pwr. Winds./Locks,  
Cruise, 30,084 mi. Stk #9717, VIN #B12756.

**'84 ELDORADO 2-DR.** \$11,399  
Cadillac, 8 Cyl., Auto., A/C, Pwr. Strg., Pwr.  
Brks., Stereo, Rr. Def., Pwr. Winds./Sts.  
Loaded, 45,761 mi. Stk #9794, VIN #659927.

**SAME  
DAY  
DELIVERY!**

**20 DEMOS  
TO CHOOSE FROM  
AT UNHEARD OF...  
SAVINGS!!!**

**'87 TEMPO LX 2-DR.**  
Ford, Std. Eq., 4 Cyl., Pwr. Strg., Pwr. Brks., Opt. Eq.  
2.3 Liter 5 Spd. Trans., A/C, Dlx. Def. Spd. Cntrl.  
Stereo/Cass. Demo, 7862 mi. Stk #007, One in Stock,  
VIN #104684 MFR. SUGG. LIST PRICE \$10,908.  
\$8599

**'87 ESCORT GT 2-DR.** \$9499  
Ford, Std. Eq., Pwr. Strg., Pwr. Brks., 1.9 Liter EFI Eng.  
5 Spd. Man. Trans., Opt. Eq. Stereo/Cass. A/C, Rr.  
Def. Tint Gls. Inter. Wipers-Elec. Sunroof & much  
much more! Demo, 2,000 mi. Stk #472, One in Stock,  
VIN #265006 MFR. SUGG. LIST PRICE \$11,778.

**\$400 MFR. REBATE AVAIL.  
\*FINAL COST TO YOU AFTER  
REBATE \$9099**

**BRONCOS! BRONCOS!  
15 IN STOCK at...  
SUPER SAVINGS!**

**100% FINANCING AVAILABLE**  
ASK ABOUT OUR  
1st TIME BUYERS  
PROGRAM

**AQUI  
SE HABLA  
ESPAÑOL**

Price incl. freight & prep. excl. tax & lic. fees.

**MEAD**



**515 WASHINGTON AVE. BELLEVILLE 759-1200**



# BUC SHOTS

(continued from page 11)

week as well, beating Passaic and Nutley. Belleville took an 8-3 record into this week's action, not bad considering all the injuries that have hit the team this winter. Head coach Karen Fuccello has done a fine job with the team. The girls are led by juniors Simone Edwards and Laurie Dondarski. We'll have more on the girls' team in next week's issue.

## LAST WEEKS QUIZ

The Los Angeles Rams were the last NFC team to win the conference championship on the road. The Rams defeated the Tampa Bay Buccaneers, 9-0 in the 1979 title game. The Rams lost in the Super Bowl to the Pittsburgh Steelers, 31-19 in January of 1980.

## FOR THIS WEEK

This is the Washington Redskins fourth appearance in the Super Bowl. Name the only NFC team that has made more appearances than Washington in the big game.

# BHS girl hoopsters beat Nutley, Passaic

The Belleville girls' basketball team won two big NNJIL contests last week, downing Passaic and Nutley. The victories boosted the team record to 8-3 on the '87-'88 season.

Karen Fuccello's troops took on top ranked Kennedy last Tuesday. This afternoon, the team is in Clifton for a 4 p.m. start. On Saturday, the girls play host to powerful Bloomfield in a 1:30 p.m. start. Next Tuesday, the team is off to Eastside for a 4 p.m. tip.

The girls started the week with a 55-51 setback at the hands of Columbia last Monday. The story of the game was the poor foul shooting by the Lady Bucs, who hit on just 11 of 22 attempts from the line. "That pretty much sums it up," Fuccello said last weekend. "It was a game we could have won. We

knew it would be a tough contest, but we could have won it. We missed 11 foul shots and lost by four points. That tells the story."

Junior guard Laurie Dondarski led the Belleville attack with 22 points. Dondarski had an outstanding week on the offensive side for the Lady Bucs. In three games last week, she tallied 66 points and was very impressive from the foul line. Against Columbia, she hit 7 for 10 from the stripe.

Junior forward Simone Edwards turned in 19 points in the Columbia game. Carol Morrison had three, Nicole Wright finished with two and Maria Chanley had two. The girls were without the services of sophomore Stacey Johansen, who has been out of the lineup with a hyperextended knee incurred in the Eastside game on January 7.

An examination of Johansen's knee revealed no ligament damage, but she will need a rehabilitation time before she can return to the Belleville lineup.

After losing to Columbia, Belleville came back strong the following day and defeated an old nemesis, Passaic. The final score was 60-55, with Dondarski and Edwards once again pacing the Belleville attack.

It was a game that appeared to be a cakewalk for the Lady Bucs. The score was tied at 12 after one frame, but Belleville outscored the Indians, 18-8 in the second frame and led, 30-20 at intermission. The lead ballooned to 47-30 after three quarters, but Passaic staged a furious rally in the final eight minutes and cut the margin to five points

before the clock ran out.

"We tired in the fourth quarter, but we came back strong in the last year," Fuccello said. "We've been hurt by a lack of depth, and with Stacey and Racquel (Melson) hurting, it takes away from our attack."

Melson, a senior guard, had a strong game against Passaic, but reagravated her knee during the game and is questionable for this week's action.

Leading the way for Belleville against Passaic was Dondarski, with 22 points. Edwards finished with 20, Melson had eight, Joann D'Ambrose had four, Wright finished with four and Chanley had two. It was the first time Belleville had beaten Passaic since January of 1985, when Desiree Johansen scored 30 points to lead the way.

Last Friday night, Belleville traveled to Nutley and came away with an impressive 52-40 win. The victory boosted the girls record to 4-2 in the NNJIL, good for third place in the league behind powerful Kennedy.

The game was decided early when Belleville jumped out to a 13-3 first quarter lead and a 31-18 halftime advantage. The second half was just about even, with Nutley picking up a point advantage in the final 16 minutes.

Edwards turned in a super ball game, hitting for 25 points. The junior also had 20 rebounds. Dondarski closed out her excellent week with 19 points. Wright had four points, Morrison closed with two and Chanley had two. Belleville shot 21 of 33 from the foul line in the game.

Last Tuesday, Belleville had a monstrous assignment when it took on Kennedy, ranked second in the state and undefeated this season. The Lady Knights not only have good size with center La Tonya Johnson, a 6'4" division one prospect, they also have excellent speed.

"They're an excellent team," Fuccello said of Kennedy. "Johnson gives them strength in the middle, but they also have good speed in their backcourt. Kennedy is a very young team, too. They're going to be good for many years."

This Saturday, the assignment is also a formidable one when Bloomfield comes to town. The Bengals are ranked sixth in the state and number one in Essex County. The girls started slowly, but are on a roll now and appear to be one of the best teams in the Group IV, Section II area once again. Last year, Bloomfield won the state sectional championship and advanced to the Group IV title game before losing. To Belleville's credit, it battled Bloomfield hard a few weeks ago, losing by 13. It was a one point contest after three quarters before Bloomfield took control in the final eight minutes.

**NO HIGHWAY HASSLE!**  
**SHOP US FIRST... SHOP US LAST... BUT, SHOP US!!!**

# BIGELOW

**SEE THE "1988's" HERE NOW!!**

**7 YR./70,000 MI. WARRANTY!**

**WE'VE BEEN IN BUSINESS OVER 48 YEARS!! WE'RE EXPANDING TO SERVE YOU BETTER!!**

## '88 PLYMOUTH RELIANT

List Price \$10,197  
BIGELOW DISC - 1,058



4-dr Sedan w/optional: automatic transmission, AM/FM stereo, full size spare tire, tinted glass, rear defrost, 4-cyl engine, air condition, w/standard: power steering & brakes & more! Stk. No. 1475. VIN No. 100266.

**\$9139**

## '87 CHRYSLER LEBARON COUPE

List Price \$17,108  
BIGELOW DISC - 2,250  
Chrysler Rebate 770



2-dr Premium w/opt: 2-tone, AM/FM stereo, alum whls, A/C, rr def, cruise, l/whl, pwr mirrors/windlocks, pwr str/brks, 4-cyl TURBO disc pkg, htr sts & more! Stk No. B1383 VIN No. 162361.

**\$14,088**

## '88 CHRYSLER LEBARON

List Price \$13,601  
BIGELOW DISC - 1,500



4-dr Sedan w/opt: Popular equip disc, 2.5L 4-cyl eng, am/fm stereo, full size spare, wire whl covers, WSW tires, w/std: pwr steer & brakes, auto trans, & more! Stk. No. 1478. VIN No. 102571.

**\$12,101**

## '87 CHRYSLER LEBARON GTS

List Price \$16,754  
BIGELOW DISC - 1,820  
Chrysler Rebate 770



4-dr Hatchback w/opt: 4-cyl TURBO, auto trans, lux whl covrs, perf tires, l/whl, undercoating, elect spd ctrl, rr def, pwr conv pkg, AM/FM w/cass, w/std: pwr str/brks, htr bkt sts & more! Stk No. B6-1464, VIN 547708.

**\$14,164**

## '88 PLYMOUTH COLT E

List Price \$6673  
BIGELOW DISC - 425

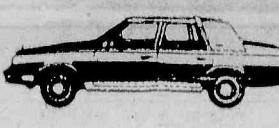


3-door Hatchback w/std: 4-speed manual transmission, 4-cyl engine, rear wiper/washer, manual steer & brakes, steel belted radials, dual reclining bkt sts & more! Stk. No. B1516. VIN No. 002180.

**\$6248**

## '87 CHRYSLER NEW YORKER

List Price \$18,760  
BIGELOW DISC - 3,838  
Chrysler Rebate 770



4-dr Sedan w/opt: 2.2L 4-cyl TURBO, rr def, pwr ant/lcks/sts, spd ctrl, htr ht whl, lhum entry syst, lther int, air cond, whl covrs, an fm cass, w/std: pwr str/brks, 3-sp auto trans, WSW SB radials & more! Stk No. BE 1010, VIN 144108. Demo w/16,146 mi.

**\$14,152**

**BEST DEALS ON USED CARS...NOW!!!**

## '82 ESCORT

\$1995

Ford 4-dr SR, 4-cyl eng, auto trans, pwr steering & brakes, AM/FM stereo, 56,122 mi. Stk. No. 6146. VIN No. 197401. As Is Special!

## '80 VERSAILLES

\$4295

Lincoln 4-dr V8, auto trans, pwr steering & brakes, air cond, AM/FM stereo, pwr windows, 82,046 mi. Stk. No. U6021. VIN 601804. As Is Special!

## '84 LASER

\$6995

Chrysler 2-dr, 4-cyl eng, auto trans, pwr steer & brakes, air cond, pwr winds, 6759 mi. VIN 191694.

## '85 CELEBRITY

\$8495

Chevy EuroSport 2-dr, 5-cyl eng, auto trans, pwr steering & brakes, air cond, AM/FM stereo, pwr kks, rr whl, 10,995 mi. Stk. No. 6388. VIN No. 210256.

## '78 MOTORHOME

\$9995

FARWEST on Dodge chassis, V8, auto trans, pwr steering & brakes, htr, A/C, air cond, AM/FM stereo, shower & generator, sleeps 5, all hook-ups & more! 39,922 mi. Stk. No. 6385. VIN No. 714730. The Family RV Life!

## '80 MUSTANG

\$2495

Ford 2-dr SR, 4-cyl eng, auto trans, pwr steering & brakes, air cond, AM/FM stereo, 61,418 mi. Stk. No. U6134. VIN 175063.

## '85 TURISMO

\$5995

Plymouth 2-dr, 4-cyl eng, auto trans, pwr steer & brakes, air cond, AM/FM stereo, 20,674 mi. Stk. No. U6324. VIN 202347. Must Be Seen!

## '85 LANCER

\$7395

Dodge 4-dr SR, 4-cyl eng, auto trans, pwr steering & brakes, air cond, am/fm stereo, 15,802 mi. Stk. No. 6379. VIN 164028.

## '84 CAMARO Z28

\$9559

Chevy 2-dr, 5-cyl eng, auto trans, pwr str/brks, air cond, AM/FM stereo, pwr windows, 1-tops, 30,282 mi. Stk. No. U6337. VIN 113186.

## '86 LASER

\$10,395

Chrysler 2-dr, 4-cyl eng, auto trans, pwr steering & brakes, air cond, 7984 mi. Stk. No. U6222. VIN 174241.

## '85 CARGO VAN

\$2995

Dodge V8, auto trans, pwr steering & brakes, air cond, 48,366 mi. Stk. No. 6381. VIN No. 200381. As Is Special!

## '82 5th AVENUE

\$6495

Chrysler New Yorker 4-dr, V8, auto trans, pwr steer & brakes, air cond, AM/FM stereo, pwr windows, 11,311 mi. Stk. No. 6215. VIN 181470.

## '85 ELBORADO

\$7995

Lincoln V8, auto trans, pwr steering & brakes, air cond, AM/FM stereo, htr int, pwr windows, 46,535 mi. Stk. No. U6035. VIN 279132. As Is Special!

## '85 CELEBRITY WGN

\$7995

Chevy 3-pass, 4-cyl eng, auto trans, pwr steering & brakes, air cond, am/fm stereo, rr def, 21,926 mi. Stk. No. 6380. VIN 108688.

## '87 5th AVENUE

\$13,995

Chrysler 4-dr, V8, auto trans, pwr steering & brakes, air cond, rr def, AM/FM stereo, pwr windows, 11,311 mi. Stk. No. U6356. VIN 779533.

## '82 GRANADA

\$3795

Ford 5-cyl eng, auto trans, pwr steering & brakes, air cond, cassette, pwr winds, 37,842 mi. Stk. No. U6098. VIN 112614. Super Clean Cond.

## '86 SPECTRUM

\$6595

Chevy 4-dr, 4-cyl eng, auto trans, man steering & brakes, air cond, AM/FM stereo, Stk. No. 6349. VIN 427482.

## '84 5th AVENUE

\$8495

Chrysler 4-dr, V8, auto trans, pwr steering & brakes, air cond, AM/FM stereo, pwr windows, 43,146 mi. Stk. No. U6264. VIN 529880. Flawless Cond!

## '84 BONNEVILLE LE

\$6895

Pontiac 4-dr, 6-cyl eng, auto trans, pwr steering & brakes, air cond, AM/FM stereo, pwr winds, 33,898 mi. Stk. No. U6299. VIN 213829.

Prices incl. freight & prep. Excl tax & MV. Must bring ad to quality for sale prices. Offer good thru Jan. 21, 1988.

**BIG... BIGGER... BIGELOW**  
**CHRYSLER/PLYMOUTH**  
50 Washington Avenue  
Belleville, N.J.  
759-4220

**WE'RE MINUTES FROM YOU!**

- 5 MIN. FROM NEWARK
- 5 MIN. FROM N. ARLINGTON
- 5 MIN. FROM KEARNY
- 5 MIN. FROM BLOOMFIELD
- 10 MIN. FROM UNION COUNTY
- 10 MIN. FROM THE ORANGES

**COUPON SPECIAL CAR WASH**  
**\$3.50 + Tax**  
For Full Service  
Exterior \$2.75 + Tax  
(With This Coupon)

**FRANKIE'S FUTURMATIC BRUSHLESS CAR WASH**  
305 Broad St. • Bloomfield  
748-9459  
Open Mon. - Sat. 8 - 6  
and Sun. 8 - 3

# LOUIS PONTIAC

## IN LYNDHURST

5000 ROUTE 21  
PARK AVENUE  
LYNDHURST, N.J.

**939-6100**

**SELECT '87 & '88 MODELS**

**MAKE YOUR BEST DEAL THEN DEDUCT REBATE**

**UP TO \$1000 REBATES**

**HUGE DISCOUNTS UP TO \$2000**

**1988 PONTIAC GRAND AM**

**\$13,669**

**NEW 1988 GRAND AM SE**  
Pontiac - 2 dr. Coupe. Stand equip incl: 2L MFI 4 cyl TURBO eng, pwr. steer/brks, gauges, tach, eng blk htr, WS6 perform pkg, P215x60R-14 brrs. Opt. Incl: auto trans, sunr, frt & rr mats, rr def, am/fm cass w/equal, A/C, lamp grp, pwr/winds/sts, lhum vis/van, ltr & rht pwr rem mirrs, Stk No. 19228. 1 in stock. VIN 682714. List: \$15,660.

**EXTRA! EXTRA! GMAC GUARANTEES CREDIT FOR FIRST TIME CAR BUYERS. NO CO-SIGNERS.**

**YOUR LOCAL PONTIAC DEALER FOR BIGGER SAVINGS! PARK AND RIVERSIDE AVE., LYNDHURST**  
HOURS: MON-FRI 9-6, WED 9-8, SAT 10-5

Price(s) include(s) transportation, shipping, dealer preparation and any other costs to be borne by a customer, except for licensing costs, registration fees and taxes.

# ALL OUT CLEARANCE

## OF BETTER USED CARS!

**'82 6000 SEDAN**  
Pontiac 4-dr, 6-cyl eng, auto trans, pwr steering & brakes, air cond, tinted glass, rr def, am/fm stereo, 51,978 mi. VIN 507973. **\$4995**

**'84 Thunderbird**  
Ford 4-dr, 4-cyl eng, auto trans, pwr steering & brakes, air cond, tinted glass, rr def, am/fm stereo, 34,166 mi. VIN 209206. **\$6995**

**'84 SUNBIRD**  
Pontiac 2-dr, 4-cyl eng, auto trans, pwr steering & brakes, A/C, tinted glass, rr def, stereo, 34,166 mi. VIN 232492. **\$5295**

**'84 FERO**  
Pontiac 4-dr, 4-cyl eng, auto trans, pwr steering & brakes, air cond, tinted glass, rr def, am/fm stereo, 32,190 mi. VIN 211771. **\$5595**

**'84 CHEVETTE**  
Chevy 4-dr, 4-cyl eng, auto trans, man/steer/brks, A/C, tinted glass, rr def, am/fm stereo, 29,738 mi. VIN 732900. **\$3695**

**'85 Parisienne**  
Pontiac 4-dr, 4-cyl eng, auto trans, pwr steering & brakes, A/C, tinted glass, rr def, am/fm stereo, 23,231 mi. VIN 177667. **\$9695**



## Looks forward to productive session

## Crecco sworn in

Assemblywoman Marion Crecco (R-Essex) was sworn in to her second term in the New Jersey General Assembly this past Tuesday. At the swearing in ceremonies, conducted at the Trenton War Memorial, Crecco was sworn in along with the other 79 members of the Assembly.

The Oath of Office was administered by Assembly Speaker Chuck Hardwick (R-Union). Speaker Hardwick received his Oath of Office as Speaker of the General Assembly by Governor Tom Kean. Hardwick was re-elected as Speaker by a unanimous vote.

"My first term in office proved to be an invaluable learning experience," Crecco said. "The last session of the Legislature was very productive and I look forward to working with Speaker Hardwick and Governor Kean to make the 203rd Legislature even more productive."

Crecco, a resident of Bloomfield, was elected to her first term to the General Assembly in November 1985 and re-elected this past November.

## Fights on for reserve cap

In an attempt to help stabilize municipal property taxes, Assemblywoman Crecco has reintroduced a bill which would place a cap on the amount a municipality can hold in reserve for uncollected taxes. The bill was known as Assembly Bill 4388 during the past session.

Under provisions of the bill, the cap would be 10 percent over the average amount of taxes not collected by the municipality for the previous five years, or 5 percent of the total local tax to be raised for municipal purposes. Currently, there is no cap on this amount.

"The reserve for uncollected taxes is charged directly on municipal tax bills," said Crecco, Vice-Chair of the Assembly State Government Committee. "If a municipality is charging more than is necessary for this purpose, then we as taxpayers pay more than we should. This bill will correct this

and lower property taxes."

Crecco added that this bill will be before the municipal government committee during the legislative session. She stated that the idea for this legislation was suggested by Commissioner Vincent Frantantoni of Belleville.

Crecco is currently serving her second term in the New Jersey General Assembly. She also serves as a member of the Independent and Regional Authorities Committee. She represents Belleville, and the Essex municipalities of Bloomfield, Cedar Grove, Glen Ridge, Montclair, Nutley and Verona.

Are you a slanderer  
...or a whisperer?

You have heard them. I have, too. Maybe, in our weaker moments, we have been among them. A name comes up in a conversation. Someone has something good to say about that person. However, our twisted minds hear in their praise some implied criticism of ourselves.

Immediately, our tongues spring into action. Where praise has been offered, we return censure. "Did you know..." or "Have you heard..." or "I wonder..." may be the way we begin. Then we offer our little innuendo, our slur on his character, our question about his motives or our reminder of some long-forgotten mistake.

We do not do it openly - that would be too obvious. Then folks

Religious  
Viewpoints

Submitted by  
Gerald Fortunato, Pastor  
Silver Lake Baptist Church



would know our real motive is jealousy. No, we whisper our "concern" in hushed, reverent tones. That way no one can doubt our "sincerity." "Sincerity" is what we call it; the Bible just calls it "sin." Paul accuses the godless of being "...gossips, slanderers..." (Rom. 1:29,30). These two sins are companions. The difference between them is more subtly than substance.

The slanderer is one who does not care who hears what he has to say. He openly talks others down.

The gossip is much more subtle. He does his work in small, intimate groups. The slanderer and the gossip are both character assassins. The slanderer "blows away" his victim; the gossip slips up and quietly slits his throat.

The whisperer is much more dangerous than the slanderer. He is harder to defend against for a couple of reasons:

1. Slanderers make allegations; whisperers cast aspersions. They do not charge wrongdoing; they just question motives. Motives are a hard thing to prove or disprove.

2. Slanderers do their work openly; whisperers do theirs secretly. The victim may never know he has been victimized, so he never has a chance to clear his name.

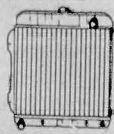
"There are six things the Lord hates. Seven that are detestable to Him: haughty eyes, a lying tongue, hands that shed innocent blood, a heart that devises wicked schemes, feet that are quick to rush into evil, a false witness who pours out lies and a man who stirs up dissension among brothers" (Prov. 6:16-19).



Taking a break — The 1988 Belleville High School varsity cheerleaders pause for a picture. (Photo by Michele Suchomel)

## RADIATOR SPECIALISTS

- ★ radiators cleaned & repaired
- ★ heater core installed
- ★ gas tanks
- ★ complete radiators



COMPLETE INSTALLATION  
REPAIRS ON ALL MAKES AND MODELS

All Work Guaranteed Open 5 Days Fast, Free Pick-Up and Delivery

Located at Joe's Alignment Service  
597 Washington Ave., Belleville / 751-7433

25 YEARS AGO

The first  
and the last

By Gregg Friedmann

January 17, 1963...Mrs. Anne Bini had the last Belleville baby of 1962 (named Thomas), while Mrs. Marie Drake gave birth to the first Belleville baby of 1963 (a boy).

Criminal activity this week was the work of Belleville teenagers. First, two Belleville High School students skipped school, took the family car, and went for a ride. The pair managed to crash it into a tree, and left a note explaining what had happened. Next, they stole a station wagon in West Millford and drove to Florida, where they were caught and thrown in jail. Their fate was unknown.

The second escapade involved a Belleville boy and his Newark companion (both 18) who were being held in a Passaic County Jail under \$2500 bail. This duo was charged with three counts of auto theft, based on their possible involvement in a large auto theft ring.

Meanwhile, the Bellboys were able to top Nutley, 37-28 in hoop action.

Finally, an eye-catching ad read that Motor Trend Magazine had voted the 1963 Rambler "car of the year." One reason was its new styling based on "lean, clean lines that are apparent from almost any angle." That is, except our angle...one taken some 25 years later.

## The Market Basket

Fruit Cocktail.....\$1 for 3 cans  
Cream Cheese.....21 cents for 2 pks.  
Mustard.....29 cents for 2 jars  
Cheerios.....39 cents per pkg.  
Coffee.....95 cents per jar  
Lamb Chops.....69 cents per lb.  
Raisins.....55 cents for 2 pks.  
Margarine.....\$1 for 4 pks.

Auto Parts & Equipment  
★ Exact Replacement Parts  
★ Top Quality Parts  
★ Fast Expert Service  
"BUY DIRECT & SAVE"

Riverside  
Auto Supply  
876 Riverside Ave., Lyndhurst  
939-5663  
Open 7 days

Crown Chevrolet  
is Increasing  
Their Volume!

REBATES  
UP TO  
\$1,000  
See dealer for details

Based on our excellent 1987 sales volume,  
the factory has increased our sales objective by  
50%. We've got the cars... we've got the financing...

WE'RE LOWERING OUR PRICES  
AND GOING FOR VOLUME!!!

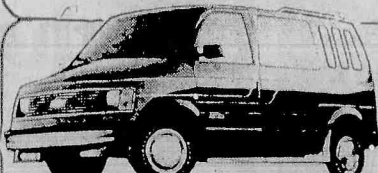
## SPECTRUMS!

Brand New 1988 4-DOOR SEDAN, Stk. No. 7086. VIN 615548, List \$7999. Here's What You Get...

- x 5-Spd Man Trans
- x Power Disc Brakes
- x Odrometer
- x Rack & Pinion Man. Steer
- x 1.5 Liter 4-Cyl engine
- x Reclining Buckets

Total Payments \$7369.92

\$153<sup>54</sup> per mo.



## ASTRO VANS!

1987 MARK II CONVERSION, Stk. No. T-1255, VIN 221639, List \$17,520.84.

- x 4.3L EFI V/6
- x Pwr Steering
- x AM/FM Stereo w/cass
- x Roof Rack
- x Center Console
- x Tilt Wheel
- x 1700 lb. Payload
- x Auto Trans w/O/D
- x Pwr Disc Brakes
- x Air Cond
- x Recliner chairs w/skirts
- x Ice Chest
- x Complete Glass and Much More!

\$13,888!



## CELEBRITYS!

Brand New 1988 4-DOOR SEDAN, Stk. No. 5186, VIN 683998, List \$13,249. Here's What You Get...

- x 2.8L MFI V/6 Engine
- x Pwr Disc Brakes
- x AM/FM Stereo
- x Air Cond
- x Hvy Duty Battery
- x Auto Trans w/O/D
- x Pwr Rack & Pin. Steer
- x Dual Sport Mirrors
- x Elect Rr. Defogger

Total payments \$11,088

\$231 per mo.



## NOVAS!

Brand New 1988 4-DOOR SEDAN, Stk No. 5113, VIN 217317, List \$10,620. Here's What You Get...

- x Power Steering
- x 1.6 L. 4-cyl Engine
- x Auto Trans
- x AM/FM Stereo
- x Reclining Buckets
- x T/Glass
- x Air Cond
- x Power Disc Brakes
- x Power Locks
- x Digital Clock
- x Side Window Defogger

Total Payments \$188<sup>47</sup> per mo.

\$9846.56



## BERETTAS!

Brand New 1988 2-DOOR COUPE, Stk. No. 5053, VIN 319274, List \$11,627. Here's What You Get...

- x Air Cond
- x Auto Trans
- x Pwr Disc Brakes
- x Cruise Control
- x AM/FM Stereo
- x Quad Halogens
- x Odometer and more!
- x 2.8L MFI V/6
- x Pwr Rack & Pin. Steer
- x Dual Sport Mirrors
- x Tilt Wheel
- x Intermit. Wipers
- x Tachometer
- x Reclining Buckets

Total Payments \$204<sup>60</sup> per mo.



## PICK-UPS!

4 x 4 Brand New 1988 FLEETSIDE Stk No. T1332, VIN 991235, List \$15,718. Here's What You Get...

- x Air Cond
- x Pwr Disc Brakes
- x 5.0L EFI V/8
- x Buckets
- x Radio
- x Painted Rr. Step Bumper
- x 4-Spd Auto Trans w/O/D
- x Pwr Steering
- x Sliding Rr. Window
- x Rallye Wheels
- x Hvy Duty Battery

Total Payments \$264<sup>58</sup> per mo.

\$12,699.84

Used Cars  
Q not Q\*

'87 MONTE CARLO SS \$13,888  
CHEVY, V/8, white, auto trans, pwr strng/brks/wnd, air cond, AM/FM stereo cass, tilt, cruise, 1-tops, cust whls. 9629 mi. VIN No. 125437.

'83 STATION WAGON \$5888  
CHEVROLET, CALAIS, 9-pass wgn, 2-tone lght & dk brwn, auto trans, pwr strng/brks/wnd/ck, air cond, wire whls, Uglis, VIN 615532. 55,111 mi. Great Car!

'83 CENTURY \$5888  
BUICK, Custom, 2-tone brwn, 4-dr, 6-cyl, auto trans, pwr strng/brks/wnd, air cond, AM/FM stereo cass, VIN 428119. 52,692 miles.

'85 CAVALIER \$5488  
CHEVY, 4-dr, gold, 4-cyl, auto trans, pwr strng & brks, A/C, AM/FM stereo. 29,296 mi. VIN No. 226282.

'84 CUTLASS SUPREME \$6888  
OLDS, White, 4-dr, 6-cyl, auto trans, pwr strng & brks, air cond, AM/FM stereo cass, pwr wind, tilt, cruise, vinyl top, 50,617 miles. VIN 301822.

'84 CELEBRITY \$7488  
CHEVY, Silver, 4-dr, auto trans, pwr strng/brks/wnd/cks, air cond, AM/FM stereo, cruise, 40,911 miles. VIN 174403.

'84 CIERA BROUGHAM \$7888  
OLDS, 4-dr, white, 6-cyl, auto trans, pwr steer/brks/wnd/cks, air cond, AM/FM stereo cass, tilt, cruise. VIN 332906. 53,062 miles.

'85 CARAVAN \$8388  
DODGE, 5-pass wgn, auto trans, pwr strng & brks, AM/FM stereo cass, tilt whl, Stk No. 100149. VIN No. 181734. 36,555 miles.

'84 CAMARO Z28 \$7888  
CHEVY, Red, V/8, 5-spd man trans, pwr strng/brks/wnd, air cond, AM/FM stereo cass, 1-tops, 48,117 miles. VIN 120293. Stk No. 100213.

'87 CARGO VAN \$9888  
CHEVY, 6-cyl, eng, auto trans, pwr steer/brakes, AM/FM stereo, 15,940 mi. VIN 104081.

'86 CIERA LS WAGON \$9888  
OLDS, V/6, auto trans, pwr strng & brks, air cond, AM/FM stereo cass, pwr wind & lcks, tilt cruise. 24,264 miles. VIN No. 407623.

'86 CAMARO IROC \$11,888  
CHEVY, V/8, auto trans, pwr steer/brakes, air cond, AM/FM stereo cass, tilt whl, cruise, pwr winds/lcks, 23,519 mi. VIN 149341.

\*Quality not Quantity.

Prices include freight, prep and all costs except taxes, licensing and MV Fees.

Crown Chevrolet  
514 Washington Avenue, Belleville  
759-4200



GM QUALITY  
SERVICE PARTS



Mr. Goodwrench



(continued from page 1)

voted to kill the plan, only Commissioner Frantantoni had announced in advance his intention to cast a nay vote.

"Who were they trying to kid?" Fornarotto had said prior to the vote. "This thing would end up costing at least \$7 million."

Commissioners Risoli and Frantantoni said they didn't make up their minds until just a few hours before the vote.

"I don't know which way I'm going to go. I'll probably make up my mind at dinner with my wife," Commissioner Frantantoni said at lunchtime, the day of the meet. Frantantoni was a strong supporter of building a "modest extension" to the back of Town Hall, with a common elevator connecting both buildings.

The Commissioner first proposed this concept in 1986 when he was President of the Concerned Citizens of Belleville.

Commissioner Risoli said, "I didn't make up my mind until 6:30PM." He added that the Commission would move forward by looking at alternatives.

"It was a shame to waste \$800,000 but I made up a list of reasons why we should continue with this project and reasons why we should end it. I came up with about eight reasons for ending it and only two or three for keeping it," the Public Works Commissioner explained.

Jerry DelGuercio, newly sworn President of the Concerned Citizens of Belleville said "I'm jubilant at the outcome of the vote." He added that he supports a modest expansion to Town Hall, after the township knows how much the Essex garbage crisis is going to cost. A related editorial appears in this week's edition of The Belleville Times.

By Christopher Bifani

## Haynes miniature wins highest merit

# Town artist honored



"A Private Peace" is the title for Richard Haynes' prize winning miniature (above) enlarged to show detail. Actual size is 3 1/4 by 3 1/2 inches.

Belleville artist Richard William Haynes has won the First In Highest Merit Award at the 13th Annual International Miniature Show in Clearwater, Florida.

The show features nearly 1000 art works juried from thousands submitted by artists throughout the world.

Haynes' realistic style displays the extreme detail that is a hallmark of Miniature Art.

"Quite separate from 'dollhouse art,' miniature fine art is the same as 'normal size' art except that it is perhaps 3x4 inches instead of 3x4 feet. Miniature art is much sought after by collectors, as little space is required to build a substantial collection," Haynes said.

Richard Haynes' work may be seen locally in the Essex Fine Arts Gallery in Montclair and in the annual New Jersey Miniature Art

Society's exhibition to be held at the Paper Mill Playhouse in Short Hills this May.

Previously, Haynes won Best In Show honors at an international show in Washington, D.C.

### NOTICE

The regular meeting of the Board of Commissioners scheduled to be held on Tuesday, January 26, 1988 will be held in Belleville High School Auditorium, 100 Passaic Avenue, Belleville, N.J. with the pre-meeting beginning at 7:00 p.m. and the open public meeting at 8 p.m.

Mary Lou Hood  
Township Clerk

Belleville Times  
Jan. 21, 1988  
Fee: \$4.70

No. B88-17

### SHERIFF'S SALE

SUPERIOR (LAW) K-443  
SUPERIOR COURT OF NEW JERSEY, LAW DIVISION, ESSEX COUNTY, DOCKET NOS. L-079520-85 J-7632-86 NUTLEY SAVINGS & LOAN ASSOCIATION, a NEW JERSEY CORPORATION PLAINTIFF vs. ELMER JANKE and MARILYN JANKE, his wife, DEFENDANTS EXECUTION

By virtue of the above stated writ of Execution, to me directed, I shall expose for sale by Public Auction, in SHERIFF'S OFFICE, Essex County Courts Building in Newark, on Tuesday, the 26th day of January next, at one-thirty P.M. (Prevailing Time) all the right, title, and interest of the above named defendants, ELMER JANKE & MARILYN JANKE, his wife, of and to, ALL that tract or parcel of land and premises situate, lying and being in the TOWN of Nutley, in the County of Essex and State of New Jersey, more particularly described as follows:

BEGINNING at a point in the Easterly line of Weston Street distant 625 feet southerly from the corner formed by the intersection

of the Southerly line of Grant Avenue with the Easterly line of Weston Street; and running thence Southwardly along the Easterly line of Weston Street 50 feet; thence Eastwardly and parallel with Grant Avenue 120.69 feet; thence Northwardly and parallel with Weston Street 50 feet; thence Westwardly and parallel with Grant Avenue 120.69 feet to point or place of BEGINNING.

Being also known as Lot 5, Block 386

Being commonly known as 22 Weston Street, Nutley, New Jersey. A DEPOSIT OF 20% OF THE BID PRICE IN CASH OR CERTIFIED FUNDS IS REQUIRED AT THE TIME OF SALE.

The approximate amount of the Judgment to be satisfied by said sale is the sum of SEVEN THOUSAND TWO HUNDRED TWENTY-SIX DOLLARS AND TWO CENTS (\$7,226.02) together with the costs of this sale.

The Sheriff reserves the right to adjourn the sale from time to time as provided by Law.

NEWARK, N.J. December 21, 1987  
THOMAS J. D'ALESSIO, Sheriff  
Donohue, Donohue,  
Costenbader & Strasser, Attorneys  
Belleville Times  
Dec. 31, Jan. 7, 14, 21, 1988  
Fee: \$109.04  
No. B87-475

### SHERIFF'S SALE

SUPERIOR (CHAN) G-33  
SUPERIOR COURT OF NEW JERSEY, CHANCERY DIVISION, ESSEX COUNTY, DOCKET NO. F-3380-87 TRICO MORTGAGE CO., INC. PLAINTIFF vs. LEON HERBERT & LINDA A. HERBERT, his DEFENDANTS Execution For Sale of Mortgaged Premises

By virtue of the above stated writ of Execution, to me directed, I shall expose for sale by Public Auction in SHERIFF'S OFFICE, Essex County Courts Building in Newark, on Tuesday, the 2nd day of February next, at one-thirty P.M. (Prevailing Time)

Property to be sold: CITY: NEWARK COUNTY: Essex STATE: New Jersey Premises known as: 56 Dover Street Dimensions: 25' x 100' Nearest cross street: Cliff Street

A full legal description can be found in the office of the Register of Essex County.

A DEPOSIT OF 20% OF THE BID PRICE IN CASH OR CERTIFIED FUNDS IS REQUIRED AT THE TIME OF SALE.

The approximate amount of the Judgment to be satisfied by said sale is the sum of FIFTY THOUSAND SEVEN HUNDRED NINETY-FOUR DOLLARS AND TWELVE CENTS (\$50,794.12) together with the costs of this sale.

The Sheriff reserves the right to adjourn the sale from time to time as provided by Law.

NEWARK, N.J. December 28, 1987  
THOMAS J. D'ALESSIO, Sheriff  
Greenberg, Shmerelson, Weinroth & Elsh  
Attorneys  
Belleville Times  
Jan. 7, 14, 21, 28, 1988  
Fee: \$82.72

No. B88-1

### SHERIFF'S SALE

SUPERIOR (CHAN) G-24  
SUPERIOR COURT OF NEW JERSEY, CHANCERY DIVISION, ESSEX COUNTY, DOCKET NO. F-6988-85 FEDERAL NATIONAL MORTGAGE ASSOCIATION PLAINTIFF vs. HOWARD L. KING, et al, DEFENDANTS Execution For Sale of Mortgaged Premises

By virtue of the above stated writ of Execution, to me directed, I shall expose for sale by Public Auction, in SHERIFF'S OFFICE, Essex County Courts Building in Newark, on Tuesday, the 26th day of January next, at one-thirty P.M. (Prevailing Time)

Municipality: City of Newark, County of Essex Street address: 799 West End Avenue, Newark, N.J.

Tax Lot and Block: Lot 18, Block 4051A on the Tax Map

Approximate dimensions: 25 feet x 100 feet

Nearest Cross street: Eighteenth Avenue 125'

A full legal description can be found in the office of the Register of Essex County, in Book 4538, Page 1.

A DEPOSIT OF 20% OF THE BID PRICE IN CASH OR CERTIFIED FUNDS IS REQUIRED AT THE TIME OF SALE.

The approximate amount of the Judgment to be satisfied by said sale is the sum of TWENTY THOUSAND NINE HUNDRED TWO DOLLARS AND TWENTY-ONE CENTS (\$20,902.21) together with the costs of this sale.

The Sheriff reserves the right to adjourn the sale from time to time as provided by Law.

NEWARK, N.J. December 21, 1987  
THOMAS J. D'ALESSIO, Sheriff  
Alvin D. Miller, Attorney  
Belleville Times  
Dec. 31, Jan. 7, 14, 21, 1988  
Fee: \$73.32

No. B87-476

### SHERIFF'S SALE

SUPERIOR (CHAN) G-43  
SUPERIOR COURT OF NEW JERSEY, CHANCERY DIVISION, ESSEX COUNTY, DOCKET NO. F-440-87 COMMONWEALTH MORTGAGE CORPORATION N/A COMMONWEALTH MTG. CO. OF AMERICA, LP, Plaintiff vs. BEATRICE WHITE, et als, DEFENDANTS Execution For Sale of Mortgaged Premises

By virtue of the above stated writ of Execution, to me directed, I shall expose for sale by Public Auction, in SHERIFF'S OFFICE, Essex County Courts Building in Newark, on Tuesday, the 9th day of February next, at one-thirty P.M. (Prevailing Time)

Municipality: Town of Irvington County and State: County of Essex State of New Jersey

Street and Street Number: 34 Cornell Street Lot 2 Block 297

Dimensions: Approximately 36.34 feet x 100.0 feet x 32.20 feet x 100.08 feet

Nearest Cross Street: Approximately 100.0 feet from Chancellor Avenue

A full legal description can be found in the office of the Register of Essex County.

A DEPOSIT OF 20% OF THE BID PRICE IN CASH OR CERTIFIED FUNDS IS REQUIRED AT THE TIME OF SALE.

The approximate amount of the judgment to be satisfied by said sale is the sum of EIGHTY-THREE THOUSAND EIGHT HUNDRED FIFTY-EIGHT DOLLARS AND SEVENTY-NINE CENTS (\$83,858.79) together with the costs of this sale.

The Sheriff reserves the right to adjourn the sale from time to time as provided by Law.

NEWARK, N.J. January 4, 1987  
THOMAS J. D'ALESSIO, Sheriff  
Booth, Kenny, Dougherty & McKenna, Attorneys  
Belleville Times  
Jan. 14, 21, 28, Feb. 4, 1988  
Fee: \$86.48

No. B88-8

### SHERIFF'S SALE

SUPERIOR (CHAN) G-53  
SUPERIOR COURT OF NEW JERSEY, CHANCERY DIVISION, ESSEX COUNTY, DOCKET NO. F-4160-87 FEDERAL NATIONAL MORTGAGE ASSOCIATION, PLAINTIFF vs. LEONARD G. LANGLEY, et ux, DEFENDANTS Execution For Sale of Mortgaged Premises

By virtue of the above stated writ of Execution, to me directed, I shall expose for sale by Public Auction in SHERIFF'S OFFICE, Essex County Courts Building in Newark, on Tuesday, the 16th day of February next, at one-thirty P.M. (Prevailing Time)

Municipality: Irvington County Essex STATE OF N.J.

Street & Street No. 75 Chapman Place TAX BLOCK AND LOT

Block 26 Lot 2

DIMENSIONS OF LOT

45.27' x 110'

NEAREST CROSS STREET

intersection of Chapman Place and Laurel Avenue

A full legal description can be found in the office of the Register of Essex County, in Book 5003, Page 1011.

A DEPOSIT OF 20% OF THE BID PRICE IN CASH OR CERTIFIED FUNDS IS REQUIRED AT THE TIME OF SALE.

The approximate amount of the Judgment to be satisfied by said sale is the sum of FORTY THREE THOUSAND SIX HUNDRED THIRTY DOLLARS AND NINETY-THREE CENTS (\$43,630.93) together with the costs of this sale.

The Sheriff reserves the right to adjourn the sale from time to time as provided by Law.

NEWARK, N.J. January 11, 1988  
THOMAS J. D'ALESSIO, Sheriff  
William M.E. Powers, Jr., Attorney  
Belleville Times  
Jan. 21, 28, Feb. 4, 11, 1988  
Fee: \$84.60

No. B88-16

### SHERIFF'S SALE

SUPERIOR (CHAN) G-38  
SUPERIOR COURT OF NEW JERSEY, CHANCERY DIVISION, ESSEX COUNTY, DOCKET NO. F-1909-87 INVESTORS AND LENDERS, LTD., a New Jersey Corporation, PLAINTIFF vs. RUTH M. HOCK (unmarried) and JOHN DOE husband of RUTH M. HOCK, given name unknown DEFENDANTS Execution For Sale of Mortgaged Premises

By virtue of the above stated writ of Execution, to me directed, I shall expose for sale by Public Auction in SHERIFF'S OFFICE, Essex County Courts Building in Newark, on Tuesday, the 2nd day of February next, at one-thirty P.M. (Prevailing Time)

PREMISES BEING LOCATED IN THE TOWN OF BLOOMFIELD, COUNTY OF ESSEX, AND STATE OF NEW JERSEY.

BEING LOT .28 BLOCK 192

DIMENSIONS OF LOT: 58' x 134'

NEAREST CROSS STREET: (Corner of Maolis Avenue and Ashland Avenue)

COMMONLY KNOWN AS: 98 Maolis Avenue, Bloomfield, New Jersey.

A full legal description can be found in the office of the Register of Essex County.

A DEPOSIT OF 20% OF THE BID PRICE IN CASH OR CERTIFIED FUNDS IS REQUIRED AT THE TIME OF SALE.

The approximate amount of the Judgment to be satisfied by said sale is the sum of FORTY-SEVEN THOUSAND SIX HUNDRED TWENTY-TWO DOLLARS AND FORTY-NINE CENTS (\$47,622.49) together with the costs of this sale.

The Sheriff reserves the right to adjourn the sale from time to time as provided by Law.

NEWARK, N.J. December 28, 1987  
THOMAS J. D'ALESSIO, Sheriff  
Jay P. Okun, Attorney  
Belleville Times  
Jan. 7, 14, 21, 28, 1988  
Fee: \$88.36

No. B88-2

ALL ROADS LEAD TO...

# LAIRD JOHNSON

## CHEVROLET

### '87 2 & 4-DR. CELEBRITIES

BELOW N.A.D.A. PRICES!

PRICE INCLUDES BALANCE OF FACTORY 6-YEAR/60,000 MILE POWER TRAIN WARRANTY!

NADA

### EXTRA SPECIAL CLEARANCE!

Choose from a like new selection of 2-Door Coupes and 4-Door Sedans. All equipped with automatic trans. 2.5 liter Electronic Fuel Injection 4-cylinder engines, power steering, power brakes, power door locks, air condition, tint glass, body side molding, door guards, am/fm ETR stereo radio, tilt steering wheel, sport mirrors, white wall tires, wheel covers & cloth interior.

# \$8479

FIRST COME - FIRST SERVED!  
YOUR CHOICE!

Stk. No. 134 VIN 114207 18,502 mi.	Stk. No. 140 VIN 109157 17,768 mi.
Stk. No. 111 VIN 113742 18,753 mi.	Stk. No. 151 VIN 108352 16,566 mi.
Stk. No. 120 VIN 109528 25,009 mi.	Stk. No. 108 VIN 108608 20,912 mi.
Stk. No. 103 VIN 113158 26,075 mi.	Stk. No. 129 VIN 104640 14,045 mi.
Stk. No. 108 VIN 104636 27,382 mi.	Stk. No. 105 VIN 109262 22,171 mi.

### USED CAR SPECIAL CLEARANCE!

'87 MONTE CARLO LS SPT. CPE. Auto trans. 4.3 B. v-6, pwr. steering & pwr. windows, air cond., h. gls., am/fm stereo w/cass., sunroof, roof rack, w. w. tires, n. defog., split seats. VIN 101204. 8,041 mi.	'84 BUICK SKYHAWK LTD 4-DR. Auto trans. 4-cyl. EFI eng., wire whls., pwr. steering, w/cass., w/cass. pwr. door locks, 80 steer whl., cruise contr., 80 gls., air cond., n. defog., am/fm stereo w/cass. VIN 128047. 20,961 mi.
'86 CAVALIER CS 2-DR HATCHB. Auto trans. 4-cyl. eng., pwr. steer., pwr. brks., air cond., tint glass, am/fm stereo radio, w. w. tires. VIN 113290. 19,172 mi.	'83 CAPRICE CLASSIC WGN. Auto trans. w/overdrive, v-6 eng., pwr. steer., brks., door locks & pwr. windows, am/fm stereo, custom 2-tone paint, air cond., h. glass. VIN 143321. 49,258 mi.
'81 CHEV. IMPALA WAGON Auto trans. v-8 eng., pwr. steer., pwr. brks., n. defog., roof rack, w. w. tires, tint glass, air cond., radio. VIN 184799. 50,831 mi.	'84 BUICK REGAL LTD. CPE. Lexus red, v-6 eng., auto trans. w/overdrive, custom int., pwr. steer., brks., wire whls., pwr. door locks, 80 steer whl., cruise control, air cond., h. gls., am/fm stereo w/cass. & pwr. ant. w. w. tires. VIN 558129. 27,050 mi.

PRICES INCLUDE FREIGHT & DEALER PREP. EXCLUDE LIC. FEE & TAX. NOT RESPONSIBLE FOR TYPOGRAPHICAL ERRORS OR OMISSIONS.

ALL ROADS LEAD TO...

# LAIRD JOHNSON

## CHEVROLET

GM QUALITY SERVICE PARTS

GENERAL MOTORS CORPORATION

325 PARK AVE. RUTHERFORD

# 939-2500

Mr. Goodrich

## 4 SUPER DEALERSHIPS ON 7 BIG ACRES

# CITY MOTORS

## PONTIAC

# CITY MOTORS

## VOLVO

# CITY MOTORS

## HONDA

Civics, Accords, Preludes, CRX's, Hatchbacks, Sedans, Wagons

# CITY MOTORS

## STERLING

Front wheel drive, superb British craftsmanship, Honda V-6 engineering.

Rte. 21 11A at River Drive  
Passaic Park • 777-1600

Route 21 to Exit 11A River Drive Just 1 minute from Route 3

## Stay on top of the news...

# READ THE BELLEVILLE TIMES!



# You're Invited To Experience a Unique Dining Treat!!!

Everything on our menu is as fresh and delicious as can be...prepared to your order, served with a flair and priced to your delight! Join us!



The Nutley Sun  
Belleville Times  
Bloomfield Life

Orechio Publications & TV

Coming Soon!

## DINING OUT

A special page, to be published weekly, geared towards fine cuisine and as a guide for our readers ... the readership with one of the highest degree of purchasing power and discretionary income in Essex County.

With a 2 column x 2 inch ad, published for 13 consecutive weeks, at a cost of \$25.00 per week, you can reach this unique market. This page will appear in all three newspapers.

As a **special bonus** to you, the advertiser, we will publish, at no cost to you, a feature article on your restaurant, with a photo. Each advertiser will be featured once during the 13 week contract period.

**Don't Delay! Call Now And Reserve Space! Reach the READERSHIP THAT CAN & DOES BUY!**

**667-2100**

NUTLEY SUN

BELLEVILLE TIMES

BLOOMFIELD LIFE

NUTLEY SUN

BELLEVILLE TIMES

BLOOMFIELD LIFE

# CLASSIFIED

Your Ads Are Sure To Get Results

**667-3000**

Mon. thru Fri. 9:00 AM to 5:00 PM

Deadline — Tues. 12:00 Noon

## CLASSIFIED INDEX

CHECK YOUR AD THE FIRST DAY OF PUBLICATION. The Nutley Sun, The Belleville Times and The Bloomfield Life are responsible only for MAJOR errors in the first day's insertion.

**CREDITS**  
Credits and adjustments are to be made only for errors which significantly alter the effectiveness of the ad, such as a wrong telephone or price. Credits will be issued for typographical errors or misspelled words. The newspaper can assume responsibility only for MAJOR errors in the first day's publication.

All Classified Line Ads Appear In All Three Papers: The Nutley Sun, Belleville Times, The Bloomfield Life  
And Will Appear On **OBC TV** Channel 36/W During "The Community Bulletin Board" Time Frame

### 01 WHEELS

- 05 Auto Sales
- 06 Auto Insurance
- 07 Antique Car Sales
- 09 Autos Wanted
- 11 Campers/Trailers
- 13 Financing
- 17 Mobile Homes/Offices
- 19 Motorcycles/Bikes/Scooters
- 21 Parts, Accessories, Services
- 23 Rentals
- 24 Auto Wreckers

### 025 ANNOUNCEMENTS

- 25B5 Bids & Auctions
- 25B7 Business Notices
- 25E5 Entertainment
- 25G5 General Notices
- 26L5 Lost & Found
- 25P5 Personal Notices
- 25P7 Professional Notices
- 25P9 Public Notices

### 027 CHILD CARE

- 27B5 Baby Sitter
- 27N5 Nursery Schools
- 27P5 Pre-School

### 029 DIAL-A-SERVICE

- 29A2 Accounting/Taxes
- 29A3 Air Conditioning
- 29A5 Alarms
- 29A7 Ambulance Service
- 29A9 Appliance Repair
- 29A10 Art Instruction

- 29R5 Roofing
- 29R6 Van Roof Racks
- 29R7 Rubbish Removal
- 29S5 Seamstress
- 29S7 Security Dogs
- 29S9 Security Guards
- 29S10 Snow Plowing
- 29T5 Tailor
- 29T7 Taxi Service
- 29T8 Tile Contractors
- 29T9 Towing Service
- 29T11 Travel
- 29T13 Tree Service
- 29T15 TV & Video Rentals
- 29T17 TV & Video Repairs
- 29T19 Typing Services
- 29T21 Translations
- 29U5 Upholstery
- 29W2 Wall Papering
- 29W3 Wanted To Buy
- 29W4 Weddings
- 29W5 Weight Control
- 29W6 Windows

### 031 EMPLOYMENT

- 31C5 Clerical
- 31D5 Domestic
- 31E5 Executive/Administrative
- 31F5 Secretary
- 31E7 Employment Wanted
- 31G5 General Opportunities
- 31I5 Industrial
- 31P5 Part-Time Help
- 31P6 Professional
- 31R5 Restaurants/Club/Hotels
- 31S5 Sales
- 31T5 Trades/Technical

### 033 FINANCIAL

- 33B5 Business Opportunities
- 33B7 Business Wanted
- 33I5 Insurance
- 33L5 Loans
- 33P5 Partnerships/Dealerships
- 33F5 Franchise
- 33S5 Stocks & Bonds
- 33T5 Tax

### 035 INSTRUCTION

- 35A5 Arts & Crafts
- 35A6 Computer
- 35L5 Language
- 35M5 Misc. Instruction
- 35M7 Music/Dance
- 35P5 Photography
- 35S5 Schools
- 35T5 Tutoring
- 35V5 Vocational Training

### 037 MERCHANDISE

- 37A5 Antiques
- 37A7 Appliances
- 37A9 Articles for Rent
- 37A10 Articles for Sale
- 37A11 Articles Wanted

- 37B5 Bicycles
- 37B6 Boats
- 37B7 Building Material
- 37C5 Cameras
- 37C7 Coins/Stamp
- 37C9 Commercial Equipment
- 37C10 Crafts
- 37F4 Flea Markets
- 37F5 Free Articles
- 37F7 Furniture
- 37G5 Garage Sales
- 37H5 Heavy Equipment
- 37H7 Hobbies & Crafts
- 37J5 Jewelry/Apparel
- 37L5 Lawn/Garden
- 37M5 Musical Instruments
- 37O5 Office Equipment
- 37R5 Rummage Sale
- 37S5 Sporting Goods
- 37T5 TV/Radio/Stereo
- 37V5 Videos/Computers

### 039 PETS & LIVESTOCK

- 39F5 Free Pets
- 39L5 Livestock & Supplies
- 39L7 Livestock Wanted
- 39P5 Pet Announcements
- 39P7 Pets & Supplies
- 39P9 Pets Wanted

### 041 REAL ESTATE

- 41C5 Condominiums for Sale
- 41F5 Farms & Acreage
- 41H5 Houses for Sale
- 41I5 Industrial & Commercial Properties
- 41I7 Investment/Income Properties
- 41P5 Property Management
- 41R5 Real Estate Wanted
- 41R7 Realtors/Brokers
- 41R9 Consultants/Appraisers
- 41R9 Residential & Commercial Lots
- 41T5 Townhouses for Sale

### 043 RENTALS

- 43A5 Apartments/Furnished
- 43A7 Apartments-Unfurnished
- 43A8 Condos for Rent
- 43C5 Commercial/Business Properties Wanted
- 43C7 Com./Bus. Rentals
- 43G2 Garage for Rent
- 43G4 Garage/Wanted
- 43H5 Hotels/Guest Houses
- 43H7 Houses/Furnished
- 43H9 Houses-Unfurnished
- 43I5 Industrial Rentals
- 43O5 Office Rentals
- 43R5 Rentals to Share
- 43R7 Resid. Rentals Wanted
- 43R9 Rooms
- 43S5 Short-Term Rentals
- 43S7 Storage/Warehouse
- 43T5 Trailer Rentals
- 43V5 Vacation Rentals

### 05 AUTO SALES

**BELLEVILLE YELLOW CAB**  
OUT-OF-TOWN TAXI SERVICE-ANYWHERE  
DEPENDABLE SERVICE  
759-2000 12-29/88

CADILLAC, 1983, 2-dr Coupe De Ville. Brn-haze, 1 owner, gar kept, mint cond., Int. brn leather, all power, fully loaded, cruise, rear window defrost, 50,000 miles. Call 10-5 p.m. 759-6900, aft. 6 p.m.: 759-7676.

1973 Cadillac Formal Limo p/s, p/b, air, AM/FM, jump seats, new tires. Best offer. Call anytime: 743-8757 and leave message.

1986 Jeep Cherokee 4 x 4 Pioneer pkg. Low miles. P.S., P.B., Air. Asking \$12,000. 235-1258

1976 Toyota Corona small wagon. Good running cond. \$250. Call eves. 746-8162 or 783-3174.

1984 Sabaru DL, 5 spd, Excel. cond. 1 owner, 43,000 miles. \$4,200. John 235-5532/228-4561

### 06 AUTO INSURANCE

743-5582 INCOME TAX

Thomas Delaney

**Delson Associates**

AUTO INSURANCE CENTER

CHECK OUR RATES

Immediate Coverage - Minimum Down Payment  
Mon-Friday, 10 a.m.-5 p.m. - 7 p.m.-8:30 p.m.  
Saturday 10 a.m.-3 p.m.  
138 BLOOMFIELD AVE. BLOOMFIELD 12-29/88

**BIB'S** ATTENTION! AUTO PARTS

WILL PAY CASH FOR ANY JUNK CAR IN ANY CONDITION  
Highest prices paid for late models.  
USED CARS & TRUCKS 12-29/88

USED PARTS 991-4246 or 991-0081 54 Stover Ave., Kearny USED PARTS

### 05 AUTO SALES

'69 CAMARO, 327, 4 speed, 12 bolt rear, 292 turbo heads, Manley pro flow valve, Vasco jet triple spring, crane cam, screw in studs, guide plates, Jomar stud circle, Crane roller rocker, Russel steel braided lines, 513 Sheaffer gears, Strange axles, C clip eliminators, 6 point roll bal., 2 Moroso buckets, aluminum interior, new paint job, too much to list. Must sell, no reasonable offer refused. 340-4049, or 365-2226.

1952 PLYMOUTH - 4 dr. Cranbrook, \$1,000, garage kept. - 1980 PLYMOUTH Horizon, 4 dr., needs trans work, \$1,000. 56,000 mil. Call Stanley 667-4351

1978 Buick Century 2 door, automatic, 6 cyl. P.S., P.B., A/C, 68,000 mil. \$800, call after 6 p.m. 751-2750

1980 VW RABBIT GOOD COND. \$600. 4 spd. Call betwn 4 & 9 893-1325

CHEVY 10 closed Van, 1979 good cond. Best offer. 235-0345

CAMARO '81, 59,000 mil. tilt wheel, Chapman lock cruise control, AM/FM, A/C, asking \$3800. 450-0874

### 05 AUTO SALES

1979 Alpha Romeo Sprint. Ready to restore. near \$2000. Tom 284-1540

CUTLASS SUPREME 1975, good condition, asking \$700. 759-0758

### 21 PARTS, SERVICES ACCESSORIES

MODERN AUTO PARTS

Open 7 Days  
8:30 - 5:30 Weekdays  
9:00 - 1:00 Sundays  
PARTS • PAINTS • MACHINE SHOP  
Mechanic on Duty 6 Days  
DISCOUNT PRICES  
82 Rutgers Street  
Belleville 759-5555 12-29/88

### 24 AUTO WRECKERS

JUNK CARS WANTED - Free Tow Away  
Same Day Pick-Up  
S.O.S. TOWING, Inc.  
429-8411 ..... Bloomfield  
481-2610 ..... Newark 12-29/88

### 29L5 LOST & FOUND

LOST PASSBOOK No. 012302000022635. First Fidelity Bank, Nutley Midtown office. Payment stopped, return book to bank.

### OBC TV Channel 36!

21 PARTS, SERVICES ACCESSORIES

FREE TOWING & ROAD TESTS

**Kirk's** AUTOMATIC TRANSMISSIONS INC.

STANDARD & AUTOMATIC 4 WHEEL DRIVE TRUCKS & CARS 12-29/88

FREE ESTIMATES

998-9666

(Across from North Arlington Diner)  
20 RIVER ROAD, NORTH ARLINGTON

### 25P5 PERSONAL NOTICES

**PRAYER OF APPLICATION TO THE HOLY SPIRIT.**  
Holy Spirit you who solve all problems, who light all roads so that I can attain my goal. You who give me the Divine gift to forgive and to forget all evil against me and that in all instances of my life you are with me. I want this short prayer to thank you for all things and to confirm once again that I never want to be separated from you, even in spite of all material illusion. I wish to be with you eternal Glory. Thank you for your mercy toward me and mine. The person must say this prayer for 3 consecutive days. After 3 days the favor request will be granted even if it may appear difficult. This prayer must be published immediately after the favor is granted without mentioning the favor, only your initial should appear at the bottom. D.L.

### 25P5 PERSONAL NOTICES

**DO IT YOURSELF DIVORCE KIT**  
Monday-Friday 9-5 4/13  
(201) 782-5540

A Wonderful Family Experience. Australian, European, Scandinavian High School Exchange Students arriving in August. Become a host family for American Intercultural Student Exchange. Call 1-800-SIBLING.

### 27B5 BABY SITTER

— Baby Sitter —  
Returning to work? Reliable, exp. mother available to care for your child in my Nutley home. Full or part time. 661-0206. 1/28

### 27N5 NURSERY SCHOOLS

**Sandy Lane Nursery School**  
"Child's World Where Playing Is Learning"  
834 Mill Street  
Belleville 751-6380

Days and hours to meet your needs  
HOURS: 7:30-4:55  
Call or come in to register  
School open to visitors  
Development Programs in  
• Arts • Music • Story  
• Language • Social Development  
Continuous day care programs for working mothers  
Nutritionally balanced Lunch  
State Licensed Certified School & Teachers  
**ACCEPTING FALL REGISTRATIONS NOW**  
Dedicated to a program of Early Childhood Education 12-24-87

### OBC TV Channel 36!







**31E5 EXECUTIVE/ADMINISTRATIVE**

Busy Gateway law firm seeks exp. secretary for interesting diversified position. Looking for energetic enthusiastic person. Sal neg, med bnfts, 622-8200 for interview.

**BLOOMFIELD** - Attorney's Office seeks exp. Litigation Legal Sec. for partners. Bnfts, sal comm. Call Grace 743-1901

**LEGAL SECRETARY** to work for construction co. Must be familiar with word processor, legal experience and/or general construction experience helpful. Modern office, good opportunity for indiv. wanting to work in small office. Call Dennis 998-0252

**NUTLEY LAW FIRM** seeks secretary. Legal experience preferred but not essential. Excellent typing, dictaphone & telephone skills a must. Salary commensurate w. experience. Call Lisa 661-9402 for interview appt.

**SECRETARIAL** Bloomfield Law Office seeking secretary. Legals exp. essential, typing & light sten. sal comm. with skills & exp. Call: 748-2900

**SECRETARY** For construction company. Full time. Exp. nec. Call for appt. 751-4752.

**ASSISTANT. LEGAL** P/T very active Bonding Co. seeks mature minded indiv. to assist claims manager. Must have a legal background. Contact Mary at 661-1576.

**31E7 EMPLOYMENT WANTED**

**HOUSEKEEPING** \$50/day. Reliable. Efficient. Excl. refs. Own trans. 450-0782

A woman seeks house-cleaning job. Experienced. Call after 5:30. 677-9741

**31E5 GENERAL OPPORTUNITIES**

**DENTAL ASSISTANT** F/T. No experience necessary, willing to train right person. Nutley office. 661-1075.

**BANK TELLERS**

Full & Part Time **MONEY** If you can count it...you can count on it at Carteret Savings Bank! That translates into a top salary PLUS...for full timers - **EXTRA MONEY** from our generous profit sharing plans (eligibility after 1 year) along with 100% assistance toward your educational goals.

If you have 1+ year's experience and want a solid opportunity to really cash in on your background and to move ahead, check out Carteret.

**OPENINGS EXIST IN:** Lyndhurst Branch So set up a convenient appt Call Missy Senton (201) 515-2172

**CARTERET SAVINGS BANK** When you're banking to win Equal opportunity/affirmative action employer

**MAILROOM CLERK**

Lively spot has two striking differences

Busy, fast paced job at Essex Chemical Corporation keeps you on the move, delivering mail to several separate buildings in Clifton. You'll need a car and valid NJ driver's license to handle the work. There's more. We'll train you to upgrade our Dimension phone system, so that you can stand in for our switchboard operator periodically. You'll learn something new while doing the things you know. Mailroom experience preferred, but will train the right person. Good pay, excellent benefits. To apply, call: Marion Gizaola.

(201) 773-2643

**ESSEX CHEMICAL Corporation** 401 Broad Street Clifton, NJ 07015 Equal opportunity employer M/F

**MALE PREFERRED**, 21 years & older to work for local scrap metal firm. Must have license and be able to drive straight job truck. Call for details and appt. Bob Schmitt: 403-8945 or 481-4166

**31E5 GENERAL OPPORTUNITIES**

**BILLING ASSISTANT** - Clifton Co. seeks energetic person with good typing & comm. skills for a fast-paced office with diversif. duties, good benefits. Salary commensurate w. exper. Champion Plastics. 777-9400

**SHIPPING/RECEIVING CLERK** Local Manufacturer seeking dependable candidate for F/T, days position; good benefit package. Call 748-4880 for an interview.

**Danco Manufacturing** (Division of Amin & Co.) 88 Llewellyn Ave., Bldg. NJ EOE M/F 1/28

**EXP. HAIRDRESSER WANTED WITH FOLLOWING FULL OR PART TIME. MOD SALON IN NUTLEY. CALL BETWEEN 10 & 7. TUES. THRU SAT. 284-0926** 1/21/88

**ALL PHASE EMPLOYMENT SERVICE** 382 Franklin Ave. Nutley, N.J. 661-W-O-R-K 997-W-O-R-K Permanent & Temporary F/T and P/T positions Vacation Plan. Register Immediately 12/29/88

**MEDICAL SECRETARY EXPERIENCED FULL TIME** Call 235-1400.

**CARPENTERS** Exp. nec. Must have own tools & trans. Steady work, good pay. Apply: 309 Cortlandt St., Belleville. 10 a.m. - 12 p.m.

**LABORER/DRIVER** For construction company. Steady work. Apply: 309 Cortlandt St., Belleville. 10 a.m. - 2 p.m.

**Easy Work! Excellent Pay! Assembly products at home.** Call for information. 1-312-741-8400 Ext. A-837

**TEACHERS AIDE** Are you energetic, loving & looking for a P/T position working w/children. Call 746-6455

**ACCOUNTS PAYABLE**, responsible person needed to fill A/P position. A/P experience a must. CRT experience helpful but not necessary. We are a growing company with excellent benefits. Call Fran for appt. 481-5545.

**MACHINE SHOP BELLEVILLE RESIDENCE ONLY** FREE training to qualified applicants. Will train you to operate C&C equipment. Good positions after training. Excellent for local residence only. Call Bill Martin, 759-8627. 1/21

**GENERAL FREIGHT HAULING** Commercial Transport needs owner/operators! If you need training, we will train you. You will operate your own tractor. If you don't have one, Commercial Transport offers a purchase program that we think is one of the best in the industry. If you are 21 or over and think you may qualify, call for a complete information package: Call weekdays: Toll Free 1-800-348-2147 ask for operator 299 Caomercial Transport is a division of north American Van Lines, a Norfolk Southern Corporation subsidiary.

**DENTAL OFFICE** Manager/Receptionist. Quality prevention oriented office seeks mature person with experience. No Saturdays. Benefits. Salary commensurate w. experience. Call 235-9440.

Turn Fat into Dollars. I lost 26 lbs. in Dec. and made money doing it. Doctor recommended. Fast & Easy. Call Donna or Jill 1-303-773-8205.

**NURSE'S AIDES JOBS IN NUTLEY FREE TRAINING** Become a State Certified Home Health Aide with Unlimited Care Nursing Service in Clifton. Classes start Feb. 8 for 2 weeks only. We offer: TOP PAY BONUS PROGRAMS HEALTH INSURANCE & OTHER EXTRAS. Call now, limited seating 772-1114 1/28

**KEYPUNCH** Experienced. We have several openings for experienced keypunch operators. Full time-art work. Min. 25 hours per week. Day or evening shifts. Call Mary King for appt. 991-3000 ext. 35.

**31E5 GENERAL OPPORTUNITIES**

**LIGHT FACTORY** work in name plate co. Unilate Corp., 681 Main St., Belleville. 759-6017.

**PURCHASING** Immediate opening for person with purchasing experience. Diversified duties include: telephone purchasing/file maintenance/typing quotes/requisitions/P.O.'s. A CRT background a plus. Pleasant working conditions with competitive salary & benefits. Call 997-1000.

**JOHN'S II DELI** 1290 BROAD ST. BLOOMFIELD. Good Starting Salary 338-5759

**GAL/GUY FRIDAY/BOOKKEEPER.** Full time. 8 am - 5 pm. Mature person preferred. Windheim Plumbing, 420 Franklin Ave., Nutley. Call 667-6886 for interview appt.

**CAFETERIA WORKER PART TIME**

Positions for general helpers in industrial cafeteria. Must be capable of adding figures accurately & rapidly & working a cash register. Congenial atmosphere. Call: W.W. Reinhold for appt. (201) 759-8000

Wallace & Tiernan Div. PENNWALT CORP. 25 Main St., Belleville, N.J. 07109 Equal Opportunity Employer M/F

**EXP. MANICURIST WANTED WITH FOLLOWING FULL OR PART TIME. MOD SALON IN NUTLEY. CALL BETWEEN 10 & 7. TUES. THRU SAT. 284-0926** 1/21/88

**RETIRED MACHINIST** to do general machine work at home. Call Howard Walsh at 661-2600 1/28

**CARPENTER WANTED** Must have exp. own tools. Bnfts. supplied, work w/established co. Call after 6 PM. 661-4830.

**WAREHOUSE WORKERS TEMPORARIES**

Immediate positions open for all phases of light industrial work in the Essex County area. Own car transportation a must. Call today.

West Caldwell 882-7776 Bloomfield 748-7561 Equal Opportunity Employer M/F/H/V

**Auto Parts Driver.** Good bnfts. Apply in person. Sally's Auto Parts 75 Franklin Ave., Nutley 667-8305

**DRIVER/YARD PERSON** needed for ever expanding lumber yard. Great opportunity for responsible person, good starting salary, great benefits. Please call Don Plaxe for appt. 743-7300.

**DRIVER/ MESSENGER** dependable person needed for deliveries pickups. NY/NJ area. Co. car, must have valid NJ drivers lic. Call for appt. 991-3000 ext. 35 Mary King 1/28

**CLERK/ TYPIST**

Growing company seeks eager person with excellent typing skills and pleasant telephone manner. Salary commensurate with experience. We offer company benefits and pleasant working conditions. Easy access to Route 280. Call: 672-1481

**DRIVERS** Age 19 & over. If you wish to start a new career in a national co. Excl. bnfts, sal. incentive program. Oppty to adv. to mgmt. Call 759-4444 Paula 1/20

**HELP WANTED** for busy Montclair delicatessen, full or P/T week-days or week-ends. Flexible hours, no experience necessary. 744-1271, Dobby or Pat

**PART TIME TELEPHONE WORK** \$7-\$15 per hour

**START IMMEDIATELY! NO EXPERIENCE NECESSARY!** We will train you to make appointments for our sales reps. Steady work, Mon. thru Fri. 6-9 pm. Salary \$7 an hour... in addition, bonuses of \$15 plus an hour.

**FOR IMMEDIATE INTERVIEW: APPLY IN PERSON OR CALL 9 AM-9 PM DAILY** 1/28

Join Aisco, One of America's Largest Replacement Window Companies. 10 PASSAIC ST. WOOD-RIDGE 843-4444

**31E5 GENERAL OPPORTUNITIES****NURSES AIDES**

Full Time 3 pm - 11 pm 11 pm - 7 am

Clara Maass Medical Center is seeking caring and attentive individuals who qualify as a Nurses Aide. We offer an energized working environment with a great support staff and good salaries. Experience in medical setting would be a real plus, state certification preferred but not required.

For details, please call Maureen Villane, Recruitment Retention Coordinator at 450-2288.

**Clara Maass Medical Center** One Franklin Avenue Belleville, NJ 07109 Equal Opportunity Employer

**\$\$\$ need extra money for Christmas** Sell Avon. Join now! Don't miss special \$5.00 fee. Call Claire 429-0301 6/23/88

**31P5 PART-TIME HELP**

**DRIVERS** Homemakers, retirees, seniors Good Salary P/T Driving school buses/van Bus 1 or 2 license a plus 998-4800

**DRIVER** - Woman pref. Knowledge of area helpful. Excellent salary. Flexible P/T hours. Call 661-1111.

**P/T DEMONSTRATORS** Needed for product introductions & food sampling in local stores. Work close to home. Flexible hrs. Perfect for housewives, retirees, college students. Must like working with people. Sounds interesting? Contact Camille Trufelos 751-0602

**P/T OFFICE HELP** 9:00 - 1:30, Mon.-Fri. Lt. Bookkeeping, typing, cust. serv. Salary \$120. Call betw. 2 - 3 p.m. 284-0110

**MODELS** Pre-teens to mid 20's for national cover. COVER GIRLS STUDIO 261-2042 as seen on National TV 22

Responsible, organized, mature-minded person to work Mon. Wed. & Fri. 9 to 1 pm & 2:30 to 8:30 pm in chiropractor's office. Committed person only need apply. Please call 759-3600.

**Medical Assistant** Full Time Call Phyllis or Cathy 751-0397

**31E5 HOTELS RESTAURANTS CLUBS**

**WAITER/WAITRESS** Country Club seeking responsible staff for full or part time positions. Good pay & bnfts. Call Manny for interview. 743-1326. Wed. - Sun. after 11 a.m.

**COOK (2nd) (SOUS CHEF)** Person must be creative reliable, exp. for Country Club. Call 743-0520. Ask for Bobbie.

**31E5 SALES**

**WANTED** full time inside sales trainee. No traveling. Small electronic firm. College preferred. No experience necessary. Will train. Good starting salary & benefits. Send resume to: P.O. Box 271 Nutley, N.J. 07110 1/14/88

**31P5 PART-TIME HELP**

**SELECT** aged hard wood. Cut, split, delivered. \$75-100 half cord \$135- full cord. 744-9102

**100 feet heavy gauge aluminum fence** 4 ft. high, never used. \$150. Call 751-3699 after 4:30 p.m.

**37A11 ARTICLES WANTED** USED TV'S BOUGHT CALL 12/29/88 673-3845

**REAL ESTATE SALES** Part time/full time, licensed real estate salespeople. Flex. hours, evenings & weekends for new, modern busy office. Excellent commission package avail. for top producers. Experienced or will train. Call for confidential interview.

**SAGE REALTORS** 284-1666

**REAL ESTATE SALESPERSONS AND BROKERS** License classes now forming

**AMERICAN SCHOOL OF REAL ESTATE** 642 Bloomfield Ave. Verona For information call 239-1215 or 239-1244 CALL FOR FREE BROCHURE 12/29/88

**33B5 BUSINESS OPPORTUNITIES** 1000 SUNBEDS TONING TABLES. Sunal - Wolff Tanning Beds, SlenderQuest Passive Exercisers. Call for Free Color Catalogue. Save 50% 1-800-835-3826.

**Cedar Run** - Business with busy breakfast, brunch and lunch. Presently a general store, bait & tackle shop, 3 bathrooms, 7 rooms, lg. kitchen, mod. equipmt. Ask \$239,000. Ask for Martha at 1-609-597-2323. Century 21 Parade of Homes, Realtor.

Own your own apparel or shoe store, choose from: Jeans/sportswear, ladies, men's children/maternity, large sizes, petite, dancewear/aerobic, bridal, lingerie or accessories store, and color analysis. Brand names: Liz Claiborne, Healthtex, Chaus, Lee, St. Michele, Forenza, Bugle Boy, Levi, Camp Beverly Hills, Organically Grown, Lucia, over 2000 others. Or \$13.99 one price designer, multi tier pricing discount or family shoe store. Retail prices unbelievable for top quality shoes normally priced from \$19. to \$60. over 250 brands 2600 styles. \$17.90 to \$29.90: inventory, training, fixtures, air, fire, grand opening, etc. Can open 15 days. Mr. McComb 1-612-888-5228.

**31E5 SALES**

**REAL ESTATE SALES** Part time/full time, licensed real estate salespeople. Flex. hours, evenings & weekends for new, modern busy office. Excellent commission package avail. for top producers. Experienced or will train. Call for confidential interview.

**SAGE REALTORS** 284-1666

**REAL ESTATE SALESPERSONS AND BROKERS** License classes now forming

**AMERICAN SCHOOL OF REAL ESTATE** 642 Bloomfield Ave. Verona For information call 239-1215 or 239-1244 CALL FOR FREE BROCHURE 12/29/88

**33B5 BUSINESS OPPORTUNITIES** 1000 SUNBEDS TONING TABLES. Sunal - Wolff Tanning Beds, SlenderQuest Passive Exercisers. Call for Free Color Catalogue. Save 50% 1-800-835-3826.

**Cedar Run** - Business with busy breakfast, brunch and lunch. Presently a general store, bait & tackle shop, 3 bathrooms, 7 rooms, lg. kitchen, mod. equipmt. Ask \$239,000. Ask for Martha at 1-609-597-2323. Century 21 Parade of Homes, Realtor.

Own your own apparel or shoe store, choose from: Jeans/sportswear, ladies, men's children/maternity, large sizes, petite, dancewear/aerobic, bridal, lingerie or accessories store, and color analysis. Brand names: Liz Claiborne, Healthtex, Chaus, Lee, St. Michele, Forenza, Bugle Boy, Levi, Camp Beverly Hills, Organically Grown, Lucia, over 2000 others. Or \$13.99 one price designer, multi tier pricing discount or family shoe store. Retail prices unbelievable for top quality shoes normally priced from \$19. to \$60. over 250 brands 2600 styles. \$17.90 to \$29.90: inventory, training, fixtures, air, fire, grand opening, etc. Can open 15 days. Mr. McComb 1-612-888-5228.

**DINETTE** set, glass table, 4 velour chairs \$400. 1 year old, excellent condition. Black laquer bedroom set 1 year old. Built-in stereo in head board, excellent condition \$3500. Best offer. 450-4981, aft. 7 p.m.

**USED DESK - CHAIRS** FILING CABINETS EDELSTEIN OFFICE FURNITURE, WHSE. 946 Market St. Paterson (Cor. Lakeview Ave. & Rt. 80) 12/29/88 523-6153

**Bachelor Chest** - Austrian Mahogany, 1950's excl. cond. Custom glass top. 1 cedar lined drawer. Must see! Call 667-8565 aft. 6 pm

**VIDEO STORE** BELLEVILLE - good lease, VHS movies, current releases, transient loc. Must sell. Asking \$3,900.

**CASALE REALTOR** AGENCY 751-2300

**35M5 MISC. INSTRUCTION** PIANO SAX CLARINET instruction. All children and beginning adults, 235-9268 aft. 4:00 (Frank)

**35E5 SCHOOLS** Train to be a **TRAVEL AGENT TOUR GUIDE AIRLINE RESERVATIONIST** Start locally, full time/part time. Train on live airline computers. Home study and resident training. Financial aid available. Job placement assistance. National Hdqtrs. Lighthouse PL, FL. A.C.T. TRAVEL SCHOOL 1-800-327-7728 Accredited member N.H.S.C.

**37A10 ARTICLES FOR SALE** HALF PRICE! Save 50%! Best, large flashing arrow sign \$299! Lighted, non-arrow \$289! Unlighted \$249! Free letters! See locally. Call today! Factory direct: (800)423-0163, anytime.

**WANTED USED AIR CONDITIONERS** CASH 482-3681

Select aged hard wood. Cut, split, delivered. \$75-100 half cord \$135- full cord. 744-9102

**37A11 ARTICLES WANTED** USED TV'S BOUGHT CALL 12/29/88 673-3845

**HOUSE SALE** - BR set, wall units, beer can collection, telephones, stereos, TV, sewing machine, bikes, attari, child tables/chairs, swing, tired, kitchen set, much more. Call 235-0050 Sat/Sun, 12-4, 123 Cedar St. off Bloomfield Ave., Nutley.

**HOUSE SALES** JANUARY 22 & 23, 9 to 4 MANY "BIG" ITEMS BELLEVILLE: 103 Mt Prospect Ave. 109 Union Ave. BLOOMFIELD: 185 Thomas St.

**37F4 FLEA MARKETS** CRAFT SHOW & FLEA MARKET Franklin Reform Church Church & Prospect Sts., Nutley. 667-7022 Feb. 6, 9 - 5 p.m. Open to the Public. Dealer space avail. Inquiries invited. Crafts, homend. items, baked goods, collectibles, baseball cards, jewelry, floral arrangements, etc. 2/4

**37M5 MUSICAL INSTRUMENTS** PIANO & ORGAN WAREHOUSE SHOWROOM For the largest Piano and Organ Dealer on the East Coast NEW, USED FLOOR MODELS, DEMOS 15 NATIONALLY FAMOUS BRANDS Over 300 Catalogued Instruments Guaranteed Lowest Prices Used Planos and Organs from \$99 Rental Purchase Plan Available Call, or see Ed Borgia 744-1200 1/28

**GOVERNMENT HOMES** from \$1 (w/repair). Delinquent tax property. Repossessions. Call 1-805-687-6000 Ext. GH-7100 for current repo list. 1-21-88

**APARTMENT FOR RENT:** Nutley 2 bedroom; ultra modern, 2 1/2 baths; secluded in park with common terrace; NY bus convenience; \$1250 per month plus heating. 667-1024 days

**ATTENTION LANDLORDS!!** Apartments Wanted We Screen all Prospective Tenants No Fee To Landlord COSTANTINE REALTY 289 Franklin Ave. Nutley, N.J. 667-7070 12/29/88

**APARTMENTS WANTED ATTENTION LANDLORDS!** We have many qualified tenants that are screened and waiting for apartments or homes. You can choose that special tenant at no cost to you. For information call Tony Grande

**MARZULLI REALTORS** 264 Belleville Ave. Bloomfield, N.J. 743-2306 12/29/88

**37A11 ARTICLES WANTED** USED TV'S BOUGHT CALL 12/29/88 673-3845

**Div. of Altenberg Piano House, Inc.** 507 BLOOMFIELD AVENUE, MONTCLAIR

**37A11 ARTICLES WANTED**

**GUN COLLECTOR** Lic. 234. Wants to buy for cash. Guns, Swords, Daggers, Bayonets. Especially Military Items. Registered Appraiser All transactions confidential Call 783-6145 12/29/88

**LIONEL AND OTHER TRAINS CRAZY COLLECTOR PAYS TOP PRICE.** CALL 334-8709 or 635-2058 12/29/88

**I'M BUYING TOOLS** Old, Used, Any Type, Any Quantity. Call "Gene" 696-4908 4-6 p.m. 438-7413 Days excepting Sunday & Monday. 12/29/88

**37F7 FURNITURE** FOR SALE - Brass & glass dinette set \$165. 1 pr. Rattan end tables, \$55. Exercise bike \$80. Art deco lamps, \$25 ea. Cassette/record player stereo \$225. Call for info. 667-9254, aft. 6 pm.

**Oatmeal & cream sofa** \$175, orig. \$600. Cream laquer coffee table & end table \$250 for the pair, orig. \$800. Black & brass etagere w/glass shelf \$45, orig. \$125. Call 284-1540 leave message.

**BUNK BEDS. ALL WOOD. COMPLETE WITH MATTRESS.** \$149. CALL 991-0327. 7-21-88

**BEDROOM-5 PIECE, LIVING ROOM. BOTH ARE NEW.** \$295. CALL 991-0755. 7-21-88

**Dinette set, glass table, 4 velour chairs \$400.** 1 year old, excellent condition. Black laquer bedroom set 1 year old. Built-in stereo in head board, excellent condition \$3500. Best offer. 450-4981, aft. 7 p.m.

**USED DESK - CHAIRS** FILING CABINETS EDELSTEIN OFFICE FURNITURE, WHSE. 946 Market St. Paterson (Cor. Lakeview Ave. & Rt. 80) 12/29/88 523-6153

**Bachelor Chest** - Austrian Mahogany, 1950's excl. cond. Custom glass top. 1 cedar lined drawer. Must see! Call 667-8565 aft. 6 pm

**VIDEO STORE** BELLEVILLE - good lease, VHS movies, current releases, transient loc. Must sell. Asking \$3,900.

**CASALE REALTOR** AGENCY 751-2300

**35M5 MISC. INSTRUCTION** PIANO SAX CLARINET instruction. All children and beginning adults, 235-9268 aft. 4:00 (Frank)

**35E5 SCHOOLS** Train to be a **TRAVEL AGENT TOUR GUIDE AIRLINE RESERVATIONIST** Start locally, full time/part time. Train on live airline computers. Home study and resident training. Financial aid available. Job placement assistance. National Hdqtrs. Lighthouse PL, FL. A.C.T. TRAVEL SCHOOL 1-800-327-7728 Accredited member N.H.S.C.

**37A10 ARTICLES FOR SALE** HALF PRICE! Save 50%! Best, large flashing arrow sign \$299! Lighted, non-arrow \$289! Unlighted \$249! Free letters! See locally. Call today! Factory direct: (800)423-0163, anytime.

**WANTED USED AIR CONDITIONERS** CASH 482-3681

Select aged hard wood. Cut, split, delivered. \$75-100 half cord \$135- full cord. 744-9102



**41H5  
HOUSES FOR SALE**

**OWNER ANXIOUS**  
Offers wanted on this 5 rm ranch, 24 yrs. young, 1 g liv rms, din rm, 2 bdrms, mod eat-in-kt, fin bsmt with laundry & lav, deep lot, conv loc. Don't miss this deal!

**CARL A. ORECHIO**  
**AGENCY**  
667-7733  
Eves: Mario 667-8189

Smithville - New construction Cape Cod home to be built on large wooded lot. This home will feature 3 bedrooms, 2 baths, den, attached garage, economic gas heat & central air make this cedar sided house an excell. value at only \$154,900. Call 609-361-5200 or toll free in NJ 1-800-322-9901. Castle Realty Associates.

Long Beach Island vinty. Day Real Estate's low innovative fee structure attracts serious Sellers and Knowledgeable Buyers. We don't just list, we sell! Adult community condo overlook, lake, sunroom, maintenance free, \$82,000. For inquiries call Toll Free in NJ 1-800-445-SOLD. Realtor.

Manahawkin Waterfront - Don't miss the boat - be ready for the sun and fun days ahead in this 3 bedroom ranch on lagoon w. new bulkhead. Woodburn, stove, new carpet, & gas heat. A lot to offer at \$139,900. Call today. Castle Realty Assn. toll free in NJ 1-800-582-7631 or eves, 1-609-597-5200.

**41R5 REAL ESTATE  
WANTED**

**WANT TO BUY A  
ONE FAMILY  
HOME  
NUTLEY AREA.**  
to 6 bedrooms on oversized lot. Min 150' deep.  
P.O. BOX 587  
NUTLEY, NJ 07110  
6-23-88

**41R9  
RESIDENTIAL LOTS**

Mystic Island - Bulkhead Beauty! Waterfront lot in excel. location on deep water lagoon. 50x100 lot. Feat. a brand new deck (6x50), \$89,900. Ask for Louis at 1-609-494-3600. Century 21 Parade of Homes Realtor.

**43A7 APARTMENTS  
UNFURNISHED**

**BLOOMFIELD, 5 rm**  
apt. in 2 fam house, 2 bdrms, mod, carpeted, quiet neighborhood. \$725 & util. Avail immed. Call 429-9885

Belleville - Greylock Parkway 1st flr. mod. 2 family, lg. eat-in kit., living rm., 2 bedrooms, mod. tile bath, family rm., included are self-cleaning oven, wall/wall, a/c, washer dryer hookup, 1 car garage, w/electr. opening, exclusiv. backyard privileges. \$850 a month plus utils. 1 1/2 mo. security. 1 child o.k. Avail. 3/1. Call 759-6516.

Belleville. 5 large modern rooms, heat & hot water included. \$725. Call: 751-5157 aft. 6 p.m.

**NUTLEY - Modern 3**  
room apt. w/garage for rent. Supply your own heat, avail. Feb. 1 - \$550. 661-2872

**BELLEVILLE, avail. now.**  
3 rooms incl heat/H/W, refrig, washer, A/C, first floor, off street parking. \$525, call weekends or aft. 5:30 pm. 450-0757. Must see

**BELLEVILLE  
GARDEN APTS.**  
1/2 MO. FEE  
3 1/2 rms.  
Feb. 1, \$560

3 1/2 rms avail immed.  
from \$576. incl. utils.  
**CLIFTON**  
2 BR Townhouse.  
Avail. immed. \$1,000  
per mo.  
Call Patricia Assoc.  
284-0900

Belleville/Newark Line  
NO FEE NO FEE  
5 rms, 10 yr old 2 fam.  
Ultra mod kit & bath. Vac.  
cant. \$750 incl h&h/w.  
**GLENWOOD  
REAL ESTATE**  
429-7380

**NUTLEY - 3 room apt.**  
avail. Feb. 1, \$550 incl.  
heat, hot water, gas.  
751-7814

**NUTLEY**  
3 rms, \$550 & util.  
3 rms, \$550 h&h/w incl.  
4 rms, \$650 h&h/w incl.  
3 rms, \$650 h&h/w incl.  
**BELLEVILLE**  
4 rms, \$475 h&h/w incl.  
3 rms, \$625 all util. incl.  
4 rms, \$650 h&h/w incl.  
5 rms, \$700 & util.  
**BLOOMFIELD**  
3 rms, \$425 h&h/w incl.  
3 rms, \$500 h&h/w incl.  
3 rms, \$550 all util. incl.  
5 rms, \$700 h&h/w incl.  
6 rms, \$750 & util.  
**PASSAIC PARK**  
4 rms, \$650 h&h/w incl.

**COSTANTINE  
REALTY**  
Realtor 667-7070

**43A7 APARTMENTS  
UNFURNISHED**

**BELLEVILLE - 1 BR**  
studio, H/HW incl. stove  
& refrig. \$385. Avail. 2/1.  
Call 533-1627.

**BLOOMFIELD, 3 room**  
apt., heat, h/w, near bus &  
train, single or busn. couple  
pref. Avail. immed. \$450  
after 6 p.m. 429-8939

Nutley, 4 room apt. 1  
B/R, washer-dryer, w/w  
carpet, absolutely  
gorgeous. \$895 mo. +  
util. Avail immed. No  
pets. 661-1615 after 6,  
Mike

**BELLEVILLE: 3 1/2 & 4 1/2**  
large ultra mod rooms  
with w/w carpeting. Heat  
& hot water supplied.  
Laundry facilities on  
premises. Parking space.  
Call 759-8379 21188

**NUTLEY - 4 rms, \$790.**  
H&H/W incl. 2nd fl. vacant  
**BELLEVILLE - 5 rms,**  
\$650. H&H/W incl. 1st fl.  
vacant.

**PILGRIM REALTY**  
759-3349

**BELLEVILLE**  
3 1/2 gorgeous rms, refrig,  
stove, A/C, carpet. Avail  
Feb. 1, \$560 & util.  
**BELLEVILLE**  
Bsmt studio garden.  
Refrig, stove, \$410 all util  
incl. Avail. Feb. 15.  
**BLOOMFIELD**  
Studio, 2 rms, H/HW,  
refrig, stove. Avail Feb. 1,  
\$450.

Call Realtor  
★  
**MARZULLI**  
264 Belleville Ave.  
Bloomfield, N.J.  
Realtors 743-2306

**GLEN RIDGE  
STUDIO**  
Mod. elev. bldg., H/HW,  
gas, A/C, new w/w carpt.  
sec. syst., dec., on site  
prkg., \$570. per mo.  
429-9002

**NUTLEY**  
1g 3 1/2 rm mod garden apt.  
A/C, W/W, dishwasher,  
Avail immed. \$650 incl  
heat  
5 mod rms, 2 fam. house.  
\$750 & heat, incl. parking  
space. Avail. Feb. 1.

**CARL A. ORECHIO**  
**AGENCY**  
667-7733  
Eves: Mario 667-8189

**NUTLEY DUPLEX, 7**  
rooms, 1 1/2 bath, close to  
NY trans. \$890 plus utilities.  
284-1049.

Nutley, 4 lg. room apt,  
washer-dryer, w/w carpet,  
absolutely gorgeous. \$895  
mo. + util. Avail. immed.  
No pets. 661-1615 after 6,  
Mike.

**GLEN RIDGE**  
2 BR, 2 Bath  
Mod. elev. bldg., F.I.K. H/  
HW, gas, A/C, w/w carpt.  
D/W, sec. sys., laundry rm.  
dec. on site pkg., buses  
curbside. \$850 per mo.  
429-9002

**NUTLEY**  
6 rms, \$730 & util.  
**BELLEVILLE**  
3 1/2 rm garden, \$619 h/w  
& gas incl.

4 rms, 2 bdrms, \$625 & util.  
5 rms, \$675 & util.  
**BLOOMFIELD**  
Studio, \$500 & util.  
Whole house, \$1300 & util.  
**NO. ARLINGTON**  
2 1/2 rms, 2 yr old home,  
\$650 all util incl.  
3 rms, 8 yr old home,  
\$685 all util incl.

**James Vincent  
Associates**  
Realtor 939-7070

**NUTLEY**  
3 rm mod garden. All appl.  
incl. \$570 h&h/w incl.  
7 rm mod contemporary  
apt (loft-2 floor-s), singles &  
children welcome. \$800 &  
util.

**BELLEVILLE**  
3 1/2 rm mod apt, 2nd fl.  
\$500 & util.  
3 1/2 rm mod garden, W/W,  
refrig incl. \$560 hot water  
incl.

**MONTELL AGENCY**  
759-6900

**BLOOMFIELD: 7 1/2**  
large ultra mod rooms  
with w/w carpeting, heat  
& hot water supplied.  
Laundry facilities on  
premises. Parking space.  
Adults pref.  
Call 743-8886 21188

**FOREST HILL  
AREA  
(Newark)  
Studios.**

1 BR's, 2 BR's  
We are now accepting applications in luxury apts for modern 16 story apt buildings located in beautiful Forest Hill section of Nwk. Rent control well maintained spectacular views off St. assigned pkg. laundry facilities on premises. C/A, w/all utils included in rent. Convenient bus transportation to mid town NYC Approx. 10 mins to Holland Tunnel. Call Leona-Russomanno at area 201-482-5556 or Eleanor Puciarello at 201-483-1616 hrs 8:30 to 4:30.

**43A7 APARTMENTS  
UNFURNISHED**

**NUTLEY**  
4 rms, avail 2/15, \$650 incl.  
h/w & parking.

4 rms, avail immed. \$650  
incl. all util & parking.

Custom lg 4 rm apt. avail  
immed. \$895 & util.

1 bdrm, avail immed. \$695  
incl. util.

Mod 1 bdrm garden apt.  
avail 3-1, \$630 & util.

4 rms, avail immed. \$625  
incl. util.

**SAGE  
REALTORS**  
284-1666

**BLOOMFIELD - 1 BR**  
apt, immed occupancy.  
Call betw. 9 - 12 p.m.  
748-5858 ask for Terry.

**BLOOMFIELD - 3 rms**  
for rent. 2nd fl. \$450. Plus  
utils. Call 624-5315  
betw 2 & 8 p.m.

**BELLEVILLE: 3 rm apt in**  
2 family house. \$550 heat  
& hot water incl.  
Call 450-1068.

**NUTLEY - Furnished in**  
priv. home. Prof. female  
pref. non-smoker.  
\$65 per wk. 661-2263

Apts. 4 Rent  
3 room apt., Nutley, 2nd fl.  
\$550. H/HW incl.  
5 room apt., Belleville, 1st  
fl. \$650. H/HW incl.  
5 room apt., Belleville, 1st  
fl., \$650 supply own utilities.  
Children O.K.  
**CENTURY 21  
Homes R Us**  
751-8800

**BLOOMFIELD: 3 1/2 rm**  
mod apt. \$590. Ht & h/w  
incl. Avail immed.  
Call 226-7826.

**BELLEVILLE**  
4 lg rms, \$650 & util.  
2 fam house, 2nd fl. occup.  
off-street parking for 1 car.  
Avail. May 1.  
5 1/2 rms, 2nd fl., \$650 & util  
w/1 car gar. Avail. Feb. 1.  
**NO. ARLINGTON**  
1 bdrm eff. apt. \$600 incl.  
all util. Avail. Feb. 1  
Stanley or Marie Evans:  
**HANCOX REALTY**  
667-9115

**BLOOMFIELD**  
1 BR, Fairway Gardens,  
\$580 w/ht.  
5 rms, St. Val's (2 BR).  
\$650 w/ht. Vacant.  
2 1/2 rms, mod. carp. \$525  
pays ht - util. Vacant.  
Studio. Mod. kit & bath,  
Furn. W/W carp. \$450  
pays all.  
5 rms, newer 2 fam. ultra  
mod. kit & bath, 2 bdrms,  
vacant. \$725 & util.  
2 bdrm garden. Liv rm,  
din rm. Mod. \$750 incl  
h/w & gas. Vacant.

**BELLEVILLE**  
3 1/2 rms, mod. W/W. Vacant.  
\$512 w/ht.  
4 rms, new paint, new  
w/w. Small child O.K.  
\$700 w/ht.

**GLENWOOD**  
Real Estate Agency  
429-7380  
905 BROAD ST.  
BLOOMFIELD

**BLOOMFIELD, 3 large**  
modernized rooms, in well-  
kept apt. bldg., NY bus  
passes door, heat supplied.  
\$615 call Susan 429-8444

**43C7 COMMERCIAL/  
BUSINESS RENTALS**

Store for rent, Belleville.  
2500 sq. ft. Washington  
Ave. Commercial area.  
Avail. immed. 998-9465

**BELLEVILLE GARAGE**  
450 sq. ft. \$375 + util.

**BLOOMFIELD**  
2 store fronts. 1300 sq. ft.  
\$900 per month or \$475  
each.

**COSTANTINE  
REALTY**  
Realtor 667-7070

**43G2  
GARAGE FOR RENT**

**GARAGE FOR RENT.**  
Electric power, elect.  
garage door opener, call  
667-8300 betw. 8:30 - 5.

**4305  
OFFICE RENTALS**

**BELLEVILLE - 1100 sq ft.**  
prime location at \$9 per sq  
ft. Available immediately.  
Perfect for accountant,  
lawyer, doctor, etc.  
Storage incl. Call 751-5592

**43R7 RESIDENTIAL  
RENTALS WANTED**

**LANDLORDS  
APARTMENTS  
WANTED. EXCELLENT  
PROSPECTIVE  
TENANTS. NO FEE TO  
LANDLORD.**  
**SAGE  
REALTORS**  
590 Franklin Ave.  
Nutley  
284-1666

# Showcase OF FINE HOMES

**JUST LISTED IN BROOKDALE**

**Immaculate Center Entrance Colonial  
OFFERED AT \$195,000**

Living room with fireplace, formal dining room, modern eat-in-kitchen, family room and half bath on first. 3 bedrooms and modern bath on second. 2 car garage. Near Oakview School and New York buses.

**ALSO IN NUTLEY**

**NOW OFFERED AT \$179,000**

7 room Colonial includes living room with fireplace, large dining room plus TV room. Close to schools and all buses.

**EVERYONE KNOWS**

**GEORGE T. BOWES**  
**YOUR NUTLEY REALTOR SINCE 1933**  
**681 FRANKLIN AVE. NUTLEY 667-3376**

**Montclair/Vicinity****OPEN HOUSE**

**SUN., JAN. 24, 1:00 - 4:00 P.M.**

**1283 Valley Rd., Clifton**

**VALLEY ESTATES - WHY RENT WHEN  
YOU CAN OWN** a Condominium from \$115,500?  
Ideal location with Upper Montclair address and  
Clifton taxes, an acre of common land, pool, garage  
& outdoor parking **PLUS MUCH MORE!**  
**REDUCED FOR QUICK SALE!** Call immediately  
for an appointment.



**SCHULTZ  
REAL ESTATE**

50 Church Street  
Montclair, N.J. 783-5058

The Travelers  
Realty Network



ONE YEAR  
WARRANTY

Multiple Listing Broker Members of Montclair Board of REALTORS,  
Board of REALTORS of Bloomfield, Glen Ridge, Nutley and Belleville  
and West Essex Board of REALTORS

## OBC TV Channel 36!

**43R9 ROOMS**

**NUTLEY  
FURNISHED  
ROOMS  
IN RESTORED  
VICTORIAN  
HOUSE**  
\$65-\$85 PER WEEK  
**GARDEN STATE  
INVESTMENTS**  
661-0156 11-9-88

Beautiful furnished sleeping  
rooms in priv. home.  
Female busn. girl preferred.  
Greylock area, Belleville.  
Call 759-7024.

**BLOOMFIELD**  
Newly redecored. Kit  
privileges. Near  
bus/train. \$60 per week.

**GLENWOOD**  
Real Estate Agency  
429-7380  
905 BROAD ST.  
BLOOMFIELD

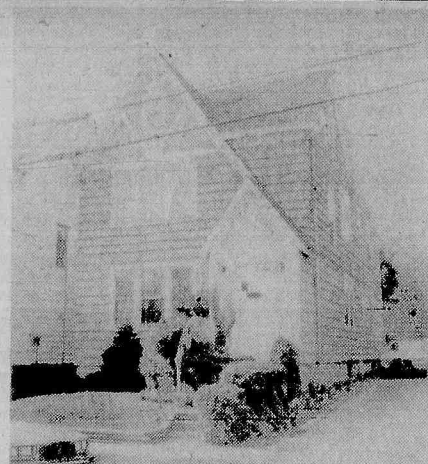
Nutley, furn room for  
rent \$90 week. 667-0571

**43V5  
VACATION RENTALS**

**THINK SUMMER!** Call  
today for your free summer  
rental guide and preview  
rental properties without  
leaving home. Reserve early!  
The VanDyk Group /  
realtor 1-609-492-1511.

Attention Vacationers  
(L.B.) Reserve your place  
in the summer sun now.  
Large selection of properties  
available. Call Cold-  
well Banker/Sand Dollar  
Real Estate. 1-609-492-  
0990.

## Century 21 WAYNE K. THOMAS REALTORS



**2 FAMILY BLOOMFIELD \$207,000**  
**MOVE RIGHT INTO THIS SPACIOUS 5 & 5 BEAUTY.**  
**NICE RES. STREET & CONV. LOCATION.**  
**MAKE AN APT. TODAY - MICKEY 743-4017**

**277 Broad Street Bloomfield, New Jersey**  
**(201) 429-7400**

Each office independently owned and operated  
**MEMBER OF BLOOMFIELD GLEN RIDGE  
NUTLEY, BELLEVILLE BOARD OF REALTORS**

For Your Hometown Newspapers

**Call 667-2100**

The Nutley Sun Belleville Times  
Bloomfield Life



## VALENTINE'S DAY is just around the corner!

To celebrate this joyous occasion The Nutley Sun's, Belleville Times' and Bloomfield Life's Classified Department will be publishing its special page...

**CUPID'S CHOICE**

For a very low rate your ad can reach your best prospects...the readership with one of the highest degrees of purchasing power and discretionary income in Essex County...The Nutley Sun, Belleville Times and Bloomfield Life readers.

Classified special pages offer you concentrated local coverage because Classified is a people's market.

Take advantage of our very special Valentine's Day rate — Space is limited — reach the readership that CAN AND DOES BUY!

Publication dates

February 4, 1988

February 11, 1988

Deadlines

January 29, 1988

February 5, 1988

Rate — \$4.00 per column inch, per insertion

Call today

**667-3000**



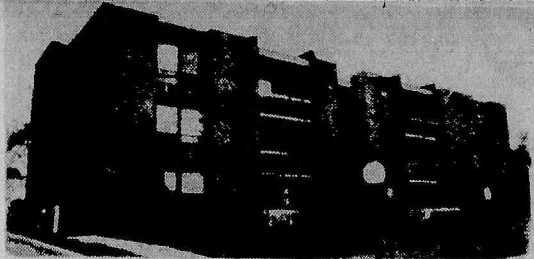
# Showcase OF FINE HOMES

180 Centre St.  
Nutley, N.J. 07110  
667-3440

## GEORGE E. MACMUNN CO.

REALTORS

100 Woodport Road  
Sparta, N.J. 07871  
729-8727



**GREEN KNOLLS — NUTLEY** — two beautiful condo's to preview, 2 & 3 BR's, 1½ & 2 baths, pool priv., like new cond., maint. fee of \$207, incl's heat & condo fees. Priced from \$152,900. to \$169,900.



**ASKING \$189,900. & OFFERS CONSIDERED.** Brookdale-Bloomfield — Dead-end St., immac. home in excellent cond., frpl. in Liv. Rm., lg. Din. Rm., eat-in-kit., extra lg. Florida Rm., 3 nice BR's, landscaped property. **WHAT A BUY!**

**DO YOU KNOW  
WHAT YOUR  
HOUSE IS  
WORTH  
TODAY?**

We offer a current market  
Value analysis...  
Just pick up the phone & call

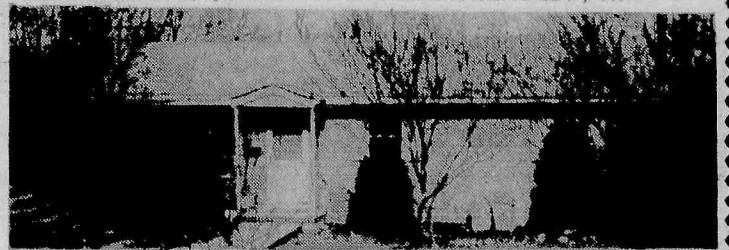
Look for this Emblem.



REALTOR



**LAKE MOHAWK — JUST LISTED** — stunning 1½ yrs old w/50 mi. panoramic views on over 1 acre. Custom built features 3 huge BR's, MBR w/private bath & deck, frpl in LR, formal DR, gorgeous kit w/Jennaire, imported Italian tile, spacious Fam. Rm. w/deck. **ASKING \$249,900.**



**LAKE MOHAWK — SUPER RANCH** main level features 6 rms., lower level has 28x21 fam. rm. w/woodstove, add'l guest rm. & perfect play rm for children, on almost ½ acre w/views. **ASKING \$178,000.**

## HOMES Century 21 HOMES

### "1 FAMILY"

Young Belleville Ranch in excellent move-in condition. Features 3 bedrooms, mod. E.I.K., spacious living room, plus a finished basement w/kit, central A/C. Asking only \$169,900.

### NUTLEY STARTER

This 3 bedroom Colonial has a new kitchen, 1½ baths, finished basement w/kit & laundry. Alum. exterior, 1 det. garage, walk to Lincoln School. Low int. rate to qualified buyer. Asking \$175,900.

### "3 FAMILY"

Just Listed - Belleville - 6 - 6 & 6 room apts. w/3 bedrooms in each, separate furnaces and utilities, 3 car garage, very good condition and location. Asking only \$289,900. Low interest rate available to qualified buyer.

### "2 FAMILY"

Bloomfield Victorian w/loads of character — 4 over 4 spacious room apts. plus a full attic on an oversized 60 x 232 lot, plus 3 garages. Owner must sell. Reduced to \$199,900.

**Century 21 Homes R Us 751-8800**

549 Washington Avenue, Belleville  
Independently owned and operated.



Get ready to sit by a crackling fire, in this spacious colonial. Features large living room with fireplace with chestnut trim bookcases, modern kitchen, sun porch, three bedrooms, 1½ baths, chestnut trim through-out.



**Put Number 1  
to work for you.**

**FIRST  
CENTURY  
REAL ESTATE**

684 Passaic Avenue  
Nutley, New Jersey 07110

235-0440



EACH OFFICE IS INDEPENDENTLY OWNED AND OPERATED

## The Home Front

By Nina Kaeser



### Did You Know??

An increasing number of communities now require fire sprinklers in new residential construction and more are expected to follow. Sprinklers are said to save more lives than smoke alarms do — and save fire-fighting dollars, too. Some insurers offer discounts for them.

\* \* \*

To protect floors when staining doors and baseboards, lay freezer paper with the waxed side down, with a layer of newspapers on top. Stain will be absorbed, but won't leak through.

\* \* \*

Don't discard the potted tulips and daffodils you forced indoors this winter. Save them to transplant into your garden.

\* \* \*

Possible cure for squaky stairs: polyurethane foam applied between loose treads and risers. It comes in a pressure can with special tubing to "aim" the foam. Follow directions carefully; it's tricky to use.

\* \* \*

Even though mortgage rates went up, builders report that plenty of first-time buyers are in the market for homes. Most of them choose adjustable rate mortgages.

\* \* \*

Lots of first-time buyers come to us to find a home. Shouldn't they see YOUR house? List with Century 21 Stanford Agency, 86 Union Avenue, Nutley, 235-9000.

**Apartment For Rent**  
Nutley 2 bedroom, ultra modern, 2½ baths, secluded in park with common terrace; NY bus convenience; \$1250 per month plus heating. 667-1024 days.



### VALUE FOR THE MONEY

**BELLEVILLE** — This attractive Colonial featuring Living Room, Dining Room, modern eat-in Kitchen, 3 Bedrooms, 2 Baths, and a 2-car detached Garage offers maintenance free living for the family on the go. Located on a tree-lined street bordering Nutley, yet close to N.Y. bus, school and shopping. This home is truly an excellent buy. \$179,500.



### INCOME PRODUCING 2 FAMILY

**PASSAIC** — This mint condition 2 family contains 2 spacious, modern, elegantly updated apartments. Why pay rent — own your own 2 family and collect the rent. Separate electric and heat systems, track lighting, custom oak cabinets, ceiling fans, new furnaces (2) and new H/W heater. C/A/C on 2nd floor only. Super move-in condition — many extras. \$158,000.



### YES YOU CAN

**NEWARK** — Afford to buy this charming, comfortable 3½ bedroom, formal dining room, new redwood back porch and newly decorated bath room. Fenced in yard for children or pets. Convenient to N.Y. train or bus. Come take a look. \$80,000.



Expect the Best.

**REGENCY  
PLAZA**  
555 Passaic Ave.  
West Caldwell



## Century 21 Stanford Agency

**Cream Puff**  
You'll love to call this 2 bedroom raised ranch home. This cozy ranch features a modern galley kitchen and many extras. Belleville - Priced in \$160,000's.

**Turn of Century**  
This 7 bdrm victorian offers all the charm of yesteryear, feats restored nat-trim, pocket drs and all of the feats of a turn of the century home. Call for an apt to preview the charm of the past. Belleville - Priced in \$20,000's.

**Super Size**  
Charming 4 bedroom colonial offers comfortable flow of rooms and space. Great purchase for those who enjoy gracious living. Belleville - Priced in \$150,000's.

**NUTLEY PARK LUXURY CONDO'S**  
Limited number of distinctive 1 bedroom luxury condo's. Features include colonial style brick exterior, elevators, individual C/A, separate heating units, prewired phone and cable TV, high quality carpeting, thermopane windows. The Chestnut Place Condominiums are located in the historic section of Nutley, N.J., and are convenient to New York City and all major highways.

**Appealing**  
This 3 bedroom home glows with warmth and comfort, and the interior features a living rm, dining rm and a center hall. A real value. Belleville - Priced in \$160,000's.

**Nutley Park Area**  
This 3 bedroom colonial is located in a prime area, offers formal dining room, and all of the extra features that spell "Home". Nutley - Priced in \$190,000's.

**OPEN HOUSE**  
92 Joerg Avenue  
1:4 p.m.  
Sunday, 1-24-88  
This 4 bedroom split is perfect for the large family. Stop by and preview.

**Luxury**  
This 3 bdrm town house feats a novel kit, esp designed for mod conveniences and offers maint free living. This home will not last, call for an appointment to preview. Clifton - Priced in low \$200,000's.

**Century 21  
STANFORD AGENCY**

86 Union Ave.  
Nutley, N.J.  
**235-9000**

EACH OFFICE INDEPENDENTLY OWNED AND OPERATED

**DON'T MISS OUT —  
SPACE IS LIMITED**

**The Nutley Sun  
Belleville Times  
Bloomfield Life**

Your Hometown Newspapers

**Call 667-2100**



# ShopRite Does It RIGHT 2ND Big Week!



# CAN CAN '88

**Corn**

1 lb. cans

**4.99**

REGULAR OR NATURAL

**ShopRite Applesauce**

1-lb. cans

**3.99**

ALL VARS., DISTINCTIVE DINNER OR REG.

**Alpo Dog Food**

14-oz. cans

**3.100**

CUTS AND TIPS

**ShopRite Asparagus**

15-oz. can

**.69**

IN OIL OR WATER CHUNK

**Bumble Bee Light Tuna**

6 1/2-oz. cans

**3.199**

WHY PAY MORE™

**Ajax Cleanser**

14-oz. cans

**.99**

NEW ENGLAND OR MANHATTAN, MARINERS COVE

**Clam Chowder**

15-oz. can

**.59**

REG. OR NO SALT, CUT OR FRENCH STYLE

**ShopRite Green Beans**

15 1/2-oz. cans

**.89**

ShopRite

**Corned Beef**

12-oz. can

**.99**

RED KIDNEY, PINK, SMALL PINTO, WHITE, CANNELLINI BEANS OR

**ShopRite Chick Peas**

1-lb. cans

**.99**

SOLID PACK WHITE, IN OIL OR WATER

**Chicken of the Sea Tuna**

6 1/2-oz. can

**1.19**

**Grand Opening**  
Super ShopRite of  
**Front & Olney**  
THE ONE & OLNEY SQUARE  
101 E. OLNEY AVE.  
PHILADELPHIA, PA.

**Friskies Cat Food**

6-oz. cans

**5.99**

ALL VARIETIES

**Hearts Delight Nectars**

1-qt. 14 oz. can

**.69**

REG. OR NO SALT

**Green Giant Niblet Corn**

12-oz. cans

**3.100**

ShopRite

**Chicken Broth**

13 3/4-oz. cans

**4.99**

DARK OR LT. RED

**ShopRite Kidney Beans**

15-oz. cans

**4.99**

COFFEE

**Chase & Sanborn**

11 1/2-oz. can

**1.19**

CHERRY, APPLE OR BLUEBERRY PIE

**Comstock Filling**

1-lb. 5 oz. can

**.88**

ALL VARIETIES, IN JUICE OR SYRUP BUFFET

**Dole Pineapple**

8-oz. cans

**1.00**

ALL VARIETIES, RTS

**Duncan Hines Frostings**

1-lb. 1/2 oz. can

**.99**

FRANCO AMERICAN

**Spaghettios**

15-oz. cans

**1.00**

HUNT'S

**Tomato Sauce**

15-oz. cans

**1.00**

**Tomato Sauce**

15-oz. cans

**4.99**

WHY PAY MORE™

**ShopRite Pork & Beans**

1-lb. cans

**4.99**

CHICKEN NOODLE

**Campbell's Soup**

10 3/4-oz. cans

**3.100**

PLAIN OR FLAVORED

**4-C Bread Crumbs**

1-lb. 8 oz. can

**.89**

REG. OR CAFFEINE FREE, REG. OR DIET

**Coke, Tab or Sprite**

6-pack 12-oz. cans

**2.300**

PIECES & STEMS, REGULAR

**ShopRite Mushrooms**

4-oz. cans

**1.00**

20-QT. ShopRite

**Iced Tea Mix**

4-lb. can

**2.99**

REG. OR ITALIAN STYLE, CONTADINA

**Tomato Paste**

4-oz. cans

**.99**

INSTANT

**Idahoan Potatoes**

2-lb. canister

**1.49**

ShopRite

**Tomato Paste**

5-oz. cans

**.99**

TOMATO SPAGHETTI

**Pomi Sauce**

1-pt. 1 oz. boxes

**.99**

**Shasta Soda**

12-oz. cans

**8.100**

ALL VARIETIES, REG. OR DIET

REG. OR ITALIAN STYLE, WHOLE PEELED

**Hunt's Tomatoes**

14 1/2-oz. cans

**3.100**

ShopRite

**Tomato Soup**

10 3/4-oz. cans

**5.99**

WHY PAY MORE™

**ShopRite Sauerkraut**

1-lb. cans

**4.99**

ALL VARIETIES

**Hi-C Fruit Drinks**

1-qt. 14 oz. can

**.59**

COMO PUREE OR CRUSHED OR CRUSHED, PUREE OR WHOLE PEELED

**Tutorosso Tomatoes**

1-lb. 12 oz. can

**.49**

CREAMY

**Skippy Peanut Butter**

5-lb. pail

**5.99**

REG. OR PLUS, SACRAMENTO

**Tomato Juice**

1-qt. 14 oz. can

**.69**

REG. OR 25% LESS SALT, SPAM

**Luncheon Meat**

12-oz. can

**1.39**

CREAM OF MUSHROOM, CHICKEN NOODLE, REG. VEG. OR VEGETARIAN VEGETABLE

**ShopRite Soup**

4 10 3/4-oz. cans

**.99**

ITALIAN

**Progresso Zucchini**

1-lb. can

**.79**

## The MEATing® Place

**Beef Shoulder London Broil**

1 lb.

**1.99**

WITH POCKET FOR STUFFING

**Breast of Veal**

1 lb.

**1.19**

CENTER CUT, WATER ADDED

**Smoked Ham Steak**

1 lb.

**2.99**

HOLLY FARMS, WHOLE WITH THIGHS

**Chicken Legs**

1 lb.

**.99**

## The Appy Place

**Swiss Cheese**

1 lb.

**2.24**

**ShopRite Coupon**

WITH THIS COUPON

**.50 OFF**

TOWARD THE PURCHASE OF ANY SIZE PKG. OF BONE-IN WATER ADDED

**Smoked Ham Steak**

Coupon good at any ShopRite market. Limit one per family. Effective Sun., Jan. 17 thru Sat., Jan. 23, 1988.

**SAVE .50**

**ShopRite Coupon**

WITH THIS COUPON

**.20 OFF**

TOWARD THE PURCHASE OF ONE (1) 8-OZ. PKG. ALL VARIETIES, SWIFT'S

**Brown & Serve Sausages**

Coupon good at any ShopRite market. Limit one per family. Effective Sun., Jan. 17 thru Sat., Jan. 23, 1988.

**SAVE .20**

**Fresh Whole Pork Butt**

1 lb.

**1.19**

FOR ROAST, BONE-IN

**Boneless Shoulder Steak**

1 lb.

**1.99**

3-LBS. OR MORE, U.S.D.A. CHOICE BEEF

**Split Chicken Breast**

1 lb.

**1.69**

QUAKER MAID FROZEN

**Sandwich Steaks**

32-oz. pkg.

**3.39**

## The Dairy Place

**100% PURE ShopRite Premium Orange Juice**

1/2-gal. cart.

**1.59**

**Cottage Cheese**

1-lb. cont.

**.99**

## The Bakery Place

**COUNTRY HEARTH, PKG OF 8**

**Hamburger or Frank Rolls**

10-oz. pkg.

**.44**

**ShopRite Rye Cuts**

16-oz. loaf

**.69**

**ShopRite Coupon**

WITH THIS COUPON

**2.99**

ASST. VAR. 1-LB. LOAF

**ShopRite Rye Cuts**

Coupon good at any ShopRite Market. Limit one per family. Effective Sun., Jan. 17 thru Sat., Jan. 23, 1988.

**SAVE .39**

## The Produce Place

**Fresh Mushrooms**

12-oz. pkg.

**.99**

ALL NATURAL

**Florida Grapefruit**

4 for

**.99**

40 SIZE WHITE

**Red Delicious Apples**

3-lb. bag

**1.39**

IMPORTED FROM CHILE, RED FLAME

**Seedless Grapes**

1-lb.

**1.49**

## The Deli Place

**WILSON Meat Franks**

1-lb. pkg.

**.69**

**Three Kings Bacon**

1-lb. pkg.

**1.59**

## The Frozen Food Place

**ShopRite GRADE 'A' Broccoli Spears**

10-oz. pkg.

**.37**

**Louis Sherry Ice Cream**

1/2-gal. cart.

**1.99**

**ShopRite Coupon**

WITH THIS COUPON

**.79**

ONE (1) 5 1/2-OZ. BAG ALL VARS. EXCEPT RUFFLES

**Frito Lay Potato Chips**

Coupon good at any ShopRite Market. Limit one per family. Effective Sun., Jan. 17 thru Sat., Jan. 23, 1988.

**SAVE .20**

**Idaho Potatoes**

5-lb. bag

**.99**

U.S. #1 GENUINE

**Firm Ripe Tomatoes**

1 lb.

**.79**

CRISP 30 SIZE

**Fresh Celery**

bch.

**.69**

FRESH & TENDER CALIF.

**Broccoli Rabe**

1-lb.

**.99**

## Fresh Fish Market

**U.S. GRADE 'A' NORTH ATLANTIC Fresh Fillet of Ocean Pout\***

1 lb.

**2.49**

**Medium Shrimp**

1 lb.

**4.99**

## General Merchandise

**Kodak Video Tape**

each

**3.99**

## Health & Beauty Aids

**Salon Selectives**

your choice

**1.59**

**ShopRite Coupon**

WITH THIS COUPON

**.29**

ONE (1) 12-OZ. BOX MEDIUM OR WIDE

**Mueller's Egg Noodles**

Coupon good at any ShopRite Market. Limit one per family. Effective Sun., Jan. 17 thru Sat., Jan. 23, 1988.

**SAVE .40**

In order to assure a sufficient supply of sales items for all our customers, we must reserve the right to limit the purchase to units of 4 of any sales items, except where otherwise noted. Not responsible for typographical errors. Prices effective Sun., Jan. 17 thru Sat., Jan. 23, 1988. None sold to other retailers or wholesalers. Artwork does not necessarily represent item on sale, it is for display purposes only. Sunday sales subject to local blue laws. Copyright WAKEFERN FOOD CORPORATION 1988.